



SZABO SCANDIC

Part of Europa Biosite

Produktinformation



Forschungsprodukte & Biochemikalien



Zellkultur & Verbrauchsmaterial



Diagnostik & molekulare Diagnostik



Laborgeräte & Service

Weitere Information auf den folgenden Seiten!
See the following pages for more information!



Lieferung & Zahlungsart

siehe unsere [Liefer- und Versandbedingungen](#)

Zuschläge

- Mindermengenzuschlag
- Trockeneiszuschlag
- Gefahrgutzuschlag
- Expressversand

SZABO-SCANDIC HandelsgmbH

Quellenstraße 110, A-1100 Wien

T. +43(0)1 489 3961-0

F. +43(0)1 489 3961-7

mail@szabo-scandic.com

www.szabo-scandic.com

[linkedin.com/company/szaboscandic](https://www.linkedin.com/company/szaboscandic) 

TOM1L1 293T Cell Transient Overexpression Lysate(Denatured)

Catalog # : H00010040-T01

規格 : [100 uL]

[List All](#)

Specification

Transfected Cell Line: 293T

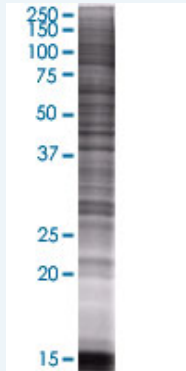
Plasmid: pCMV-TOM1L1 full-length

Host: Human

Theoretical MW (kDa): 38.17

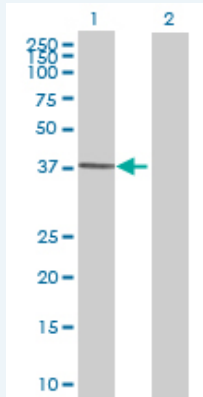
Quality Control Testing: Transient overexpression cell lysate was tested with Anti-TOM1L1 antibody ([H00010040-B01](#)) by Western Blots.

SDS-PAGE Gel



TOM1L1 transfected lysate.

Western Blot



Lane 1: TOM1L1 transfected lysate (38.17 KDa)

Lane 2: Non-transfected lysate.

Storage Buffer: 1X Sample Buffer (50 mM Tris-HCl, 2% SDS, 10% glycerol, 300 mM 2-mercaptoethanol, 0.01% Bromophenol blue)

Storage Instruction: Store at -80°C. Aliquot to avoid repeated freezing and thawing.

MSDS:  [Download](#)

Applications

Western Blot

Gene Information

Entrez GeneID: [10040](#)

**GeneBank
Accession#:** [BC029396.1](#)

**Protein
Accession#:** [AAH29396.1](#)

Gene Name: TOM1L1

Gene Alias: OK/KNS-CL.3, SRCASM

**Gene
Description:** target of myb1 (chicken)-like 1

Omim ID: [604701](#)

Gene Ontology: [Hyperlink](#)

**Other
Designations:** Src activating and signaling molecule, target of myb 1-like 1, target of myb1-like 1

[服務條款](#) | [隱私權政策](#) | [著作及商標](#) | [網站地圖](#)

©2016 亞諾法生技股份有限公司 Abnova Corporation. 版權所有.