



SZABO SCANDIC

Part of Europa Biosite

Produktinformation



Forschungsprodukte & Biochemikalien



Zellkultur & Verbrauchsmaterial



Diagnostik & molekulare Diagnostik



Laborgeräte & Service

Weitere Information auf den folgenden Seiten!
See the following pages for more information!



Lieferung & Zahlungsart

siehe unsere [Liefer- und Versandbedingungen](#)

Zuschläge

- Mindermengenzuschlag
- Trockeneiszuschlag
- Gefahrgutzuschlag
- Expressversand

SZABO-SCANDIC HandelsgmbH

Quellenstraße 110, A-1100 Wien

T. +43(0)1 489 3961-0

F. +43(0)1 489 3961-7

mail@szabo-scandic.com

www.szabo-scandic.com

[linkedin.com/company/szaboscandic](https://www.linkedin.com/company/szaboscandic) 

TOM1 MaxPab mouse polyclonal antibody (B01) MaxPab®

Catalog # : H00010043-B01

規格 : [50 uL]

[List All](#)

Specification

Product Description: Mouse polyclonal antibody raised against a full-length human TOM1 protein.

Immunogen: TOM1 (NP_005479.1, 1 a.a. ~ 492 a.a) full-length human protein.

Sequence:
 MDFLLGNPFSSPVGQRIEKATDGSLQSEDWALNMEICDIINETEEGPKDA
 LRAVKKRIVGNKNFHEVMLALTVLETCVKNCGHRFHVLSAQDFVESLV
 RTILPKNNPPTIVHDKVLNLIQSWADAFRSSPDLTGVVTIYEDLRRKGLEF
 PMTDLDMLSPIHTPQRTVFNSETQSGQDSVGTDSSQQEDSGQHAAPLP
 APPILSGDTPIAPTPEQIGKLRSELEMVSGNVRVMSEMLTELVTQAEP
 DLELLQELNRTCAMQQRVLELIPQIANEQLTEELLIVNDNLNNVFLRHER
 FERFRTGQTTKAPSEAEPAADLIDMGPDPAATGNLSSQLAGMNLGSSSV
 RAGLQSLEASGRLEDEFDMFALTRGSSLADQRKEVKYEAPQATDGLAG
 ALDARQQSTGAIPVTQAQLMEDIEQWLSTDVGNDAEEPKGVTSSEFDKF
 LEERAKAADRLPNLSSPSAEGPPGPPSGPAPRKKTKQEKDDDMFLAL

Host: Mouse

Reactivity: Human

Quality Control Testing: Antibody reactive against mammalian transfected lysate.

Storage Buffer: No additive

Storage Instruction: Store at -20°C or lower. Aliquot to avoid repeated freezing and thawing.

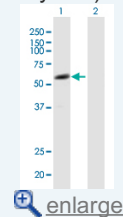
Note: For IHC and IF applications, antibody purification with Protein A will be needed prior to use.

MSDS: [Download](#)

Datasheet: [Download](#)

Application Image

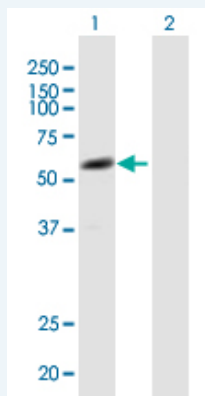
Western Blot (Transfected lysate)



[enlarge](#)

Applications

Western Blot (Transfected lysate)



Western Blot analysis of TOM1 expression in transfected 293T cell line (H00010043-T01) by TOM1 MaxPab polyclonal antibody.

Lane 1: TOM1 transfected lysate(54.12 KDa).
Lane 2: Non-transfected lysate.

 [Protocol Download](#)

Gene Information

Entrez GeneID: [10043](#)

**GeneBank
Accession#:** [NM_005488.1](#)

**Protein
Accession#:** [NP_005479.1](#)

Gene Name: TOM1

Gene Alias: FLJ33404

**Gene
Description:** target of myb1 (chicken)

Omim ID: [604700](#)

Gene Ontology: [Hyperlink](#)

Gene Summary: This gene was identified as a target of the v-myb oncogene. The encoded protein shares its N-terminal domain in common with proteins associated with vesicular trafficking at the endosome. It is recruited to the endosomes by its interaction with endofin. Several alternatively spliced transcript variants encoding different isoforms have been found for this gene. [provided by RefSeq]

**Other
Designations:** OTTHUMP00000028777,target of myb 1,target of myb1

Related Disease

[Bipolar Disorder](#) [Genetic Predisposition to Disease](#) [Schizophrenia](#)

[服務條款](#) | [隱私權政策](#) | [著作及商標](#) | [網站地圖](#)

©2016 亞諾法生技股份有限公司 Abnova Corporation. 版權所有.