



SZABO SCANDIC

Part of Europa Biosite

Produktinformation



Forschungsprodukte & Biochemikalien



Zellkultur & Verbrauchsmaterial



Diagnostik & molekulare Diagnostik



Laborgeräte & Service

Weitere Information auf den folgenden Seiten!
See the following pages for more information!



Lieferung & Zahlungsart

siehe unsere [Liefer- und Versandbedingungen](#)

Zuschläge

- Mindermengenzuschlag
- Trockeneiszuschlag
- Gefahrgutzuschlag
- Expressversand

SZABO-SCANDIC HandelsgmbH

Quellenstraße 110, A-1100 Wien

T. +43(0)1 489 3961-0

F. +43(0)1 489 3961-7

mail@szabo-scandic.com

www.szabo-scandic.com

[linkedin.com/company/szaboscandic](https://www.linkedin.com/company/szaboscandic) 

TOM1 purified MaxPab rabbit polyclonal antibody (D01P) MaxPab®

Catalog # : H00010043-D01P

規格 : [100 ug]

[List All](#)

Specification

Product Description: Rabbit polyclonal antibody raised against a full-length human TOM1 protein.

Immunogen: TOM1 (NP_005479.1, 1 a.a. ~ 492 a.a) full-length human protein.

Sequence:
 MDFLLGNPFSSPVGQRIEKATDGSLQSEDWALNMEICDIINETEEGPKDA
 LRAVKKRIVGNKNFHEVMLALTVLETCVKNCGHRFHVLVASQDFVESVLV
 RTILPKNNPPTIVHDKVLNLIQSWADAFRSSPDLTGVVTIYEDLRRKGLEF
 PMTDLMLSPIHTPQRTVFNSETQSGQDSVGT DSSQQEDSGQHAAPLP
 APPILSGDTPIAPTPEQIGKLRSELEMVSGNVRVMSEMLTEL VPTQAEPA
 DLELLQELNRTC RAMQQRVLELIPQIANEQLTEELLIVNDLNNVFLRHER
 FERFRTGQTTKAPSEAEPAADLIDMGPDPAAATGNLSSQLAGMNLGSSSV
 RAGLQSLEASGRLEDEFDMFALTRGSSLADQRKEVKYEAPQATDGLAG
 ALDARQQSTGAIPVTQA CLMEDIEQWLSTDVGNDAEEP KGV TSEEFDKF
 LEERAKAADRLPNLSSPSAEGPPGPPSGPAPRKKTKQEKDDDMLFAL

Host: Rabbit

Reactivity: Human

Quality Control Testing: Antibody reactive against mammalian transfected lysate.

Storage Buffer: In 1x PBS, pH 7.4

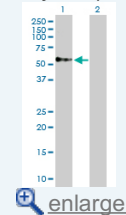
Storage Instruction: Store at -20°C or lower. Aliquot to avoid repeated freezing and thawing.

MSDS: [Download](#)

Datasheet: [Download](#)

Application Image

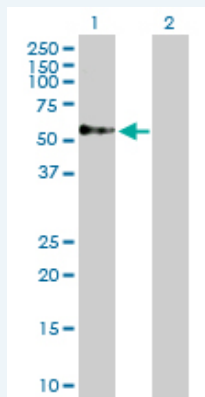
Western Blot (Transfected lysate)



[enlarge](#)

Applications

Western Blot (Transfected lysate)



Western Blot analysis of TOM1 expression in transfected 293T cell line (H00010043-T02) by TOM1 MaxPab polyclonal antibody.

Lane 1: TOM1 transfected lysate(53.80 KDa).

Lane 2: Non-transfected lysate.

Gene Information

Entrez GeneID: [10043](#)

**GeneBank
Accession#:** [NM_005488.1](#)

**Protein
Accession#:** [NP_005479.1](#)

Gene Name: TOM1

Gene Alias: FLJ33404

**Gene
Description:** target of myb1 (chicken)

Omim ID: [604700](#)

Gene Ontology: [Hyperlink](#)

Gene Summary: This gene was identified as a target of the v-myb oncogene. The encoded protein shares its N-terminal domain in common with proteins associated with vesicular trafficking at the endosome. It is recruited to the endosomes by its interaction with endofin. Several alternatively spliced transcript variants encoding different isoforms have been found for this gene. [provided by RefSeq]

**Other
Designations:** OTTHUMP00000028777,target of myb 1,target of myb1

Related Disease

[Bipolar Disorder](#) [Genetic Predisposition to Disease](#) [Schizophrenia](#)