



SZABO SCANDIC

Part of Europa Biosite

Produktinformation



Forschungsprodukte & Biochemikalien



Zellkultur & Verbrauchsmaterial



Diagnostik & molekulare Diagnostik



Laborgeräte & Service

Weitere Information auf den folgenden Seiten!
See the following pages for more information!



Lieferung & Zahlungsart

siehe unsere [Liefer- und Versandbedingungen](#)

Zuschläge

- Mindermengenzuschlag
- Trockeneiszuschlag
- Gefahrgutzuschlag
- Expressversand

SZABO-SCANDIC HandelsgmbH

Quellenstraße 110, A-1100 Wien

T. +43(0)1 489 3961-0

F. +43(0)1 489 3961-7

mail@szabo-scandic.com

www.szabo-scandic.com

[linkedin.com/company/szaboscandic](https://www.linkedin.com/company/szaboscandic) 

TOM1 monoclonal antibody (M01), clone 5A3

Catalog # : H00010043-M01

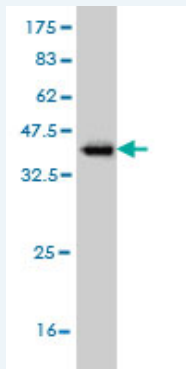
規格 : [100 ug]

[List All](#)

Specification

Product Description:	Mouse monoclonal antibody raised against a partial recombinant TOM1.
Immunogen:	TOM1 (NP_005479, 394 a.a. ~ 491 a.a) partial recombinant protein with GST tag. MW of the GST tag alone is 26 KDa.
Sequence:	GLAGALDARQQSTGAIPVTQAQLMEDIEQWLSTDVGNDAAEEPKGVTS EFDKFLLEERAKAADRLPNLSSPSAEGPPGPPSGPAPRKKKTQEKDDML FA
Host:	Mouse
Reactivity:	Human
Isotype:	IgG1 Kappa

Quality Control Testing: Antibody Reactive Against Recombinant Protein.



Western Blot detection against Immunogen (36.52 KDa) .

Storage Buffer: In 1x PBS, pH 7.4

Storage Instruction: Store at -20°C or lower. Aliquot to avoid repeated freezing and thawing.

MSDS: [Download](#)

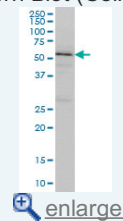
Datasheet: [Download](#)

Applications

Western Blot (Cell lysate)

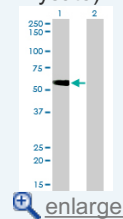
Application Image

Western Blot (Cell lysate)



[enlarge](#)

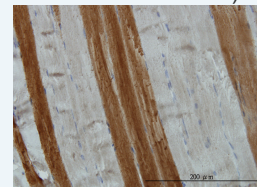
Western Blot (Transfected lysate)



[enlarge](#)

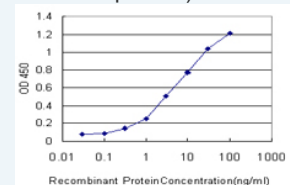
Western Blot (Recombinant protein)

Immunohistochemistry (Formalin/PFA-fixed paraffin-embedded sections)



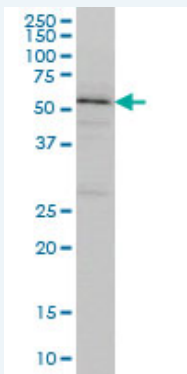
[enlarge](#)

Sandwich ELISA (Recombinant protein)



[enlarge](#)

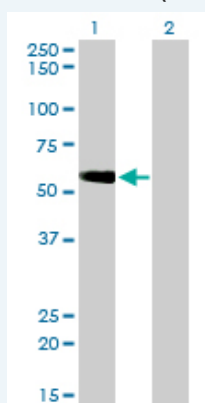
ELISA



TOM1 monoclonal antibody (M01), clone 5A3 Western Blot analysis of TOM1 expression in K-562 (Cat # L009V1).

[Protocol Download](#)

Western Blot (Transfected lysate)



Western Blot analysis of TOM1 expression in transfected 293T cell line by TOM1 monoclonal antibody (M01), clone 5A3.

Lane 1: TOM1 transfected lysate(53.8 KDa).

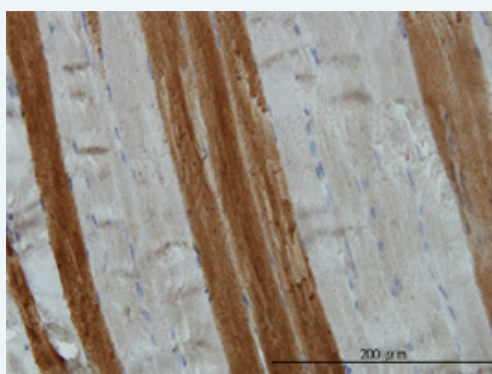
Lane 2: Non-transfected lysate.

[Protocol Download](#)

Western Blot (Recombinant protein)

[Protocol Download](#)

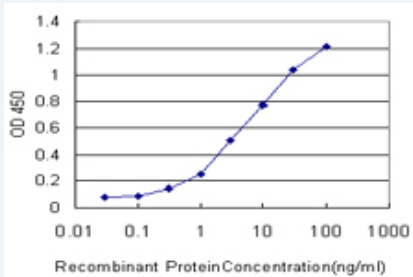
Immunohistochemistry (Formalin/PFA-fixed paraffin-embedded sections)



Immunoperoxidase of monoclonal antibody to TOM1 on formalin-fixed paraffin-embedded human skeletal muscle. [antibody concentration 3 ug/ml]

[Protocol Download](#)

Sandwich ELISA (Recombinant protein)



Detection limit for recombinant GST tagged TOM1 is approximately 0.3ng/ml as a capture antibody.

 [Protocol Download](#)

ELISA

Gene Information

Entrez GeneID: [10043](#)

GeneBank [NM_005488](#)

Accession#:

Protein [NP_005479](#)

Accession#:

Gene Name: TOM1

Gene Alias: FLJ33404

Gene Description: target of myb1 (chicken)

Omim ID: [604700](#)

Gene Ontology: [Hyperlink](#)

Gene Summary: This gene was identified as a target of the v-myb oncogene. The encoded protein shares its N-terminal domain in common with proteins associated with vesicular trafficking at the endosome. It is recruited to the endosomes by its interaction with endofin. Several alternatively spliced transcript variants encoding different isoforms have been found for this gene. [provided by RefSeq]

Other Designations: OTTHUMP00000028777, target of myb 1, target of myb1

Related Disease

[Bipolar Disorder](#) [Genetic Predisposition to Disease](#) [Schizophrenia](#)