



# SZABO SCANDIC

Part of Europa Biosite

## Produktinformation



Forschungsprodukte & Biochemikalien



Zellkultur & Verbrauchsmaterial



Diagnostik & molekulare Diagnostik



Laborgeräte & Service

Weitere Information auf den folgenden Seiten!  
See the following pages for more information!



### Lieferung & Zahlungsart

siehe unsere [Liefer- und Versandbedingungen](#)

### Zuschläge

- Mindermengenzuschlag
- Trockeneiszuschlag
- Gefahrgutzuschlag
- Expressversand

### SZABO-SCANDIC HandelsgmbH

Quellenstraße 110, A-1100 Wien

T. +43(0)1 489 3961-0

F. +43(0)1 489 3961-7

[mail@szabo-scandic.com](mailto:mail@szabo-scandic.com)

[www.szabo-scandic.com](http://www.szabo-scandic.com)

[linkedin.com/company/szaboscandic](https://www.linkedin.com/company/szaboscandic) 

## SH2D3C MaxPab mouse polyclonal antibody (B01) MaxPab®

Catalog # : H00010044-B01

規格 : [ 50 uL ]

[List All](#)

### Specification

**Product Description:** Mouse polyclonal antibody raised against a full-length human SH2D3C protein.

**Immunogen:** SH2D3C (AAH27962, 1 a.a. ~ 703 a.a) full-length human protein.

**Sequence:**  
 MTAVGRRCPALGSRGAAGEPEAGSDYVKFSKEYILDSSPEKLHKELEE  
 ELKLSSTDLRSHAWYHGRIPREVSETLVQRNGDFLIRDLSLGDYVLT  
 RWRNQALHFKINKVVKAGESYTHIQYLFEQESFDHVPALVRYHVGSRKA  
 VSEQSGAIYCPVNRTFPLRYLEASYGLGQGSKPASPVSPSPGKGSIM  
 KRRSVTMTDGLTADKVTRSDGCPTSTSLPRPRDSIRSCALSMDQIPDLH  
 SPMSPISESPSPAYSTVTRVHAAPAAPSATALPASPVARRSSEPQLCPG  
 SAPKTHGESDKGPHTSPSHTLGKASPSLSYSDPDSGHYCQLQPPV  
 RGSREWAATETSSQQARSYGERLKELSENGAPEGDWGKFTVPIVEVT  
 SSFNPAFQSLIPRDNRPLEVGLLRKVKELLAEVDARTLARHVTKVDC  
 VARILGVTKEMQTLMGVWRGMELLTLPHGRQLRLDLLERFHTMSIMLAV  
 DILGCTGSAEERAALLHKTIQAAELRGTMGNMFSFAAVMGALDMAQISR  
 LEQTWVTLRQRHTEGAILYEKKLKPFLLKSLNEGKEGPPLSNTTFPHVPLI  
 TLLECD SAPPEGPEPWGSTEHGVEVLAHLEAARTVAHHGGLYHTNAEV  
 KLQGFQARPELLEVFSTEFQMRLLWGSQGASSSQARRYEKFDKVLTA  
 LSHKLEPAVRSESEL

**Host:** Mouse

**Reactivity:** Human

**Quality Control Testing:** Antibody reactive against mammalian transfected lysate.

**Storage Buffer:** No additive

**Storage Instruction:** Store at -20°C or lower. Aliquot to avoid repeated freezing and thawing.

**Note:** For IHC and IF applications, antibody purification with Protein A will be needed prior to use.

**MSDS:**  [Download](#)

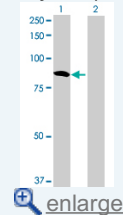
**Datasheet:**  [Download](#)


### Applications

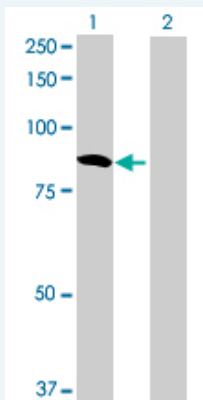
**Western Blot (Transfected lysate)**

### Application Image

Western Blot (Transfected lysate)




 [enlarge](#)



Western Blot analysis of SH2D3C expression in transfected 293T cell line ([H00010044-T01](#)) by SH2D3C MaxPab polyclonal antibody.

Lane 1: SH2D3C transfected lysate(77.33 KDa).  
Lane 2: Non-transfected lysate.

 [Protocol Download](#)

### Gene Information

**Entrez GeneID:** [10044](#)

**GeneBank Accession#:** [BC027962](#)

**Protein Accession#:** [AAH27962](#)

**Gene Name:** SH2D3C

**Gene Alias:** CHAT,FLJ39664,NSP3,PRO34088

**Gene Description:** SH2 domain containing 3C

**Omim ID:** [604722](#)

**Gene Ontology:** [Hyperlink](#)

**Other Designations:** OTTHUMP00000022206,OTTHUMP00000022207,SH2 domain-containing 3C,novel SH2-containing protein 3

### Related Disease

[Cleft Lip](#) [Cleft Palate](#)