



# SZABO SCANDIC

Part of Europa Biosite

## Produktinformation



Forschungsprodukte & Biochemikalien



Zellkultur & Verbrauchsmaterial



Diagnostik & molekulare Diagnostik



Laborgeräte & Service

Weitere Information auf den folgenden Seiten!  
See the following pages for more information!



### Lieferung & Zahlungsart

siehe unsere [Liefer- und Versandbedingungen](#)

### Zuschläge

- Mindermengenzuschlag
- Trockeneiszuschlag
- Gefahrgutzuschlag
- Expressversand

### SZABO-SCANDIC HandelsgmbH

Quellenstraße 110, A-1100 Wien

T. +43(0)1 489 3961-0

F. +43(0)1 489 3961-7

[mail@szabo-scandic.com](mailto:mail@szabo-scandic.com)

[www.szabo-scandic.com](http://www.szabo-scandic.com)

[linkedin.com/company/szaboscandic](https://www.linkedin.com/company/szaboscandic) 

## SH2D3C monoclonal antibody (M07), clone 3C5

Catalog # : H00010044-M07

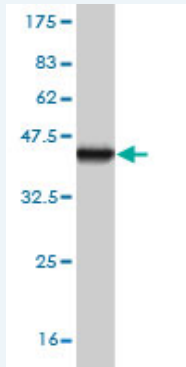
規格 : [ 100 ug ]

[List All](#)

### Specification

<b>Product Description:</b>	Mouse monoclonal antibody raised against a partial recombinant SH2D3C.
<b>Immunogen:</b>	SH2D3C (NP_005480, 1 a.a. ~ 110 a.a) partial recombinant protein with GST tag. MW of the GST tag alone is 26 KDa.
<b>Sequence:</b>	MTAVGRRCPALGSRGAAGEPEAGSDYVKFSKEYILDSSPEKLHKELEE ELKLSSTDLRSHAWYHGRIPREVSETLVQRNGDFLIRDLSLGLDYVLTC RWRNQALHFKI
<b>Host:</b>	Mouse
<b>Reactivity:</b>	Human
<b>Isotype:</b>	IgG1 Kappa

**Quality Control Testing:** Antibody Reactive Against Recombinant Protein.



Western Blot detection against Immunogen (37.84 KDa) .

**Storage Buffer:** In 1x PBS, pH 7.4

**Storage Instruction:** Store at -20°C or lower. Aliquot to avoid repeated freezing and thawing.

**MSDS:** [Download](#)

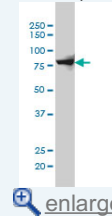
**Datasheet:** [Download](#)

### Applications

Western Blot (Cell lysate)

### Application Image

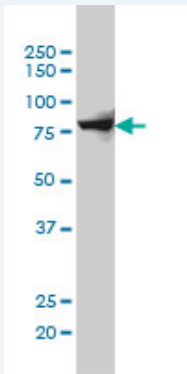
Western Blot (Cell lysate)



[enlarge](#)

Western Blot (Recombinant protein)

ELISA



SH2D3C monoclonal antibody (M07), clone 3C5 Western Blot analysis of SH2D3C expression in Hela S3 NE ( Cat # L013V3 ).

 [Protocol Download](#)

---

**Western Blot (Recombinant protein)**

 [Protocol Download](#)

---

**ELISA**

---

**Gene Information**

**Entrez GeneID:** [10044](#)

**GeneBank Accession#:** [NM\\_005489](#)

**Protein Accession#:** [NP\\_005480](#)

**Gene Name:** SH2D3C

**Gene Alias:** CHAT,FLJ39664,NSP3,PRO34088

**Gene Description:** SH2 domain containing 3C

**Omim ID:** [604722](#)

**Gene Ontology:** [Hyperlink](#)

**Other Designations:** OTTHUMP00000022206,OTTHUMP00000022207,SH2 domain-containing 3C,novel SH2-containing protein 3

---

**Related Disease**

[Cleft Lip](#) [Cleft Palate](#)