



SZABO SCANDIC

Part of Europa Biosite

Produktinformation



Forschungsprodukte & Biochemikalien



Zellkultur & Verbrauchsmaterial



Diagnostik & molekulare Diagnostik



Laborgeräte & Service

Weitere Information auf den folgenden Seiten!
See the following pages for more information!



Lieferung & Zahlungsart

siehe unsere [Liefer- und Versandbedingungen](#)

Zuschläge

- Mindermengenzuschlag
- Trockeneiszuschlag
- Gefahrgutzuschlag
- Expressversand

SZABO-SCANDIC HandelsgmbH

Quellenstraße 110, A-1100 Wien

T. +43(0)1 489 3961-0

F. +43(0)1 489 3961-7

mail@szabo-scandic.com

www.szabo-scandic.com

[linkedin.com/company/szaboscandic](https://www.linkedin.com/company/szaboscandic) 



SH2D3C monoclonal antibody (M25), clone 2B4

Catalog # : H00010044-M25

規格 : [100 ug]

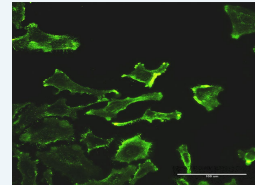
[List All](#)


Specification

Product Description:	Mouse monoclonal antibody raised against a full-length recombinant SH2D3C.
Immunogen:	SH2D3C (AAH27962, 1 a.a. ~ 703 a.a) full-length recombinant protein with GST tag. MW of the GST tag alone is 26 KDa.
Sequence:	MTAVGRRCPALGSRGAAGEPEAGSDYVKFSKEYILDSSPEKLHKELEE ELKLSSTDLRSHAWYHGRIPREVSETLVQRNGDFLIRDLSLGLDYVLT RWRNQALHFKINKVVKAGESYTHIQYLFQESFDHVPALVRYHVGSRKA VSEQSGAIYCPVNRTFPLRYLEASYGLGQSSKASPVSPPSGPKGSHM KRRSVTMTDGLTADKVTRSDGCPTSTSLPRPRDSIRSCALSMDQIPDLH SPMSPISESPSSPAYSTVTRVHAAPAAPSATALPASPVARRSSEPQLCPG SAPKTHGESDKGPHTSPSHTLGKASPSLSYSDPDSGHYCQLQPPV RGSREWAATETSSQQARSYGERLKELSENGAPEGDWGGKFTVPMVEV SSFNPATFQSLIPRDNRPLEVGLLRKVKELLAEVDARTLARHVTKVDCL VARILGVTKEMQTLMGVVRWGMELLTLPHGRQLRDLLERFHTMSIMLAV DILGCTGSAEERAALLHKTQLAELRGTMGNMFSFAAVMGALDMAQISR LEQTWVTLRQRHTEGAILYEKKLPFLKSLNEGKEGPPLSNTTFPHVLP TLLECD SAPPEGPEPWGSTEHGVEVLAHLEAARTVAHHGGLYHTNAEV KLQGFQARPELLEVFSTEFQMRLWGSQGASSQARRYEKFDKVLTA SHKLEPAVRSEEL
Host:	Mouse
Reactivity:	Human
Isotype:	IgG1 Kappa
Quality Control Testing:	Antibody Reactive Against Recombinant Protein.
Storage Buffer:	In 1x PBS, pH 7.4
Storage Instruction:	Store at -20°C or lower. Aliquot to avoid repeated freezing and thawing.
MSDS:	 Download
Datasheet:	 Download

Application Image

Immunofluorescence

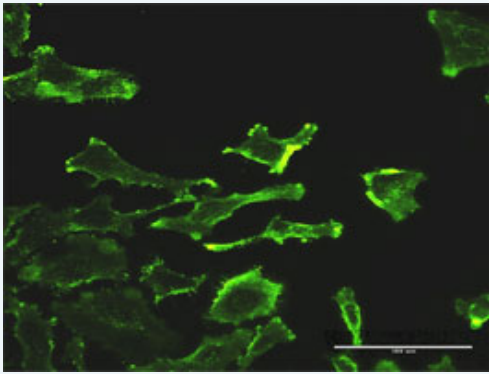


 [enlarge](#)

ELISA

Applications

Immunofluorescence



[enlarge this image](#)

Immunofluorescence of monoclonal antibody to SH2D3C on HeLa cell . [antibody concentration 30 ug/ml]

[Protocol Download](#)

ELISA

Gene Information

Entrez GeneID: [10044](#)

**GeneBank
Accession#:** [BC027962](#)

**Protein
Accession#:** [AAH27962](#)

Gene Name: SH2D3C

Gene Alias: CHAT,FLJ39664,NSP3,PRO34088

**Gene
Description:** SH2 domain containing 3C

Omim ID: [604722](#)

Gene Ontology: [Hyperlink](#)

**Other
Designations:** OTTHUMP00000022206,OTTHUMP00000022207,SH2 domain-containing 3C,novel SH2-containing protein 3

Related Disease

[Cleft Lip](#) [Cleft Palate](#)

[服務條款](#) | [隱私權政策](#) | [著作及商標](#) | [網站地圖](#)

©2016 亞諾法生技股份有限公司 Abnova Corporation. 版權所有.