



SZABO SCANDIC

Part of Europa Biosite

Produktinformation



Forschungsprodukte & Biochemikalien



Zellkultur & Verbrauchsmaterial



Diagnostik & molekulare Diagnostik



Laborgeräte & Service

Weitere Information auf den folgenden Seiten!
See the following pages for more information!



Lieferung & Zahlungsart

siehe unsere [Liefer- und Versandbedingungen](#)

Zuschläge

- Mindermengenzuschlag
- Trockeneiszuschlag
- Gefahrgutzuschlag
- Expressversand

SZABO-SCANDIC HandelsgmbH

Quellenstraße 110, A-1100 Wien

T. +43(0)1 489 3961-0

F. +43(0)1 489 3961-7

mail@szabo-scandic.com

www.szabo-scandic.com

[linkedin.com/company/szaboscandic](https://www.linkedin.com/company/szaboscandic) 

SH2D3A purified MaxPab mouse polyclonal antibody (B01P) MaxPab®

Catalog # : H00010045-B01P

規格 : [50 ug]

[List All](#)

Specification

Product Description: Mouse polyclonal antibody raised against a full-length human SH2D3A protein.

Immunogen: SH2D3A (AAH06281, 1 a.a. ~ 576 a.a) full-length human protein.

Sequence:
 MQVPQDGEDLAGQPWYHGLLSRQKAEALLQQNGDFLVRASGSRGGN
 PVISCRWRGSALHFEVFRVALRPRPGRPTALFQLEDEQFSPALVHSY
 MTGRRPLSQATGAVVSRPVTWQGPLRRSFSEDTLMDGPARIEPLRARK
 WSNSQPADLAHMGRSREDPAGMEASTMPISALPRTSSDPVLLKAPAPLG
 TVADSLRASDGQLQAKAPTKPPRTPSFELPDASERPPTYCELVPRVPSV
 QGTSPSQSCPEPEAPWWEAEDEEEENRCFTRPQAEISFCPHDAPSCL
 LGPQNRPLEPQVLHTLRGLFLEHHPGSTALHLLLVDCQATGLLGVTRDQ
 RGNMGVSSGLELLTLPHGHLRLELLERHQTLALAGALAVLGCSGPLEE
 RAAALRGLVELALALRPGAAGDLPGLAAVMGALLMPQVSRLEHTWRQL
 RRSHTEAALAFEQELKPLMRALDEGAGPCDPGEVALPHVAPMVRLLLEG
 EEVAGPLDESCERLLRTLHGARMVRDAPKFRKVAQRLRGFRPNPEL
 REALTTGFVRRLLWGSRGAGAPRAERFEKFQRVLVLSQRLEPDR

Host: Mouse

Reactivity: Human

Quality Control Testing: Antibody reactive against mammalian transfected lysate.

Storage Buffer: In 1x PBS, pH 7.4

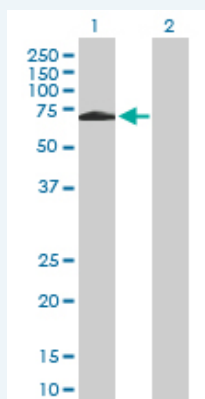
Storage Instruction: Store at -20°C or lower. Aliquot to avoid repeated freezing and thawing.

MSDS:  [Download](#)

Datasheet:  [Download](#)

Applications

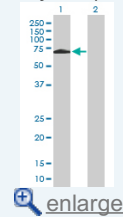
Western Blot (Transfected lysate)




Western Blot analysis of SH2D3A expression in transfected 293T cell line (H00010045-T01) by SH2D3A MaxPab polyclonal antibody.

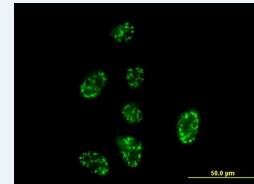
Application Image

Western Blot (Transfected lysate)



 [enlarge](#)

Immunofluorescence

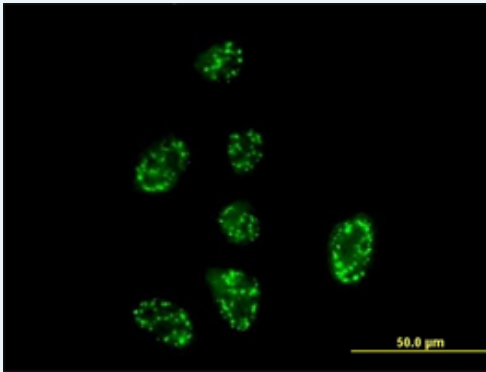



 [enlarge](#)

Lane 1: SH2D3A transfected lysate(63.36 KDa).
Lane 2: Non-transfected lysate.

 [Protocol Download](#)

Immunofluorescence



 [enlarge this image](#)

Immunofluorescence of purified MaxPab antibody to SH2D3A on HeLa cell. [antibody concentration 10 ug/ml]

 [Protocol Download](#)

Gene Information

Entrez GeneID: [10045](#)

**GeneBank
Accession#:** [BC006281](#)

**Protein
Accession#:** [AAH06281](#)

Gene Name: SH2D3A

Gene Alias: NSP1

**Gene
Description:** SH2 domain containing 3A

Omim ID: [604721](#)

Gene Ontology: [Hyperlink](#)

**Other
Designations:** SH2 domain-containing 3A,novel SH2-containing protein 1

[服務條款](#) | [隱私權政策](#) | [著作及商標](#) | [網站地圖](#)

©2016 亞諾法生技股份有限公司 Abnova Corporation. 版權所有.