



SZABO SCANDIC

Part of Europa Biosite

Produktinformation



Forschungsprodukte & Biochemikalien



Zellkultur & Verbrauchsmaterial



Diagnostik & molekulare Diagnostik



Laborgeräte & Service

Weitere Information auf den folgenden Seiten!
See the following pages for more information!



Lieferung & Zahlungsart

siehe unsere [Liefer- und Versandbedingungen](#)

Zuschläge

- Mindermengenzuschlag
- Trockeneiszuschlag
- Gefahrgutzuschlag
- Expressversand

SZABO-SCANDIC HandelsgmbH

Quellenstraße 110, A-1100 Wien

T. +43(0)1 489 3961-0

F. +43(0)1 489 3961-7

mail@szabo-scandic.com

www.szabo-scandic.com

[linkedin.com/company/szaboscandic](https://www.linkedin.com/company/szaboscandic) 

CST8 purified MaxPab mouse polyclonal antibody (B01P) MaxPab®

Catalog # : H00010047-B01P

規格 : [50 ug]

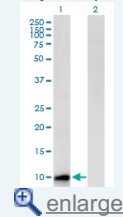
[List All](#)

Specification

Product Description:	Mouse polyclonal antibody raised against a full-length human CST8 protein.
Immunogen:	CST8 (AAH69536.1, 1 a.a. ~ 90 a.a) full-length human protein.
Sequence:	MQEYNKESEDKYVFLWKTLQAQLQVTNLLEYLIDVEIARSDCRKPLSTN EICAIQENSKLKRKLSCSFLVGLPWNGEFTVMEKKCEDA
Host:	Mouse
Reactivity:	Human
Quality Control Testing:	Antibody reactive against mammalian transfected lysate.
Storage Buffer:	In 1x PBS, pH 7.4
Storage Instruction:	Store at -20°C or lower. Aliquot to avoid repeated freezing and thawing.
MSDS:	Download
Datasheet:	Download

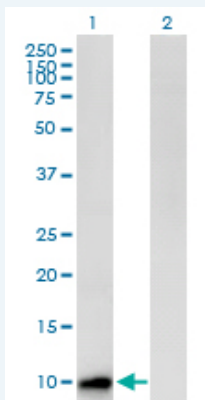
Application Image

Western Blot (Transfected lysate)



Applications

Western Blot (Transfected lysate)



Western Blot analysis of CST8 expression in transfected 293T cell line ([H00010047-T01](#)) by CST8 MaxPab polyclonal antibody.

Lane 1: CST8 transfected lysate(9.9 kDa).

Lane 2: Non-transfected lysate.

[Protocol Download](#)

Gene Information

Entrez GeneID: [10047](#)

GeneBank Accession#: [BC069536.1](#)

Protein Accession#: [AAH69536.1](#)

Gene Name: CST8

Gene Alias: CRES

Gene Description: cystatin 8 (cystatin-related epididymal specific)

Omim ID: [608683](#)

Gene Ontology: [Hyperlink](#)

Gene Summary: The cystatin superfamily encompasses proteins that contain multiple cystatin-like sequences. Some of the members are active cysteine protease inhibitors, while others have lost or perhaps never acquired this inhibitory activity. There are three inhibitory families in the superfamily, including the type 1 cystatins (stefins), type 2 cystatins and the kininogens. The type 2 cystatin proteins are a class of cysteine proteinase inhibitors found in a variety of human fluids and secretions. The cystatin locus on chromosome 20 contains the majority of the type 2 cystatin genes and pseudogenes. This gene is located in the cystatin locus and encodes a protein similar to type 2 cystatins. The protein exhibits highly tissue-specific expression in the reproductive tract, suggesting implicit roles in reproduction. Alternative splicing identified in mouse is suggested in human based on EST evidence but the full-length nature of putative variants has not been determined. [provided by RefSeq]

Other Designations: OTTHUMP00000030434,cystatin 8,cystatin-related epididymal spermatogenic protein,cystatin-related epididymal-specific

Related Disease

[Alzheimer Disease](#) [Alzheimer disease](#) [Cerebral Amyloid Angiopathy](#)
[Genetic Predisposition to Disease](#) [Neuroblastoma](#)