



SZABO SCANDIC

Part of Europa Biosite

Produktinformation



Forschungsprodukte & Biochemikalien



Zellkultur & Verbrauchsmaterial



Diagnostik & molekulare Diagnostik



Laborgeräte & Service

Weitere Information auf den folgenden Seiten!
See the following pages for more information!



Lieferung & Zahlungsart

siehe unsere [Liefer- und Versandbedingungen](#)

Zuschläge

- Mindermengenzuschlag
- Trockeneiszuschlag
- Gefahrgutzuschlag
- Expressversand

SZABO-SCANDIC HandelsgmbH

Quellenstraße 110, A-1100 Wien

T. +43(0)1 489 3961-0

F. +43(0)1 489 3961-7

mail@szabo-scandic.com

www.szabo-scandic.com

[linkedin.com/company/szaboscandic](https://www.linkedin.com/company/szaboscandic) 

CST8 293T Cell Transient Overexpression Lysate(Denatured)

Catalog # : H00010047-T01

規格 : [100 uL]

[List All](#)

Specification

Transfected Cell Line: 293T

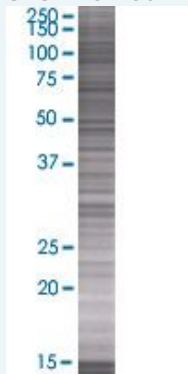
Plasmid: pCMV-CST8 full-length

Host: Human

Theoretical MW (kDa): 10.01

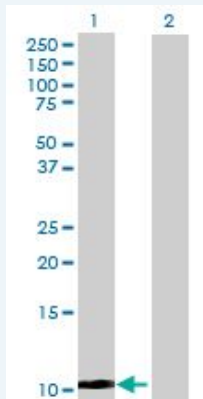
Quality Control Testing: Transient overexpression cell lysate was tested with Anti-CST8 antibody (H00010047-B01) by Western Blots.

SDS-PAGE Gel



CST8 transfected lysate.

Western Blot



Lane 1: CST8 transfected lysate (10.01 KDa)

Lane 2: Non-transfected lysate.

Storage Buffer: 1X Sample Buffer (50 mM Tris-HCl, 2% SDS, 10% glycerol, 300 mM 2-mercaptoethanol, 0.01% Bromophenol blue)

Storage Instruction: Store at -80°C. Aliquot to avoid repeated freezing and thawing.

MSDS:  [Download](#)

Applications

Western Blot

Gene Information

Entrez GeneID: [10047](#)

**GeneBank
Accession#:** [BC069536.1](#)

**Protein
Accession#:** [AAH69536.1](#)

Gene Name: CST8

Gene Alias: CRES

**Gene
Description:** cystatin 8 (cystatin-related epididymal specific)

Omim ID: [608683](#)

Gene Ontology: [Hyperlink](#)

Gene Summary: The cystatin superfamily encompasses proteins that contain multiple cystatin-like sequences. Some of the members are active cysteine protease inhibitors, while others have lost or perhaps never acquired this inhibitory activity. There are three inhibitory families in the superfamily, including the type 1 cystatins (stefins), type 2 cystatins and the kininogens. The type 2 cystatin proteins are a class of cysteine proteinase inhibitors found in a variety of human fluids and secretions. The cystatin locus on chromosome 20 contains the majority of the type 2 cystatin genes and pseudogenes. This gene is located in the cystatin locus and encodes a protein similar to type 2 cystatins. The protein exhibits highly tissue-specific expression in the reproductive tract, suggesting implicit roles in reproduction. Alternative splicing identified in mouse is suggested in human based on EST evidence but the full-length nature of putative variants has not been determined. [provided by RefSeq]

**Other
Designations:** OTTHUMP00000030434,cystatin 8,cystatin-related epididymal spermatogenic protein,cystatin-related epididymal-specific

Related Disease

[Alzheimer Disease](#) [Alzheimer disease](#) [Cerebral Amyloid Angiopathy](#)
[Genetic Predisposition to Disease](#) [Neuroblastoma](#)

[服務條款](#) | [隱私權政策](#) | [著作及商標](#) | [網站地圖](#)

©2016 亞諾法生技股份有限公司 Abnova Corporation. 版權所有.