



SZABO SCANDIC

Part of Europa Biosite

Produktinformation



Forschungsprodukte & Biochemikalien



Zellkultur & Verbrauchsmaterial



Diagnostik & molekulare Diagnostik



Laborgeräte & Service

Weitere Information auf den folgenden Seiten!
See the following pages for more information!



Lieferung & Zahlungsart

siehe unsere [Liefer- und Versandbedingungen](#)

Zuschläge

- Mindermengenzuschlag
- Trockeneiszuschlag
- Gefahrgutzuschlag
- Expressversand

SZABO-SCANDIC HandelsgmbH

Quellenstraße 110, A-1100 Wien

T. +43(0)1 489 3961-0

F. +43(0)1 489 3961-7

mail@szabo-scandic.com

www.szabo-scandic.com

[linkedin.com/company/szaboscandic](https://www.linkedin.com/company/szaboscandic) 



AP1M2 purified MaxPab mouse polyclonal antibody (B01P) MaxPab®

Catalog # : H00010053-B01P

規格 : [50 ug]

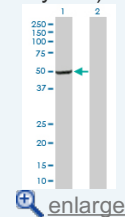
[List All](#)

Specification

Product Description:	Mouse polyclonal antibody raised against a full-length human AP1M2 protein.
Immunogen:	AP1M2 (NP_005489, 1 a.a. ~ 423 a.a) full-length human protein.
Sequence:	MSASAVFILDVKGKPLISRNYKGDVAMSKIEHFMPLLVQREEEGALAPLLS HGQVHFLWIKHSNLYLVATTSKNANASLVYSFLYKTIEVFCEYFKELEESI RDNFVIVYELLDELMDFGFPQTTDSKILQEYITQQSNKLETGKSRVPPTV TNAVSWRSEGIKYKNEVFIDVIESVNLVANGSVLLSEIVGTIKLKVFLS GMPPELRLGLNDRVLFELTGRSKNKSVLEEDVKFHQCVRLSRFDNDRTIS FIPDGDFFELMSYRLSTQVKPLIWIESVIEKFSHSRVEIMVKAKGQFKKQS VANGVEISVPVPSDADSPRFKTSVGS AKYVPERNVVWSIKSFPGGKEYL MRAHFG LPSVEKEEVEGRPPIGVKFEIPYFTVSGIQVRYMKIIEKSGYQAL PWVRYITQSGDYQLRTS
Host:	Mouse
Reactivity:	Human
Quality Control Testing:	Antibody reactive against mammalian transfected lysate.
Storage Buffer:	In 1x PBS, pH 7.4
Storage Instruction:	Store at -20°C or lower. Aliquot to avoid repeated freezing and thawing.
MSDS:	 Download
Datasheet:	 Download

Application Image

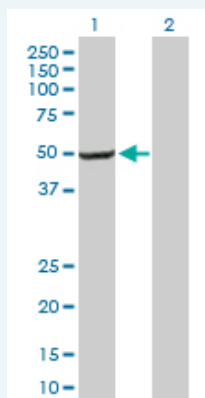
Western Blot (Transfected lysate)



 enlarge

Applications

Western Blot (Transfected lysate)



Western Blot analysis of AP1M2 expression in transfected 293T cell line by AP1M2 MaxPab polyclonal antibody.

Lane 1: AP1M2 transfected lysate(46.53 KDa).

Lane 2: Non-transfected lysate.

Gene Information

Entrez GeneID: [10053](#)

**GeneBank
Accession#:** [NM_005498](#)

**Protein
Accession#:** [NP_005489](#)

Gene Name: AP1M2

Gene Alias: AP1-mu2,HSMU1B,MU-1B,MU1B,mu2

**Gene
Description:** adaptor-related protein complex 1, mu 2 subunit

Omim ID: [607309](#)

Gene Ontology: [Hyperlink](#)

Gene Summary: This gene encodes a subunit of the heterotetrameric adaptor-related protein complex 1 (AP-1), which belongs to the adaptor complexes medium subunits family. This protein is capable of interacting with tyrosine-based sorting signals. [provided by RefSeq]

**Other
Designations:** AP-mu chain family member mu1B,HA1 47 kDa subunit 2,clathrin assembly protein complex 1 medium chain 2,clathrin coat assembly protein AP47 2,clathrin coat associated protein AP47 2,clathrin-associated adaptor medium chain mu2,golgi adaptor AP-1 47 kDa pro

Gene Pathway

[Lysosome](#)