



# SZABO SCANDIC

Part of Europa Biosite

## Produktinformation



Forschungsprodukte & Biochemikalien



Zellkultur & Verbrauchsmaterial



Diagnostik & molekulare Diagnostik



Laborgeräte & Service

Weitere Information auf den folgenden Seiten!  
See the following pages for more information!



### Lieferung & Zahlungsart

siehe unsere [Liefer- und Versandbedingungen](#)

### Zuschläge

- Mindermengenzuschlag
- Trockeneiszuschlag
- Gefahrgutzuschlag
- Expressversand

### SZABO-SCANDIC HandelsgmbH

Quellenstraße 110, A-1100 Wien

T. +43(0)1 489 3961-0

F. +43(0)1 489 3961-7

[mail@szabo-scandic.com](mailto:mail@szabo-scandic.com)

[www.szabo-scandic.com](http://www.szabo-scandic.com)

[linkedin.com/company/szaboscandic](https://www.linkedin.com/company/szaboscandic) 

## AP1M2 293T Cell Transient Overexpression Lysate(Denatured)

Catalog # : H00010053-T01

規格 : [ 100 uL ]

[List All](#)

### Specification

**Transfected Cell Line:** 293T

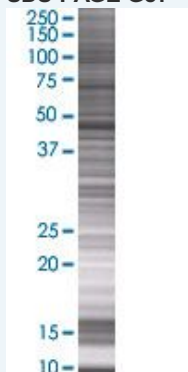
**Plasmid:** pCMV-AP1M2 full-length

**Host:** Human

**Theoretical MW (kDa):** 46.64

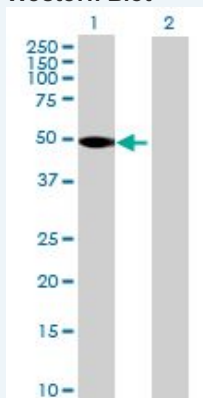
**Quality Control Testing:** Transient overexpression cell lysate was tested with Anti-AP1M2 antibody ([H00010053-B01](#)) by Western Blots.

#### SDS-PAGE Gel



AP1M2 transfected lysate.

#### Western Blot



Lane 1: AP1M2 transfected lysate ( 46.64 KDa)

Lane 2: Non-transfected lysate.

**Storage Buffer:** 1X Sample Buffer (50 mM Tris-HCl, 2% SDS, 10% glycerol, 300 mM 2-mercaptoethanol, 0.01% Bromophenol blue)

**Storage Instruction:** Store at -80°C. Aliquot to avoid repeated freezing and thawing.

**MSDS:**  [Download](#)

### Applications

## Western Blot

### Gene Information

Entrez GeneID: [10053](#)

GeneBank Accession#: [NM\\_005498](#)

Protein Accession#: [NP\\_005489](#)

Gene Name: AP1M2

Gene Alias: AP1-mu2,HSMU1B,MU-1B,MU1B,mu2

Gene Description: adaptor-related protein complex 1, mu 2 subunit

Omim ID: [607309](#)

Gene Ontology: [Hyperlink](#)

**Gene Summary:** This gene encodes a subunit of the heterotetrameric adaptor-related protein complex 1 (AP-1), which belongs to the adaptor complexes medium subunits family. This protein is capable of interacting with tyrosine-based sorting signals. [provided by RefSeq]

**Other Designations:** AP-mu chain family member mu1B,HA1 47 kDa subunit 2,clathrin assembly protein complex 1 medium chain 2,clathrin coat assembly protein AP47 2,clathrin coat associated protein AP47 2,clathrin-associated adaptor medium chain mu2,golgi adaptor AP-1 47 kDa pro

### Gene Pathway

[Lysosome](#)