



SZABO SCANDIC

Part of Europa Biosite

Produktinformation



Forschungsprodukte & Biochemikalien



Zellkultur & Verbrauchsmaterial



Diagnostik & molekulare Diagnostik



Laborgeräte & Service

Weitere Information auf den folgenden Seiten!
See the following pages for more information!



Lieferung & Zahlungsart

siehe unsere [Liefer- und Versandbedingungen](#)

Zuschläge

- Mindermengenzuschlag
- Trockeneiszuschlag
- Gefahrgutzuschlag
- Expressversand

SZABO-SCANDIC HandelsgmbH

Quellenstraße 110, A-1100 Wien

T. +43(0)1 489 3961-0

F. +43(0)1 489 3961-7

mail@szabo-scandic.com

www.szabo-scandic.com

[linkedin.com/company/szaboscandic](https://www.linkedin.com/company/szaboscandic) 

SAE1 MaxPab mouse polyclonal antibody (B01) MaxPab®

Catalog # : H00010055-B01

規格 : [50 uL]

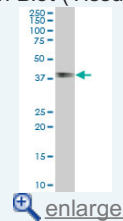
[List All](#)

Specification

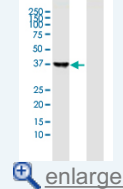
Product Description:	Mouse polyclonal antibody raised against a full-length human SAE1 protein.
Immunogen:	SAE1 (NP_005491, 1 a.a. ~ 346 a.a) full-length human protein.
Sequence:	MVEKEEAGGGISEEEAAQYDRQIRLWGLEAQKRLRASRVLLVGLKGLG AEIAKNLILAGVKGLTMLDHEQVTPEDPGAQFLIRTGSVGRNRAEASLER AQNLPMPMDVKVDTEDIEKKPESFFTQFDVAVCLCCSRDVIKVDQICHK NSIKFFTGDVFGYHGYTFANLGEHEFVEEKTKVAKVSQGVEDGPDTKRA KLDSETTMVKKKWFVCPVKEALEVDWSSEKAKAALKRRTSDYFLQVL LKFRTDKGRDPSSDYEEDESELLQIRNDVLDLGLISPDLLPEDFVRYCF SEMAPVCAVGGILAQEVKALSQRDPPHNNFFFFDGMKGNNGIVECLGPK
Host:	Mouse
Reactivity:	Human
Quality Control Testing:	Antibody reactive against mammalian transfected lysate.
Storage Buffer:	No additive
Storage Instruction:	Store at -20°C or lower. Aliquot to avoid repeated freezing and thawing.
Note:	For IHC and IF applications, antibody purification with Protein A will be needed prior to use.
MSDS:	Download
Datasheet:	Download

Application Image

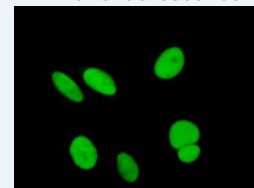
Western Blot (Tissue lysate)



Western Blot (Transfected lysate)

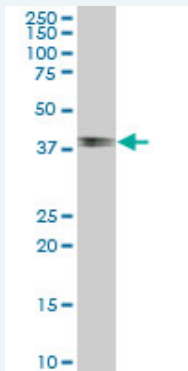


Immunofluorescence



Applications

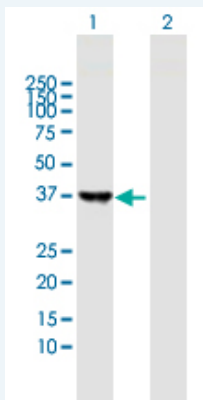
Western Blot (Tissue lysate)



SAE1 MaxPab polyclonal antibody. Western Blot analysis of SAE1 expression in human stomach.

[Protocol Download](#)

Western Blot (Transfected lysate)

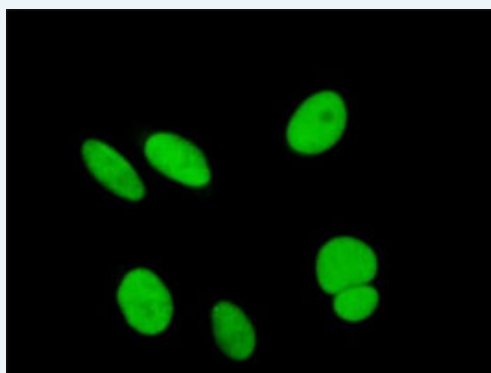


Western Blot analysis of SAE1 expression in transfected 293T cell line ([H00010055-T01](#)) by SAE1 MaxPab polyclonal antibody.

Lane 1: SAE1 transfected lysate(38.06 KDa).
Lane 2: Non-transfected lysate.

[Protocol Download](#)

Immunofluorescence



enlarge this image

Immunofluorescence of purified MaxPab antibody to SAE1 on HeLa cell. [antibody concentration 10 ug/ml]

[Protocol Download](#)

Gene Information

Entrez GeneID: [10055](#)

GeneBank Accession#: [NM_005500](#)

Protein Accession#: [NP_005491](#)

Gene Name: SAE1

Gene Alias: AOS1,FLJ3091,HSPC140,SUA1

Gene Description: SUMO1 activating enzyme subunit 1

Gene Ontology: [Hyperlink](#)

Other Designations: SUMO-1 activating enzyme E1 N subunit,SUMO-1 activating enzyme subunit 1,activator of SUMO1,sentrin/SUMO-activating protein AOS1,ubiquitin-like protein SUMO-1 activating enzyme

Gene Pathway

[Ubiquitin mediated proteolysis](#)

