



SZABO SCANDIC

Part of Europa Biosite

Produktinformation



Forschungsprodukte & Biochemikalien



Zellkultur & Verbrauchsmaterial



Diagnostik & molekulare Diagnostik



Laborgeräte & Service

Weitere Information auf den folgenden Seiten!
See the following pages for more information!



Lieferung & Zahlungsart

siehe unsere [Liefer- und Versandbedingungen](#)

Zuschläge

- Mindermengenzuschlag
- Trockeneiszuschlag
- Gefahrgutzuschlag
- Expressversand

SZABO-SCANDIC HandelsgmbH

Quellenstraße 110, A-1100 Wien

T. +43(0)1 489 3961-0

F. +43(0)1 489 3961-7

mail@szabo-scandic.com

www.szabo-scandic.com

[linkedin.com/company/szaboscandic](https://www.linkedin.com/company/szaboscandic) 

SAE1 monoclonal antibody (M01), clone 1G4-1G5

Catalog # : H00010055-M01

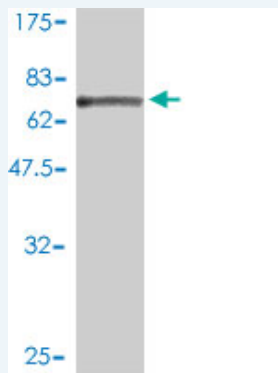
規格 : [100 ug]

[List All](#)

Specification

Product Description:	Mouse monoclonal antibody raised against a full length recombinant SAE1.
Immunogen:	SAE1 (AAH00344, 1 a.a. ~ 346 a.a) full-length recombinant protein with GST tag. MW of the GST tag alone is 26 KDa.
Sequence:	MVEKEEAGGGISEEEAAQYDRQIRLWGLEAQKRLRASRVLLVGLKGLG AEIAKNLILAGVKGLTMLDHEQVTPEDPGAQFLIRTGSVGRNRAEASLER AQNLNPMVDVKVDTEDIEKKPESFFTQF DAVCLTCCSRDVIKVDQICHK NSIKFFTGDVFGYHGYTFANLGEHEFVEEKTKVAKVSQGVEDGPDTKRA KLDSETTMVKKKVVFCPVKEALEVDWSSEKAKAALKRRTSDYFLLQVL LKFRTDKGRDPSSDTYEEDSELLQIRNDVLDLGLSPDLLPEDFVRYCF SEMAPVCAVVGILAQEIVKALSQRDPPHNNFFFFDGMKGNNGIVECLGPK
Host:	Mouse
Reactivity:	Human
Isotype:	IgG1 lambda

Quality Control Testing: Antibody Reactive Against Recombinant Protein.



Western Blot detection against Immunogen (63.8 KDa) .

Storage Buffer: In 1x PBS, pH 7.4

Storage Instruction: Store at -20°C or lower. Aliquot to avoid repeated freezing and thawing.

MSDS: [Download](#)

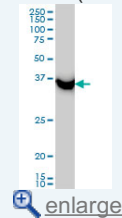
Datasheet: [Download](#)

Publication Reference

1. [Autoantibodies to small ubiquitin-like modifier activating enzymes in Japanese patients with dermatomyositis: comparison with a UK Caucasian cohort.](#)
Fujimoto M, Matsushita T, Hamaguchi Y, Kaji K, Asano Y, Ogawa F, Yamaoka T, Fujikawa K, Tsukada T, Sato K, Echigo T, Hasegawa M, Takehara K. *Ann Rheum Dis.* 2012 Jul 26.

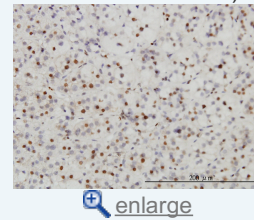
Application Image

Western Blot (Cell lysate)

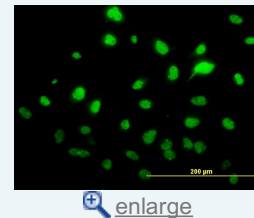


Western Blot (Recombinant protein)

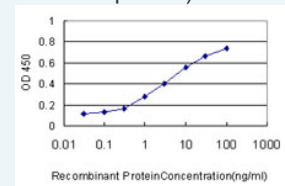
Immunohistochemistry (Formalin/PFA-fixed paraffin-embedded sections)



Immunofluorescence



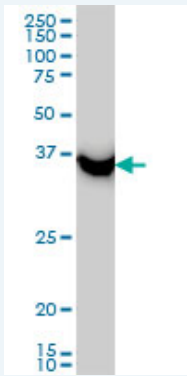
Sandwich ELISA (Recombinant protein)



ELISA

Applications

Western Blot (Cell lysate)



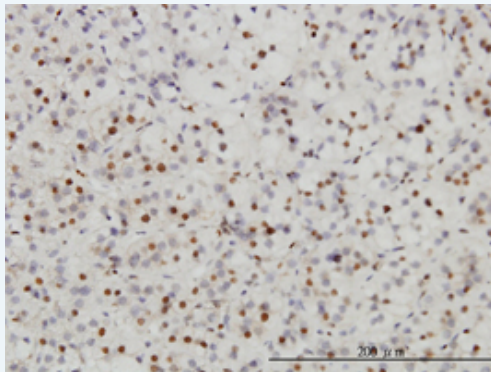
SAE1 monoclonal antibody (M01), clone 1G4-1G5 Western Blot analysis of SAE1 expression in HeLa (Cat # L013V1).


 [Protocol Download](#)

Western Blot (Recombinant protein)

 [Protocol Download](#)

Immunohistochemistry (Formalin/PFA-fixed paraffin-embedded sections)

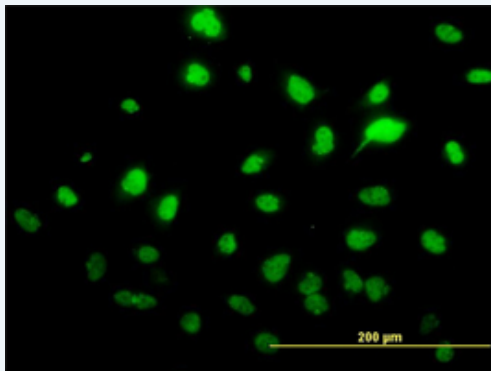



 [enlarge this image](#)

Immunoperoxidase of monoclonal antibody to SAE1 on formalin-fixed paraffin-embedded human adrenal gland. [antibody concentration 3 ug/ml]

 [Protocol Download](#)

Immunofluorescence

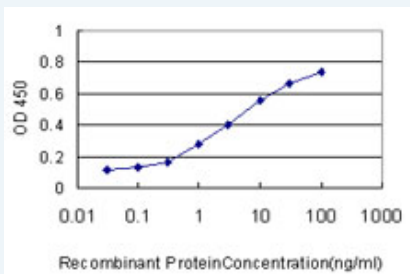


 [enlarge this image](#)

Immunofluorescence of monoclonal antibody to SAE1 on HeLa cell. [antibody concentration 10 ug/ml]

 [Protocol Download](#)

Sandwich ELISA (Recombinant protein)



Detection limit for recombinant GST tagged SAE1 is approximately 0.1ng/ml as a capture antibody.

 [Protocol Download](#)

ELISA

Gene Information

Entrez GeneID: [10055](#)

**GeneBank
Accession#:** [BC000344](#)

**Protein
Accession#:** [AAH00344](#)

Gene Name: SAE1

Gene Alias: AOS1,FLJ3091,HSPC140,SUA1

**Gene
Description:** SUMO1 activating enzyme subunit 1

Gene Ontology: [Hyperlink](#)

**Other
Designations:** SUMO-1 activating enzyme E1 N subunit,SUMO-1 activating enzyme subunit 1,activator of SUMO1,sentrin/SUMO-activating protein AOS1,ubiquitin-like protein SUMO-1 activating enzyme

Gene Pathway

[Ubiquitin mediated proteolysis](#)

[服務條款](#) | [隱私權政策](#) | [著作及商標](#) | [網站地圖](#)

©2016 亞諾法生技股份有限公司 Abnova Corporation. 版權所有.