



SZABO SCANDIC

Part of Europa Biosite

Produktinformation



Forschungsprodukte & Biochemikalien



Zellkultur & Verbrauchsmaterial



Diagnostik & molekulare Diagnostik



Laborgeräte & Service

Weitere Information auf den folgenden Seiten!
See the following pages for more information!



Lieferung & Zahlungsart

siehe unsere [Liefer- und Versandbedingungen](#)

Zuschläge

- Mindermengenzuschlag
- Trockeneiszuschlag
- Gefahrgutzuschlag
- Expressversand

SZABO-SCANDIC HandelsgmbH

Quellenstraße 110, A-1100 Wien

T. +43(0)1 489 3961-0

F. +43(0)1 489 3961-7

mail@szabo-scandic.com

www.szabo-scandic.com

[linkedin.com/company/szaboscandic](https://www.linkedin.com/company/szaboscandic) 

ABCB6 monoclonal antibody (M01), clone 3E1

Catalog # : H00010058-M01

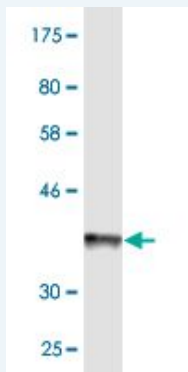
規格 : [100 ug]

List All

Specification

Product Description:	Mouse monoclonal antibody raised against a partial recombinant ABCB6.
Immunogen:	ABCB6 (NP_005680, 743 a.a. ~ 842 a.a) partial recombinant protein with GST tag. MW of the GST tag alone is 26 KDa.
Sequence:	KAPGIILLDEATSALDTSNERAIQASLAKVCANRTTIVVAHRLSTWVADQILVIKDGCVIERVERHEALLSRGGVYADMWQLQQGQEETSEDTKPQTMER
Host:	Mouse
Reactivity:	Human
Isotype:	IgG2a Kappa

Quality Control Testing: Antibody Reactive Against Recombinant Protein.



Western Blot detection against Immunogen (36.74 KDa) .

Storage Buffer: In 1x PBS, pH 7.4

Storage Instruction: Store at -20°C or lower. Aliquot to avoid repeated freezing and thawing.

MSDS: [Download](#)

Datasheet: [Download](#)

Applications

Western Blot (Recombinant protein)

[Protocol Download](#)

ELISA

Gene Information

Entrez GeneID: [10058](#)

GeneBank [NM_005689](#)

Application Image

Western Blot (Recombinant protein)

ELISA

Accession#:**Protein** [NP_005680](#)**Accession#:****Gene Name:** ABCB6**Gene Alias:** ABC,ABC14,EST45597,FLJ22414,MTABC3,PRP,umat**Gene Description:** ATP-binding cassette, sub-family B (MDR/TAP), member 6**Omim ID:** [605452](#)**Gene Ontology:** [Hyperlink](#)

Gene Summary: The membrane-associated protein encoded by this gene is a member of the superfamily of ATP-binding cassette (ABC) transporters. ABC proteins transport various molecules across extra- and intra-cellular membranes. ABC genes are divided into seven distinct subfamilies (ABC1, MDR/TAP, MRP, ALD, OABP, GCN20, White). This protein is a member of the MDR/TAP subfamily. Members of the MDR/TAP subfamily are involved in multidrug resistance as well as antigen presentation. This half-transporter likely plays a role in mitochondrial function. Localized to 2q26, this gene is considered a candidate gene for lethal neonatal metabolic syndrome, a disorder of mitochondrial function. [provided by RefSeq]

Other Designations: ATP-binding cassette half-transporter,ATP-binding cassette, sub-family B, member 6**Gene Pathway**[ABC transporters](#)**Related Disease**[Abnormalities, Multiple Acidosis, Lactic Cholestasis](#) [Genetic Predisposition to Disease](#)
[Growth Disorders](#) [Renal Aminoacidurias](#) [Syndrome](#)