



# SZABO SCANDIC

Part of Europa Biosite

## Produktinformation



Forschungsprodukte & Biochemikalien



Zellkultur & Verbrauchsmaterial



Diagnostik & molekulare Diagnostik



Laborgeräte & Service

Weitere Information auf den folgenden Seiten!  
See the following pages for more information!



### Lieferung & Zahlungsart

siehe unsere [Liefer- und Versandbedingungen](#)

### Zuschläge

- Mindermengenzuschlag
- Trockeneiszuschlag
- Gefahrgutzuschlag
- Expressversand

### SZABO-SCANDIC HandelsgmbH

Quellenstraße 110, A-1100 Wien

T. +43(0)1 489 3961-0

F. +43(0)1 489 3961-7

[mail@szabo-scandic.com](mailto:mail@szabo-scandic.com)

[www.szabo-scandic.com](http://www.szabo-scandic.com)

[linkedin.com/company/szaboscandic](https://www.linkedin.com/company/szaboscandic) 



## ABCF2 MaxPab mouse polyclonal antibody (B01) MaxPab®

Catalog # : H00010061-B01

規格 : [ 50 uL ]

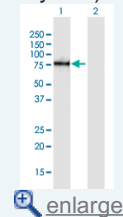
[List All](#)


### Specification

<b>Product Description:</b>	Mouse polyclonal antibody raised against a full-length human ABCF2 protein.
<b>Immunogen:</b>	ABCF2 (NP_009120, 1 a.a. ~ 623 a.a) full-length human protein.
<b>Sequence:</b>	MPSDLAKKKAAKKKEAAKARQRPRKGHEENGDVVTEPQVAEKNEANGR ETTEVDLLTKELEDGFEMKKAARAVTGVLASHPNSTDVHIINLSLTFHGQE LLSDTKLELNSGRRYGLIGLNGIGKSMLLSAIGKREVPIDYHILTRTEMP PSDKTPLHCVMEVDTERAMLEKEAERLAHEDAECLELMELYERLEELDA DKAEMRASRILHGLGFTPAMQRKCLKDFSGGWRMRVALARALFIRPFML LLDEPTNHLDDLACVWLEELKTFKRILVLSHSQDFLNGVCTNIIHMHNK KLKYTYGNYDQYVKTRLELEENQMKRFHWEQDQIAHMKNYIARFGHGSA KLARQAQSKEKTLQKMMASGLTERVSDKTLFSYFPFCGKIPPPVIMVQ NVSFKYTKDGPICYNNLEFGIDLTRVALVGPNGAGKSTLLKLLTGELLP TDGMIRKSHSVKIGRYHQHLQEQLDLDSPLEYMMKCYPEIKEKEEMRKII GRYGLTGKQQVSPIRNLSDGQKCRVCLAWLAWQNPMLFLDEPTNHL IETIDALADAINFEFEGGMMLVSHDFRLIQQVAQEIVVCEKQTITKWPGDILA YKEHLKSKLVDEEPQLTKRTHNV
<b>Host:</b>	Mouse
<b>Reactivity:</b>	Human
<b>Quality Control Testing:</b>	Antibody reactive against mammalian transfected lysate.
<b>Storage Buffer:</b>	No additive
<b>Storage Instruction:</b>	Store at -20°C or lower. Aliquot to avoid repeated freezing and thawing.
<b>Note:</b>	For IHC and IF applications, antibody purification with Protein A will be needed prior to use.
<b>MSDS:</b>	 <a href="#">Download</a>
<b>Datasheet:</b>	 <a href="#">Download</a>

### Application Image

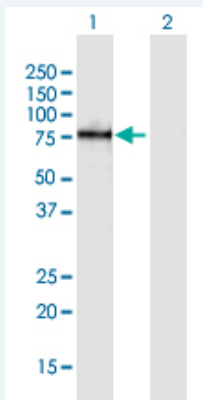
Western Blot (Transfected lysate)



 [enlarge](#)

### Applications

Western Blot (Transfected lysate)



Western Blot analysis of ABCF2 expression in transfected 293T cell line ([H00010061-T01](#)) by ABCF2 MaxPab polyclonal antibody.

Lane 1: ABCF2 transfected lysate(68.53 KDa).  
Lane 2: Non-transfected lysate.

 [Protocol Download](#)

### Gene Information

**Entrez GeneID:** [10061](#)

**GeneBank Accession#:** [NM\\_007189](#)

**Protein Accession#:** [NP\\_009120](#)

**Gene Name:** ABCF2

**Gene Alias:** ABC28,DKFZp586K1823,EST133090,HUSSY-18,HUSSY18,M-ABC1

**Gene Description:** ATP-binding cassette, sub-family F (GCN20), member 2

**Gene Ontology:** [Hyperlink](#)

**Gene Summary:** The protein encoded by this gene is a member of the superfamily of ATP-binding cassette (ABC) transporters. ABC proteins transport various molecules across extra- and intracellular membranes. ABC genes are divided into seven distinct subfamilies (ABC1, MDR/TAP, MRP, ALD, OABP, GCN20, and White). This protein is a member of the GCN20 subfamily. Alternative splicing of this gene results in multiple transcript variants. [provided by RefSeq]

**Other Designations:** ABC-type transport protein,ATP-binding cassette, sub-family F, member 2,Iron inhibited ABC transporter 2