



SZABO SCANDIC

Part of Europa Biosite

Produktinformation



Forschungsprodukte & Biochemikalien



Zellkultur & Verbrauchsmaterial



Diagnostik & molekulare Diagnostik



Laborgeräte & Service

Weitere Information auf den folgenden Seiten!
See the following pages for more information!



Lieferung & Zahlungsart

siehe unsere [Liefer- und Versandbedingungen](#)

Zuschläge

- Mindermengenzuschlag
- Trockeneiszuschlag
- Gefahrgutzuschlag
- Expressversand

SZABO-SCANDIC HandelsgmbH

Quellenstraße 110, A-1100 Wien

T. +43(0)1 489 3961-0

F. +43(0)1 489 3961-7

mail@szabo-scandic.com

www.szabo-scandic.com

[linkedin.com/company/szaboscandic](https://www.linkedin.com/company/szaboscandic) 

NR1H3 293T Cell Transient Overexpression Lysate(Denatured)

Catalog # : H00010062-T01

規格 : [100 uL]

[List All](#)

Specification

Transfected Cell Line: 293T

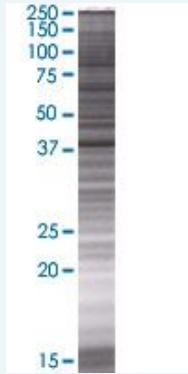
Plasmid: pCMV-NR1H3 full-length

Host: Human

Theoretical MW (kDa): 44.33

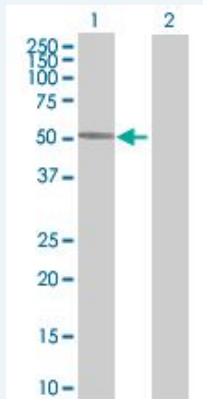
Quality Control Testing: Transient overexpression cell lysate was tested with Anti-NR1H3 antibody ([H00010062-B01](#)) by Western Blots.

SDS-PAGE Gel



NR1H3 transfected lysate.

Western Blot



Lane 1: NR1H3 transfected lysate (44.33 KDa)

Lane 2: Non-transfected lysate.

Storage Buffer: 1X Sample Buffer (50 mM Tris-HCl, 2% SDS, 10% glycerol, 300 mM 2-mercaptoethanol, 0.01% Bromophenol blue)

Storage Instruction: Store at -80°C. Aliquot to avoid repeated freezing and thawing.

MSDS:  [Download](#)

Applications

Application Image

Western Blot

Western Blot

Gene Information

Entrez GeneID: [10062](#)

GeneBank Accession#: [BC041172.1](#)

Protein Accession#: [AAH41172.1](#)

Gene Name: NR1H3

Gene Alias: LXR-a,LXRA,RLD-1

Gene Description: nuclear receptor subfamily 1, group H, member 3

Omim ID: [602423](#)

Gene Ontology: [Hyperlink](#)

Other Designations: liver X receptor alpha,liver X receptor, alpha,liver X receptor-alpha

Gene Pathway

[PPAR signaling pathway](#)

Related Disease

[Cardiovascular Diseases](#) [Coronary Artery Disease](#) [Diabetes Mellitus, Type 2](#) [Dyslipidemias](#) [Edema](#) [Gallstones](#) [Genetic Predisposition to Disease](#) [Hypercholesterolemia](#) [Hyperlipidemia, Familial Combined](#) [Kidney Failure, Chronic](#) [Lymphoma, Non-Hodgkin](#) [Metabolic Syndrome X](#) [Obesity](#)

[服務條款](#) | [隱私權政策](#) | [著作及商標](#) | [網站地圖](#)

©2016 亞諾法生技股份有限公司 Abnova Corporation. 版權所有.