



# SZABO SCANDIC

Part of Europa Biosite

## Produktinformation



Forschungsprodukte & Biochemikalien



Zellkultur & Verbrauchsmaterial



Diagnostik & molekulare Diagnostik



Laborgeräte & Service

Weitere Information auf den folgenden Seiten!  
See the following pages for more information!



### Lieferung & Zahlungsart

siehe unsere [Liefer- und Versandbedingungen](#)

### Zuschläge

- Mindermengenzuschlag
- Trockeneiszuschlag
- Gefahrgutzuschlag
- Expressversand

### SZABO-SCANDIC HandelsgmbH

Quellenstraße 110, A-1100 Wien

T. +43(0)1 489 3961-0

F. +43(0)1 489 3961-7

[mail@szabo-scandic.com](mailto:mail@szabo-scandic.com)

[www.szabo-scandic.com](http://www.szabo-scandic.com)

[linkedin.com/company/szaboscandic](https://www.linkedin.com/company/szaboscandic) 

## TSPAN1 monoclonal antibody (M05), clone 3B4

Catalog # : H00010103-M05

規格 : [ 100 ug ]

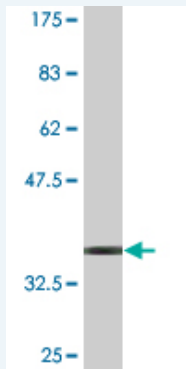
[List All](#)

### Specification

<b>Product Description:</b>	Mouse monoclonal antibody raised against a partial recombinant TSPAN1.
<b>Immunogen:</b>	TSPAN1 (NP_005718, 110 a.a. ~ 211 a.a) partial recombinant protein with GST tag. MW of the GST tag alone is 26 KDa.
<b>Sequence:</b>	YTTMAEHFLTLLVPAIKKDYGSQEDFTQVWNTTMKGLKCCGFTNYTD FEDSPYFKENSAPPPFCCNDNVTNTANETCTKQKAHDQKVEGCFNQLLY DIRTN
<b>Host:</b>	Mouse
<b>Reactivity:</b>	Human
<b>Isotype:</b>	IgG2a Kappa

**Quality Control** Antibody Reactive Against Recombinant Protein.

**Testing:**



Western Blot detection against Immunogen (36.96 KDa) .

**Storage Buffer:** In 1x PBS, pH 7.4

**Storage Instruction:** Store at -20°C or lower. Aliquot to avoid repeated freezing and thawing.

**MSDS:** [Download](#)

**Datasheet:** [Download](#)

### Publication Reference

- [Tspan-1 interacts with the thiamine transporter-1 in human intestinal epithelial cells and modulates its stability.](#)  
Nabokina SM, Senthilkumar SR, Said HM. Am J Physiol Gastrointest Liver Physiol. 2011 Nov;301(5):G808-13. Epub 2011 Aug 11.

### Applications

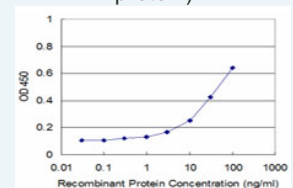
**Western Blot (Recombinant protein)**

[Protocol Download](#)

### Application Image

Western Blot (Recombinant protein)

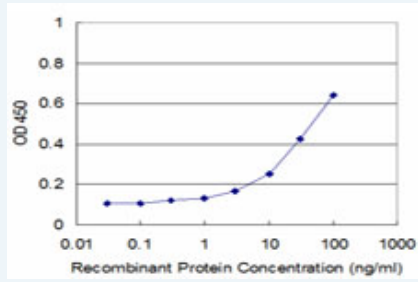
Sandwich ELISA (Recombinant protein)



[enlarge](#)

ELISA

## Sandwich ELISA (Recombinant protein)



Detection limit for recombinant GST tagged TSPAN1 is approximately 3ng/ml as a capture antibody.

 [Protocol Download](#)

## ELISA

### Gene Information

Entrez GeneID: [10103](#)

GeneBank [NM\\_005727](#)  
Accession#:

Protein [NP\\_005718](#)  
Accession#:

Gene Name: TSPAN1

Gene Alias: 9030418M05Rik,NET-1,RP11-322N21.1,TSPAN-1

Gene tetraspanin 1  
Description:

Gene Ontology: [Hyperlink](#)

**Gene Summary:** The protein encoded by this gene is a member of the transmembrane 4 superfamily, also known as the tetraspanin family. Most of these members are cell-surface proteins that are characterized by the presence of four hydrophobic domains. The proteins mediate signal transduction events that play a role in the regulation of cell development, activation, growth and motility. [provided by RefSeq]

Other [OTTHUMP00000008900,tetraspan 1,tetraspan 1 \(TSPAN-1\),tetraspan](#)  
Designations: NET-1,tetraspan TM4SF,tetraspanin TM4-C

### Related Disease

[Diabetes Mellitus](#) [Diabetes Mellitus, Type 2](#) [Genetic Predisposition to Disease](#)

[服務條款](#) | [隱私權政策](#) | [著作及商標](#) | [網站地圖](#)

©2016 亞諾法生技股份有限公司 Abnova Corporation. 版權所有.