



SZABO SCANDIC

Part of Europa Biosite

Produktinformation



Forschungsprodukte & Biochemikalien



Zellkultur & Verbrauchsmaterial



Diagnostik & molekulare Diagnostik



Laborgeräte & Service

Weitere Information auf den folgenden Seiten!
See the following pages for more information!



Lieferung & Zahlungsart

siehe unsere [Liefer- und Versandbedingungen](#)

Zuschläge

- Mindermengenzuschlag
- Trockeneiszuschlag
- Gefahrgutzuschlag
- Expressversand

SZABO-SCANDIC HandelsgmbH

Quellenstraße 110, A-1100 Wien

T. +43(0)1 489 3961-0

F. +43(0)1 489 3961-7

mail@szabo-scandic.com

www.szabo-scandic.com

[linkedin.com/company/szaboscandic](https://www.linkedin.com/company/szaboscandic)

PPIF polyclonal antibody (A01)

Catalog # : H00010105-A01

規格 : [50 uL]

List All

Specification

Product Description: Mouse polyclonal antibody raised against a partial recombinant PPIF.

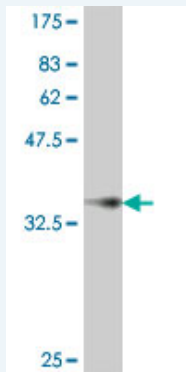
Immunogen: PPIF (NP_005720, 120 a.a. ~ 207 a.a) partial recombinant protein with GST tag.

Sequence: IYGSRFPDENFTLKHVGPVLSMANAGPNTNGSQFFICTIKTDWLDGKH VVFGHVKEGMDVVKKIESFGSKSGRTSKKIVITDCGQLS

Host: Mouse

Reactivity: Human

Quality Control Testing: Antibody Reactive Against Recombinant Protein.



Western Blot detection against Immunogen (35.79 kDa) .

Storage Buffer: 50 % glycerol

Storage Instruction: Store at -20°C or lower. Aliquot to avoid repeated freezing and thawing.

MSDS: [Download](#)

Datasheet: [Download](#)

Applications

Western Blot (Recombinant protein)

[Protocol Download](#)

ELISA

Gene Information

Entrez GeneID: [10105](#)

GeneBank Accession#: [NM_005729](#)

Protein [NP_005720](#)

Accession#:

Gene Name: PPIF

Gene Alias: CYP3,Cyp-D,FLJ90798,MGC117207

Gene peptidylprolyl isomerase F

Description:

Omim ID: [604486](#)

Gene Ontology: [Hyperlink](#)

Gene Summary: The protein encoded by this gene is a member of the peptidyl-prolyl cis-trans isomerase (PPIase) family. PPIases catalyze the cis-trans isomerization of proline imidic peptide bonds in oligopeptides and accelerate the folding of proteins. This protein is part of the mitochondrial permeability transition pore in the inner mitochondrial membrane. Activation of this pore is thought to be involved in the induction of apoptotic and necrotic cell death. [provided by RefSeq]

Other Designations: OTTHUMP00000019925,PPIase,cyclophilin 3,cyclophilin D,cyclophilin F,peptidyl-prolyl cis-trans isomerase, mitochondrial,rotamase

Related Disease

[Alzheimer Disease Genetic Predisposition to Disease Obesity Ovarian Failure, Premature Polycystic Ovary Syndrome Puberty, Delayed Puberty, Precocious Thrombophilia Tobacco Use Disorder](#)

[服務條款](#) | [隱私權政策](#) | [著作及商標](#) | [網站地圖](#)

©2016 亞諾法生技股份有限公司 Abnova Corporation. 版權所有.