



SZABO SCANDIC

Part of Europa Biosite

Produktinformation



Forschungsprodukte & Biochemikalien



Zellkultur & Verbrauchsmaterial



Diagnostik & molekulare Diagnostik



Laborgeräte & Service

Weitere Information auf den folgenden Seiten!
See the following pages for more information!



Lieferung & Zahlungsart

siehe unsere [Liefer- und Versandbedingungen](#)

Zuschläge

- Mindermengenzuschlag
- Trockeneiszuschlag
- Gefahrgutzuschlag
- Expressversand

SZABO-SCANDIC HandelsgmbH

Quellenstraße 110, A-1100 Wien

T. +43(0)1 489 3961-0

F. +43(0)1 489 3961-7

mail@szabo-scandic.com

www.szabo-scandic.com

[linkedin.com/company/szaboscandic](https://www.linkedin.com/company/szaboscandic) 

CTDSP2 MaxPab mouse polyclonal antibody (B01) MaxPab®

Catalog # : H00010106-B01

規格 : [50 uL]

[List All](#)

Specification

Product Description: Mouse polyclonal antibody raised against a full-length human CTDSP2 protein.

Immunogen: CTDSP2 (NP_005721.3, 1 a.a. ~ 271 a.a) full-length human protein.

Sequence:
 MEHGSITQARREDALVLTQGLVSKSSPKKPRGRNIFKALFCCFRAQHV
 GQSSSSTELAAYKEEANTIAKSDLLQCLQYQFYQIPGTCLLPEVTEEDQG
 RICVVIDLDELTVHSSFKPINNADFVPIEIEGTTHQVYVLRKPYVDEFLLRM
 GELFECVLFTASLAKYADPVTDLLDRCGVFRARLRFRESCV FHQGCYVK
 DLSRLGRDLRKTLLDNSPASYIFHPENAVPVQSWFDDMADTELLNLIPIF
 EELSGAEDVYVYSLGQLRAP

Host: Mouse

Reactivity: Human

Quality Control Testing: Antibody reactive against mammalian transfected lysate.

Storage Buffer: No additive

Storage Instruction: Store at -20°C or lower. Aliquot to avoid repeated freezing and thawing.

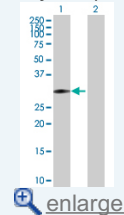
Note: For IHC and IF applications, antibody purification with Protein A will be needed prior to use.

MSDS: [Download](#)

Datasheet: [Download](#)

Application Image

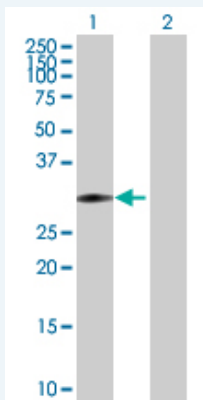
Western Blot (Transfected lysate)



[enlarge](#)

Applications

Western Blot (Transfected lysate)



Western Blot analysis of CTDSP2 expression in transfected 293T cell line (H00010106-T01) by CTDSP2 MaxPab polyclonal antibody.

Lane 1: CTDSP2 transfected lysate(29.81 KDa).

Lane 2: Non-transfected lysate.

Gene Information

Entrez GeneID: [10106](#)

**GeneBank
Accession#:** [NM_005730.3](#)

**Protein
Accession#:** [NP_005721.3](#)

Gene Name: CTDSP2

Gene Alias: OS4,PSR2,SCP2

**Gene
Description:** CTD (carboxy-terminal domain, RNA polymerase II, polypeptide A) small phosphatase 2

Omim ID: [608711](#)

Gene Ontology: [Hyperlink](#)

**Other
Designations:** NLI-interacting factor 2,conserved gene amplified in osteosarcoma,nuclear LIM interactor-interacting factor 2,small CTD phosphatase 2
