



# SZABO SCANDIC

Part of Europa Biosite

## Produktinformation



Forschungsprodukte & Biochemikalien



Zellkultur & Verbrauchsmaterial



Diagnostik & molekulare Diagnostik



Laborgeräte & Service

Weitere Information auf den folgenden Seiten!  
See the following pages for more information!



### Lieferung & Zahlungsart

siehe unsere [Liefer- und Versandbedingungen](#)

### Zuschläge

- Mindermengenzuschlag
- Trockeneiszuschlag
- Gefahrgutzuschlag
- Expressversand

### SZABO-SCANDIC HandelsgmbH

Quellenstraße 110, A-1100 Wien

T. +43(0)1 489 3961-0

F. +43(0)1 489 3961-7

[mail@szabo-scandic.com](mailto:mail@szabo-scandic.com)

[www.szabo-scandic.com](http://www.szabo-scandic.com)

[linkedin.com/company/szaboscandic](https://www.linkedin.com/company/szaboscandic) 

## CTDSP2 monoclonal antibody (M01), clone 4F4

Catalog # : H00010106-M01

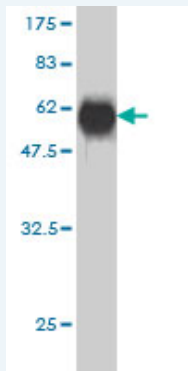
規格 : [ 100 ug ]

[List All](#)

### Specification

<b>Product Description:</b>	Mouse monoclonal antibody raised against a full length recombinant CTDSP2.
<b>Immunogen:</b>	CTDSP2 (AAH65920, 1 a.a. ~ 271 a.a) full-length recombinant protein with GST tag. MW of the GST tag alone is 26 KDa.
<b>Sequence:</b>	MEHGSITQARREDALVLTQQLVSKSSPKKPRGRNIFKALFCCFRAQHVGQSSSSTELAAYKEEANTIAKSDLLQCLQYQFYQIPGTCLLPEVTEEDQGRICVVIDLDELTVHSSFKPINNADFVPIEIGTTHQVYVLKRPYVDEFLRRMGELFECVLFASLAKYADPVTDLLDRCGVFRARLFRESCVFHQGCYVKDL SRLGRDLRKTLLDNPASYIFHPENAVPVQSWFDDMADTELLNLIPIFEELSGAEDVYTSLGQLRAP
<b>Host:</b>	Mouse
<b>Reactivity:</b>	Human
<b>Isotype:</b>	IgG2a Kappa

**Quality Control Testing:** Antibody Reactive Against Recombinant Protein.



Western Blot detection against Immunogen (55.55 KDa) .

**Storage Buffer:** In 1x PBS, pH 7.4

**Storage Instruction:** Store at -20°C or lower. Aliquot to avoid repeated freezing and thawing.

**MSDS:** [Download](#)

**Datasheet:** [Download](#)

### Applications

**Western Blot (Recombinant protein)**

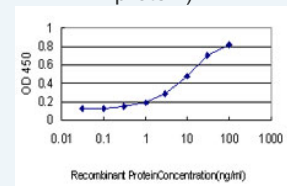
[Protocol Download](#)

**Sandwich ELISA (Recombinant protein)**

### Application Image

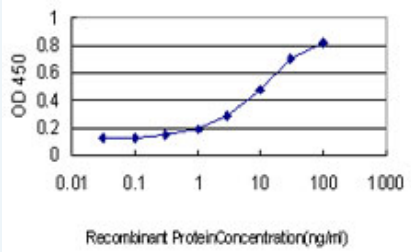
Western Blot (Recombinant protein)

Sandwich ELISA (Recombinant protein)



[enlarge](#)

ELISA



Detection limit for recombinant GST tagged CTDSP2 is approximately 0.3ng/ml as a capture antibody.

 [Protocol Download](#)

## ELISA

### Gene Information

**Entrez GeneID:** [10106](#)

**GeneBank** [BC065920](#)

**Accession#:**

**Protein** [AAH65920](#)

**Accession#:**

**Gene Name:** CTDSP2

**Gene Alias:** OS4,PSR2,SCP2

**Gene Description:** CTD (carboxy-terminal domain, RNA polymerase II, polypeptide A) small phosphatase 2

**Omim ID:** [608711](#)

**Gene Ontology:** [Hyperlink](#)

**Other Designations:** NLI-interacting factor 2, conserved gene amplified in osteosarcoma, nuclear LIM interactor-interacting factor 2, small CTD phosphatase 2

[服務條款](#) | [隱私權政策](#) | [著作及商標](#) | [網站地圖](#)

©2016 亞諾法生技股份有限公司 Abnova Corporation. 版權所有.