



SZABO SCANDIC

Part of Europa Biosite

Produktinformation



Forschungsprodukte & Biochemikalien



Zellkultur & Verbrauchsmaterial



Diagnostik & molekulare Diagnostik



Laborgeräte & Service

Weitere Information auf den folgenden Seiten!
See the following pages for more information!



Lieferung & Zahlungsart

siehe unsere [Liefer- und Versandbedingungen](#)

Zuschläge

- Mindermengenzuschlag
- Trockeneiszuschlag
- Gefahrgutzuschlag
- Expressversand

SZABO-SCANDIC HandelsgmbH

Quellenstraße 110, A-1100 Wien

T. +43(0)1 489 3961-0

F. +43(0)1 489 3961-7

mail@szabo-scandic.com

www.szabo-scandic.com

[linkedin.com/company/szaboscandic](https://www.linkedin.com/company/szaboscandic) 

ARPC2 monoclonal antibody (M01), clone 5C8

Catalog # : H00010109-M01

規格 : [100 ug]

[List All](#)

Specification

Product Description: Mouse monoclonal antibody raised against a full length recombinant ARPC2.

Immunogen: ARPC2 (AAH00590, 1 a.a. ~ 300 a.a) full-length recombinant protein with GST tag. MW of the GST tag alone is 26 KDa.

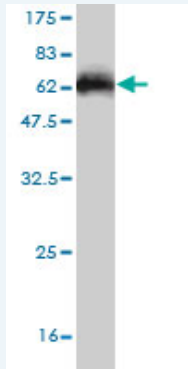
Sequence: MILLEVNRIIEETLALKFENAAAGNKPEAVEVTFADFDGVLVYHISNPNGDK
TKVMVSISLKFYKELQAHGADELLKRVYGSFLVNPESGYNVSLLYDLENL
PASKDSIMHQAGMLKRNCFASVFEKYFQFQEEGKEGENRAVIHYRDEET
MYVESKKDRVTVVFSTVFKDDDDVIGKVFMEQEFKEGRRASHTAPQVLF
SHREPPLELKDTDAAVGDNIGYITVLFPRHTNASARDNTINLIHTFRDYLLH
YHIKCSKAYIHTRMRAKTSDFLKVLNRARPDAEKKEMKTIITGKTFSSR

Host: Mouse

Reactivity: Human, Mouse, Rat

Isotype: IgG2b Kappa

Quality Control Testing: Antibody Reactive Against Recombinant Protein.



Western Blot detection against Immunogen (58.74 KDa) .

Storage Buffer: In 1x PBS, pH 7.4

Storage Instruction: Store at -20°C or lower. Aliquot to avoid repeated freezing and thawing.

MSDS: [Download](#)

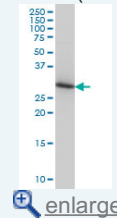
Datasheet: [Download](#)

Applications

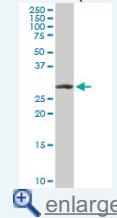
Western Blot (Cell lysate)

Application Image

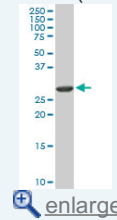
Western Blot (Cell lysate)



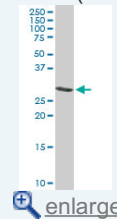
Western Blot (Cell lysate)



Western Blot (Cell lysate)

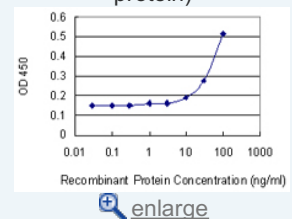


Western Blot (Cell lysate)

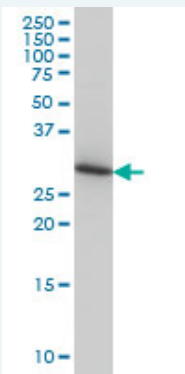


Western Blot (Recombinant protein)

Sandwich ELISA (Recombinant protein)



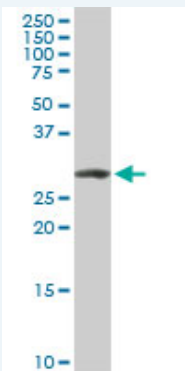
ELISA



ARPC2 monoclonal antibody (M01), clone 5C8 Western Blot analysis of ARPC2 expression in HeLa (Cat # L013V1).

 [Protocol Download](#)

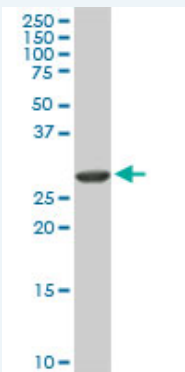
Western Blot (Cell lysate)



ARPC2 monoclonal antibody (M01), clone 5C8. Western Blot analysis of ARPC2 expression in PC-12 (Cat # L012V1).

 [Protocol Download](#)

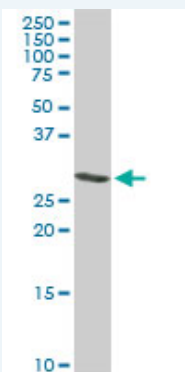
Western Blot (Cell lysate)



ARPC2 monoclonal antibody (M01), clone 5C8. Western Blot analysis of ARPC2 expression in Raw 264.7 (Cat # L024V1).

 [Protocol Download](#)

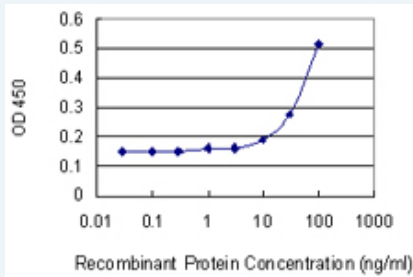
Western Blot (Cell lysate)



ARPC2 monoclonal antibody (M01), clone 5C8. Western Blot analysis of ARPC2 expression in NIH/3T3 (Cat # L018V1).

Western Blot (Recombinant protein)

Sandwich ELISA (Recombinant protein)



Detection limit for recombinant GST tagged ARPC2 is 3 ng/ml as a capture antibody.

ELISA

Gene Information

Entrez GeneID: [10109](#)

GeneBank Accession#: [BC000590](#)

Protein Accession#: [AAH00590](#)

Gene Name: ARPC2

Gene Alias: ARC34,PNAS-139,PRO2446,p34-Arc

Gene Description: actin related protein 2/3 complex, subunit 2, 34kDa

Omim ID: [604224](#)

Gene Ontology: [Hyperlink](#)

Gene Summary: This gene encodes one of seven subunits of the human Arp2/3 protein complex. The Arp2/3 protein complex has been implicated in the control of actin polymerization in cells and has been conserved through evolution. The exact role of the protein encoded by this gene, the p34 subunit, has yet to be determined. Two alternatively spliced variants have been characterized to date. Additional alternatively spliced variants have been described but their full length nature has not been determined. [provided by RefSeq]

Other Designations: ARP2/3 protein complex subunit 34,OTTHUMP00000164144,actin related protein 2/3 complex subunit 2,actin related protein 2/3 complex, subunit 2 (34 kD)

Gene Pathway

[Fc gamma R-mediated phagocytosis](#) [Regulation of actin cytoskeleton](#)

Related Disease

[Colitis, Ulcerative](#) [Crohn's disease](#) [Genetic Predisposition to Disease](#)

