



# SZABO SCANDIC

Part of Europa Biosite

## Produktinformation



Forschungsprodukte & Biochemikalien



Zellkultur & Verbrauchsmaterial



Diagnostik & molekulare Diagnostik



Laborgeräte & Service

Weitere Information auf den folgenden Seiten!  
See the following pages for more information!



### Lieferung & Zahlungsart

siehe unsere [Liefer- und Versandbedingungen](#)

### Zuschläge

- Mindermengenzuschlag
- Trockeneiszuschlag
- Gefahrgutzuschlag
- Expressversand

### SZABO-SCANDIC HandelsgmbH

Quellenstraße 110, A-1100 Wien

T. +43(0)1 489 3961-0

F. +43(0)1 489 3961-7

[mail@szabo-scandic.com](mailto:mail@szabo-scandic.com)

[www.szabo-scandic.com](http://www.szabo-scandic.com)

[linkedin.com/company/szaboscandic](https://www.linkedin.com/company/szaboscandic) 

## KIF20A MaxPab mouse polyclonal antibody (B01) MaxPab®

Catalog # : H00010112-B01

規格 : [ 50 uL ]

[List All](#)

### Specification

**Product Description:** Mouse polyclonal antibody raised against a full-length human KIF20A protein.

**Immunogen:** KIF20A (NP\_005724.1, 1 a.a. ~ 890 a.a) full-length human protein.

**Sequence:**  
 MSQGILSPPAGLLSDDDVVSPMFESTAADLGSVVRKNLLSDCSVSTSL  
 LEDKQQVPSSEDSMEKVKVYL RVRPLLPELERQEDQGCVRIENVETLVL  
 QAPKDSFALKSNERGIGQATHRFTFSQIFGPEVGQASFFNLTVKEMVKD  
 VLKGMWLIYTYGVVNSGKTHTIQGTIKDGGILPRSLALIFNSLQGGQLHPT  
 PDLKPLLSNEVIWLDISKQIRQEEMKLSLLNGGLQEEELSTSLKRSVYIES  
 RIGTSTSFDSGIAGLSSISQCTSSSQLDETSHRWAQPDTAPLPVPANIRF  
 SIWISFFEIYNELLYDLEPPSQQRKRQTLRLCEDQNGNPYVKDLNWIHV  
 QDAEEAWKLLKVGKRNQSFASHTLNQNSSRSHSIFIRILHLQEGEDIVPK  
 ISELSLCDLAGSERCKDQKSGERLKEAGNINTSLHTLGRCAIALRQNNQN  
 RSKQNLVPRFDSKLRVVFQGFFTGRGRSCMIVNVNPCASTYDETLHVAK  
 FSAIASQLVHAPPMQLGFPSSLHSFIKEHSLQVSPSLEKGAADTGLDDDDIE  
 NEADISMYGKEELLQVVEAMKTLKKERQEKLQLEMHLRDEICNEMVEQ  
 MQQREQWCSEHLDTQKELLEEMYEEKLNILKESLTSFYQEEIQRERDEKIE  
 ELEALLQEARQQSVAHQQSGSELALRRSQRLAASASTQQLQEVKAKLQ  
 QCKAELNSTTEELHKYQKMLEPPPSAKPFTIDVDKLEEGQKNIRLLRTE  
 LQKLGESLQSAERACCHSTGAGKLRQALTTCCDDILIKDQTLAELQNNM  
 VLVKLDLRKKAACIAEQYHTVLKLGQVSAKKRLGTNQNENQQPNQQPP  
 GKKPFLRNLLPRTPTCQSSTDCSPYARILRSRRSPLLKSGPFGKKY

**Host:** Mouse

**Reactivity:** Human

**Quality Control Testing:** Antibody reactive against mammalian transfected lysate.

**Storage Buffer:** No additive

**Storage Instruction:** Store at -20°C or lower. Aliquot to avoid repeated freezing and thawing.

**Note:** For IHC and IF applications, antibody purification with Protein A will be needed prior to use.

**MSDS:**  [Download](#)

**Datasheet:**  [Download](#)

### Publication Reference

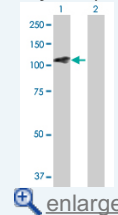
1. [Mad2 inhibits the mitotic kinesin MKlp2.](#)  
 Lee SH, McCormick F, Saya H.J Cell Biol. 2010 Dec 13;191(6):1069-77.

### Applications

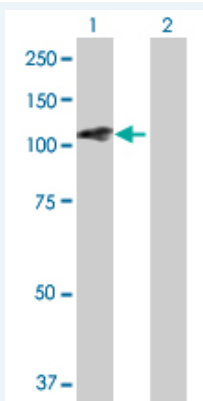
**Western Blot (Transfected lysate)**

### Application Image

Western Blot (Transfected lysate)




 [enlarge](#)



Western Blot analysis of KIF20A expression in transfected 293T cell line ([H00010112-T01](#)) by KIF20A MaxPab polyclonal antibody.

Lane 1: KIF20A transfected lysate(97.9 KDa).

Lane 2: Non-transfected lysate.

 [Protocol Download](#)

### Gene Information

**Entrez GeneID:** [10112](#)

**GeneBank** [NM\\_005733](#)

**Accession#:**

**Protein** [NP\\_005724.1](#)

**Accession#:**

**Gene Name:** KIF20A

**Gene Alias:** FLJ21151,MKLP2,RAB6KIFL

**Gene** kinesin family member 20A

**Description:**

**Omim ID:** [605664](#)

**Gene Ontology:** [Hyperlink](#)

**Other** OTTHUMP00000159481,RAB6 interacting, kinesin-like

**Designations:** (rabkinesin6),mitotic kinesin-like protein 2

[服務條款](#) | [隱私權政策](#) | [著作及商標](#) | [網站地圖](#)

©2016 亞諾法生技股份有限公司 Abnova Corporation. 版權所有.