



SZABO SCANDIC

Part of Europa Biosite

Produktinformation



Forschungsprodukte & Biochemikalien



Zellkultur & Verbrauchsmaterial



Diagnostik & molekulare Diagnostik



Laborgeräte & Service

Weitere Information auf den folgenden Seiten!
See the following pages for more information!



Lieferung & Zahlungsart

siehe unsere [Liefer- und Versandbedingungen](#)

Zuschläge

- Mindermengenzuschlag
- Trockeneiszuschlag
- Gefahrgutzuschlag
- Expressversand

SZABO-SCANDIC HandelsgmbH

Quellenstraße 110, A-1100 Wien

T. +43(0)1 489 3961-0

F. +43(0)1 489 3961-7

mail@szabo-scandic.com

www.szabo-scandic.com

[linkedin.com/company/szaboscandic](https://www.linkedin.com/company/szaboscandic) 

PREB polyclonal antibody (A01)

Catalog # : H00010113-A01

規格 : [50 uL]

List All

Specification

Product Description: Mouse polyclonal antibody raised against a partial recombinant PREB.

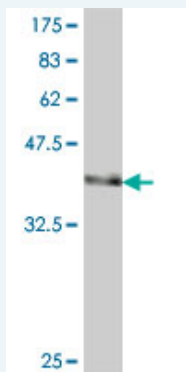
Immunogen: PREB (NP_037520, 51 a.a. ~ 150 a.a) partial recombinant protein with GST tag.

Sequence: ELINGRLSASLLHSHDTETRATMNLALAGDILAAGQDAHCQLLRFAQHQ
QQGNKAEKAGSKEQGPRQRKGAAPAEKKCGAETQHEGLELRVENLQA
VQTD

Host: Mouse

Reactivity: Human

Quality Control Testing: Antibody Reactive Against Recombinant Protein.



Western Blot detection against Immunogen (37.11 kDa) .

Storage Buffer: 50 % glycerol

Storage Instruction: Store at -20°C or lower. Aliquot to avoid repeated freezing and thawing.

MSDS: [Download](#)

Datasheet: [Download](#)

Applications

Western Blot (Recombinant protein)

[Protocol Download](#)

ELISA

Gene Information

Entrez GeneID: [10113](#)

GeneBank Accession#: [NM_013388](#)

Application Image

Western Blot (Recombinant protein)

ELISA

Protein Accession#: [NP_037520](#)

Gene Name: PREB

Gene Alias: MGC3467,SEC12

Gene Description: prolactin regulatory element binding

Omim ID: [606395](#)

Gene Ontology: [Hyperlink](#)

Gene Summary: This gene encodes a protein that specifically binds to a Pit1-binding element of the prolactin (PRL) promoter. This protein may act as a transcriptional regulator and is thought to be involved in some of the developmental abnormalities observed in patients with partial trisomy 2p. This gene overlaps the abhydrolase domain containing 1 (ABHD1) gene on the opposite strand. [provided by RefSeq]

Other Designations: prolactin regulatory binding-element protein, prolactin regulatory element binding protein

Related Disease

[Genetic Predisposition to Disease](#) [Mental Disorders](#)

[服務條款](#) | [隱私權政策](#) | [著作及商標](#) | [網站地圖](#)

©2016 亞諾法生技股份有限公司 Abnova Corporation. 版權所有.