



SZABO SCANDIC

Part of Europa Biosite

Produktinformation



Forschungsprodukte & Biochemikalien



Zellkultur & Verbrauchsmaterial



Diagnostik & molekulare Diagnostik



Laborgeräte & Service

Weitere Information auf den folgenden Seiten!
See the following pages for more information!



Lieferung & Zahlungsart

siehe unsere [Liefer- und Versandbedingungen](#)

Zuschläge

- Mindermengenzuschlag
- Trockeneiszuschlag
- Gefahrgutzuschlag
- Expressversand

SZABO-SCANDIC HandelsgmbH

Quellenstraße 110, A-1100 Wien

T. +43(0)1 489 3961-0

F. +43(0)1 489 3961-7

mail@szabo-scandic.com

www.szabo-scandic.com

[linkedin.com/company/szaboscandic](https://www.linkedin.com/company/szaboscandic)



FEM1B MaxPab mouse polyclonal antibody (B01) MaxPab®

Catalog # : H00010116-B01

規格 : [50 uL]

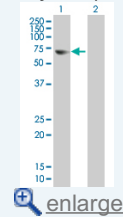
[List All](#)

Specification

Product Description:	Mouse polyclonal antibody raised against a full-length human FEM1B protein.
Immunogen:	FEM1B (NP_056137, 1 a.a. ~ 627 a.a) full-length human protein.
Sequence:	MEGLAGYVYKAASEGKVLTLAALLLNRSSEDIRYLLGYVSQGGQRSTP LIIAARNGHAKVVRLLLEHYRVQTQQTGTVRFDGYVIDGATALWCAAGA GHFEVVKLLVSHGANVNHTTVTNSTPLRAACFDGRLDIVKYLVENNANISI ANKYDNTCLMIAAYKGHTDVVRYLLEQRADPNAKAHCGATALHFAAEAG HIDIVKELIKWRAAIVNGHGMTPLKVAESCKADVVELLLSHADCRRSRI EALELLGASFANDRENYDIKTYHYLYLAMLERFQDGDNILEKEVLPPIHAY GNRTECRNPQELESIRQDRDALHMEGLIVRERILGADNIDVSHPIIRGAVY ADNMEFEQCIKLWLHALHLRQKGNRNTHKDLLRFAQVFSQMIHLNETVK APDIECVLRCSVLEIEQSMNRVKNISDADVHNAMDNIECNLYTFLYLVCIS TKTQCSEEDQCKINKQIYNLIHLDPRTRREGFTLLHLAVNSNTPVDDFHTND VCSFPNALVTKLLLDCAEVNAVDNEGNSALHIIVQYNRPISDFLTLHSIIISL VEAGAHTDMTNKQNKTPLDKSTTGVS EILLKTQMKMSLKCLAARAVRAN DINYQDQIPRTLEEFVGFH
Host:	Mouse
Reactivity:	Human
Quality Control Testing:	Antibody reactive against mammalian transfected lysate.
Storage Buffer:	No additive
Storage Instruction:	Store at -20°C or lower. Aliquot to avoid repeated freezing and thawing.
Note:	For IHC and IF applications, antibody purification with Protein A will be needed prior to use.
MSDS:	 Download
Datasheet:	 Download

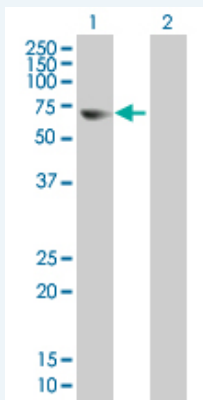
Application Image

Western Blot (Transfected lysate)




Applications

Western Blot (Transfected lysate)



Western Blot analysis of FEM1B expression in transfected 293T cell line ([H00010116-T01](#)) by FEM1B MaxPab polyclonal antibody.

Lane 1: FEM1B transfected lysate(68.97 KDa).
Lane 2: Non-transfected lysate.

 [Protocol Download](#)

Gene Information

Entrez GeneID: [10116](#)

GeneBank Accession#: [NM_015322](#)

Protein Accession#: [NP_056137](#)

Gene Name: FEM1B

Gene Alias: DKFZp451E0710,FIAA

Gene Description: fem-1 homolog b (C. elegans)

Gene Ontology: [Hyperlink](#)

Other Designations: FEM-1-like death receptor binding protein,fem-1 homolog b

Related Disease

[Atherosclerosis](#) [Calcinosis](#) [Coronary Artery Disease](#) [Insulin Resistance](#)
[Polycystic Ovary Syndrome](#) [Sex determination](#)