



SZABO SCANDIC

Part of Europa Biosite

Produktinformation



Forschungsprodukte & Biochemikalien



Zellkultur & Verbrauchsmaterial



Diagnostik & molekulare Diagnostik



Laborgeräte & Service

Weitere Information auf den folgenden Seiten!
See the following pages for more information!



Lieferung & Zahlungsart

siehe unsere [Liefer- und Versandbedingungen](#)

Zuschläge

- Mindermengenzuschlag
- Trockeneiszuschlag
- Gefahrgutzuschlag
- Expressversand

SZABO-SCANDIC HandelsgmbH

Quellenstraße 110, A-1100 Wien

T. +43(0)1 489 3961-0

F. +43(0)1 489 3961-7

mail@szabo-scandic.com

www.szabo-scandic.com

[linkedin.com/company/szaboscandic](https://www.linkedin.com/company/szaboscandic) 

ENAM monoclonal antibody (M01), clone 2C12

Catalog # : H00010117-M01

規格 : [100 ug]

[List All](#)

Specification

Product Description: Mouse monoclonal antibody raised against a partial recombinant ENAM.

Immunogen: ENAM (NP_114095, 1043 a.a. ~ 1141 a.a) partial recombinant protein with GST tag. MW of the GST tag alone is 26 KDa.

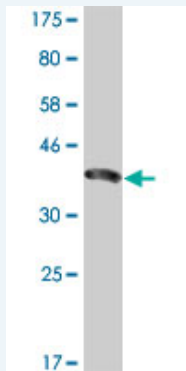
Sequence: ERQQQRPSNILHLPFCFGSKLAKHHSSTTGTPSSDGRQSPFDGDSITPTE
NPNTLVLELATEEQFKSINVDPLDADEHSPFEFLQRGTNVQDQVQDCLLL
Q

Host: Mouse

Reactivity: Human

Isotype: IgG2a Kappa

Quality Control Testing: Antibody Reactive Against Recombinant Protein.



Western Blot detection against Immunogen (36.63 KDa) .

Storage Buffer: In 1x PBS, pH 7.4

Storage Instruction: Store at -20°C or lower. Aliquot to avoid repeated freezing and thawing.

MSDS: [Download](#)

Datasheet: [Download](#)

Applications

Western Blot (Recombinant protein)

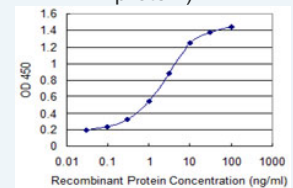
[Protocol Download](#)

Sandwich ELISA (Recombinant protein)

Application Image

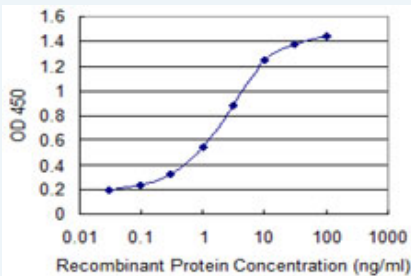
Western Blot (Recombinant protein)

Sandwich ELISA (Recombinant protein)



[enlarge](#)

ELISA



Detection limit for recombinant GST tagged ENAM is 0.03 ng/ml as a capture antibody.

 [Protocol Download](#)

ELISA

Gene Information

Entrez GeneID: [10117](#)

GeneBank [NM_031889](#)

Accession#:

Protein [NP_114095](#)

Accession#:

Gene Name: ENAM

Gene Alias: ADAI,AI1C,AIH2

Gene [enamelin](#)

Description:

Omim ID: [104500](#), [606585](#), [608563](#)

Gene Ontology: [Hyperlink](#)

Gene Summary: Dental enamel is a highly mineralized tissue with 85% of its volume occupied by unusually large, highly organized, hydroxyapatite crystals. This highly organized and unusual structure is thought to be rigorously controlled in ameloblasts through the interaction of a number of organic matrix molecules that include enamelin, amelogenin (AMELX; MIM 300391), ameloblastin (AMBN; MIM 601259), tuftelin (TUFT1; MIM 600087), dentine sialophosphoprotein (DSPP; MIM 125485), and a variety of enzymes. Enamelin is the largest protein in the enamel matrix of developing teeth and comprises approximately 5% of total enamel matrix protein.[supplied by OMIM

Other Designations: OTTHUMP00000160363,amelogenesis imperfecta 2, hypocalcification (autosomal dominant)

Related Disease

[Dental Caries](#)