



# SZABO SCANDIC

Part of Europa Biosite

## Produktinformation



Forschungsprodukte & Biochemikalien



Zellkultur & Verbrauchsmaterial



Diagnostik & molekulare Diagnostik



Laborgeräte & Service

Weitere Information auf den folgenden Seiten!  
See the following pages for more information!



### Lieferung & Zahlungsart

siehe unsere [Liefer- und Versandbedingungen](#)

### Zuschläge

- Mindermengenzuschlag
- Trockeneiszuschlag
- Gefahrgutzuschlag
- Expressversand

### SZABO-SCANDIC HandelsgmbH

Quellenstraße 110, A-1100 Wien

T. +43(0)1 489 3961-0

F. +43(0)1 489 3961-7

[mail@szabo-scandic.com](mailto:mail@szabo-scandic.com)

[www.szabo-scandic.com](http://www.szabo-scandic.com)

[linkedin.com/company/szaboscandic](https://www.linkedin.com/company/szaboscandic) 

## ELA3A polyclonal antibody (A01)

Catalog # : H00010136-A01

規格 : [ 50 uL ]

List All

### Specification

**Product Description:** Mouse polyclonal antibody raised against a full-length recombinant ELA3A.

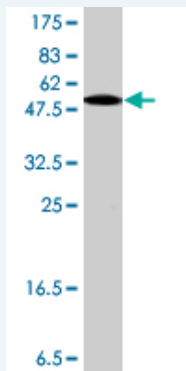
**Immunogen:** ELA3A (AAH07028, 16 a.a. ~ 270 a.a) full-length recombinant protein with GST tag.

**Sequence:** SGYGPPSSHSSSRVHGEDAVPYSWPWQVSLQYEKSGSFYHTCGGSLI  
APDWVVTAGHCISRDLTYQVVLGEYNLAVKEGPEQVIPINSEELFVHPLW  
NRSCVACGNDIALIKLSRSAQLGDAVQLASLPPAGDILPNKTPCYITGWG  
RLYTNGPLPDKLQQARLPVVDYKHCSRWNWWGSTVKKTMVCAGGYIR  
SGCNGDSGGPLNCPTEDGGWQVHGVT SFVSGFGCNFWKPTVFTRVS  
AFIDWIEETIASH

**Host:** Mouse

**Reactivity:** Human

**Quality Control Testing:** Antibody Reactive Against Recombinant Protein.



Western Blot detection against Immunogen (54.16 KDa) .

**Storage Buffer:** 50 % glycerol

**Storage Instruction:** Store at -20°C or lower. Aliquot to avoid repeated freezing and thawing.

**MSDS:** [Download](#)

**Datasheet:** [Download](#)

### Applications

Western Blot (Recombinant protein)

[Protocol Download](#)

ELISA

### Gene Information

Entrez GeneID: [10136](#)

### Application Image

Western Blot (Recombinant protein)

ELISA

**GeneBank  
Accession#:** [BC007028](#)

**Protein  
Accession#:** [AAH07028](#)

**Gene Name:** ELA3A

**Gene Alias:** ELA3

**Gene  
Description:** elastase 3A, pancreatic

**Gene Ontology:** [Hyperlink](#)

**Gene Summary:** Elastases form a subfamily of serine proteases that hydrolyze many proteins in addition to elastin. Humans have six elastase genes which encode the structurally similar proteins elastase 1, 2, 2A, 2B, 3A, and 3B. Unlike other elastases, elastase 3A has little elastolytic activity. Like most of the human elastases, elastase 3A is secreted from the pancreas as a zymogen and, like other serine proteases such as trypsin, chymotrypsin and kallikrein, it has a digestive function in the intestine. Elastase 3A preferentially cleaves proteins after alanine residues. Elastase 3A may also function in the intestinal transport and metabolism of cholesterol. Both elastase 3A and elastase 3B have been referred to as protease E and as elastase 1. [provided by RefSeq]

**Other  
Designations:** OTTHUMP00000002835,elastase 1,protease E

[服務條款](#) | [隱私權政策](#) | [著作及商標](#) | [網站地圖](#)

©2016 亞諾法生技股份有限公司 Abnova Corporation. 版權所有.