



SZABO SCANDIC

Part of Europa Biosite

Produktinformation



Forschungsprodukte & Biochemikalien



Zellkultur & Verbrauchsmaterial



Diagnostik & molekulare Diagnostik



Laborgeräte & Service

Weitere Information auf den folgenden Seiten!
See the following pages for more information!



Lieferung & Zahlungsart

siehe unsere [Liefer- und Versandbedingungen](#)

Zuschläge

- Mindermengenzuschlag
- Trockeneiszuschlag
- Gefahrgutzuschlag
- Expressversand

SZABO-SCANDIC HandelsgmbH

Quellenstraße 110, A-1100 Wien

T. +43(0)1 489 3961-0

F. +43(0)1 489 3961-7

mail@szabo-scandic.com

www.szabo-scandic.com

[linkedin.com/company/szaboscandic](https://www.linkedin.com/company/szaboscandic) 

ELA3A MaxPab mouse polyclonal antibody (B01) MaxPab®

Catalog # : H00010136-B01

規格 : [50 uL]

[List All](#)

Specification

Product Description: Mouse polyclonal antibody raised against a full-length human ELA3A protein.

Immunogen: ELA3A (NP_005738.3, 1 a.a. ~ 270 a.a) full-length human protein.

Sequence:
 MMLRLLSLLLLVAVASGYGPPSSHSSSRVHGEDAVPYSWPWQVSLQY
 EKSGSFYHTCGGSLIAPDWWVTAGHCISRDLTYQVVLGEYNLAVKEGPE
 QVIPINSEELFVHPLWNRSCVACGNDIALIKLSRSAQLGDAVQLASLPPAG
 DILPNKTPCYITGWGRLYTNGLPDKLQQRLPVVDYKHCSRWNWWGS
 TVKKTMYCAGGYIRSGCNGDSGGPLNCPTEDEGGWQVHGVTFSVSGFG
 CNFIWKPTVFTRVSAFIDWIEETIASH

Host: Mouse

Reactivity: Human

Quality Control Testing: Antibody reactive against mammalian transfected lysate.

Storage Buffer: No additive

Storage Instruction: Store at -20°C or lower. Aliquot to avoid repeated freezing and thawing.

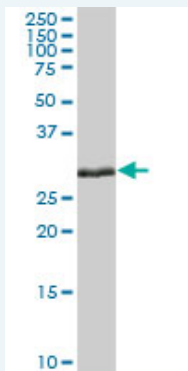
Note: For IHC and IF applications, antibody purification with Protein A will be needed prior to use.

MSDS:  [Download](#)


Datasheet:  [Download](#)

Applications

Western Blot (Tissue lysate)



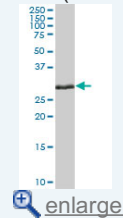
ELA3A MaxPab polyclonal antibody. Western Blot analysis of ELA3A expression in human pancreas.

 [Protocol Download](#)

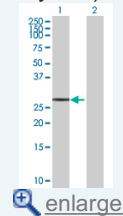
Western Blot (Transfected lysate)

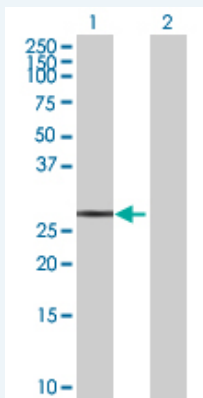
Application Image

Western Blot (Tissue lysate)



Western Blot (Transfected lysate)





Western Blot analysis of ELA3A expression in transfected 293T cell line (H00010136-T01) by ELA3A MaxPab polyclonal antibody.

Lane 1: ELA3A transfected lysate(29.7 KDa).
Lane 2: Non-transfected lysate.

 [Protocol Download](#)

Gene Information

Entrez GeneID: [10136](#)

**GeneBank
Accession#:** [NM_005747.3](#)

**Protein
Accession#:** [NP_005738.3](#)

Gene Name: ELA3A

Gene Alias: ELA3

**Gene
Description:** elastase 3A, pancreatic

Gene Ontology: [Hyperlink](#)

Gene Summary: Elastases form a subfamily of serine proteases that hydrolyze many proteins in addition to elastin. Humans have six elastase genes which encode the structurally similar proteins elastase 1, 2, 2A, 2B, 3A, and 3B. Unlike other elastases, elastase 3A has little elastolytic activity. Like most of the human elastases, elastase 3A is secreted from the pancreas as a zymogen and, like other serine proteases such as trypsin, chymotrypsin and kallikrein, it has a digestive function in the intestine. Elastase 3A preferentially cleaves proteins after alanine residues. Elastase 3A may also function in the intestinal transport and metabolism of cholesterol. Both elastase 3A and elastase 3B have been referred to as protease E and as elastase 1. [provided by RefSeq]

**Other
Designations:** OTTHUMP00000002835,elastase 1,protease E