



# SZABO SCANDIC

Part of Europa Biosite

## Produktinformation



Forschungsprodukte & Biochemikalien



Zellkultur & Verbrauchsmaterial



Diagnostik & molekulare Diagnostik



Laborgeräte & Service

Weitere Information auf den folgenden Seiten!  
See the following pages for more information!



### Lieferung & Zahlungsart

siehe unsere [Liefer- und Versandbedingungen](#)

### Zuschläge

- Mindermengenzuschlag
- Trockeneiszuschlag
- Gefahrgutzuschlag
- Expressversand

### SZABO-SCANDIC HandelsgmbH

Quellenstraße 110, A-1100 Wien

T. +43(0)1 489 3961-0

F. +43(0)1 489 3961-7

[mail@szabo-scandic.com](mailto:mail@szabo-scandic.com)

[www.szabo-scandic.com](http://www.szabo-scandic.com)

[linkedin.com/company/szaboscandic](https://www.linkedin.com/company/szaboscandic) 

## CLEC3A purified MaxPab mouse polyclonal antibody (B01P) MaxPab®

Catalog # : H00010143-B01P

規格 : [ 50 ug ]

[List All](#)

### Specification

**Product Description:** Mouse polyclonal antibody raised against a full-length human CLEC3A protein.

**Immunogen:** CLEC3A (NP\_005743.2, 1 a.a. ~ 197 a.a) full-length human protein.

**Sequence:** MAKNGLVICILVITLLLDQTTSHTSRLKARKHSKRRVRDKDGLKTQIEKLWTEVNALKEIQALQTVCLRGTKVHKKCYLASEGLKHFHEANEDCISKGGILVIPRNSDEINALQDYGKRSLPGVNDFWLGINDMVTEGKFVDVNGIAISFLNWDRAQPNGGKRENCVLFSSQAQGKWSDEACRSSKRYICEFTIPK

**Host:** Mouse

**Reactivity:** Human

**Quality Control Testing:** Antibody reactive against mammalian transfected lysate.

**Storage Buffer:** In 1x PBS, pH 7.4

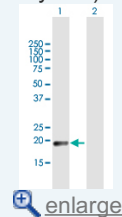
**Storage Instruction:** Store at -20°C or lower. Aliquot to avoid repeated freezing and thawing.


**MSDS:**  [Download](#)

**Datasheet:**  [Download](#)

### Application Image

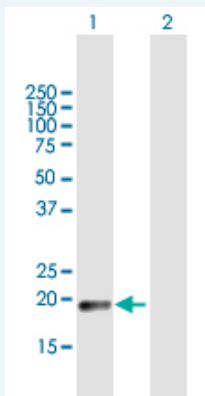
Western Blot (Transfected lysate)



 [enlarge](#)

### Applications

Western Blot (Transfected lysate)



Western Blot analysis of CLEC3A expression in transfected 293T cell line ([H00010143-T01](#)) by CLEC3A MaxPab polyclonal antibody.

Lane 1: CLEC3A transfected lysate(21.67 kDa).  
Lane 2: Non-transfected lysate.

 [Protocol Download](#)

### Gene Information

Entrez GeneID: [10143](#)

GeneBank Accession#: [NM\\_005752.2](#)

Protein Accession#: [NP\\_005743.2](#)

Gene Name: CLEC3A

Gene Alias: CLECSF1,MGC129558,MGC129559

Gene Description: C-type lectin domain family 3, member A

Gene Ontology: [Hyperlink](#)

Other Designations: C-type (calcium dependent, carbohydrate-recognition domain) lectin, superfamily member 1 (cartilage-derived),C-type lectin domain family 3 member A,C-type lectin, superfamily member 1

#### Related Disease

[Genetic Predisposition to Disease](#)

[服務條款](#) | [隱私權政策](#) | [著作及商標](#) | [網站地圖](#)

©2016 亞諾法生技股份有限公司 Abnova Corporation. 版權所有.