



SZABO SCANDIC

Part of Europa Biosite

Produktinformation



Forschungsprodukte & Biochemikalien



Zellkultur & Verbrauchsmaterial



Diagnostik & molekulare Diagnostik



Laborgeräte & Service

Weitere Information auf den folgenden Seiten!
See the following pages for more information!



Lieferung & Zahlungsart

siehe unsere [Liefer- und Versandbedingungen](#)

Zuschläge

- Mindermengenzuschlag
- Trockeneiszuschlag
- Gefahrgutzuschlag
- Expressversand

SZABO-SCANDIC HandelsgmbH

Quellenstraße 110, A-1100 Wien

T. +43(0)1 489 3961-0

F. +43(0)1 489 3961-7

mail@szabo-scandic.com

www.szabo-scandic.com

[linkedin.com/company/szaboscandic](https://www.linkedin.com/company/szaboscandic) 

ABI2 purified MaxPab rabbit polyclonal antibody (D01P) MaxPab®

Catalog # : H00010152-D01P

規格 : [100 ug]

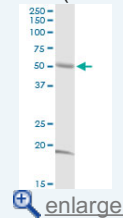
[List All](#)

Specification

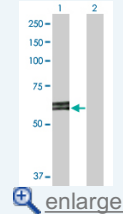
Product Description:	Rabbit polyclonal antibody raised against a full-length human ABI2 protein.
Immunogen:	ABI2 (NP_005750.4, 1 a.a. ~ 475 a.a) full-length human protein.
Sequence:	MAELQMLLEEEIPGGRRALFDSYTNLERVADYCENNYIQSADKQRALEE TKAYTTQSLASVAYLINTLANNVLQMLDIQASQLRRMESSINHISQTVDIHK EKVARREIGILTTNKNTSRTHKIIAPANLERPVYIRKPIDYTLDDIGHGVK STQNMKMGGLPRTTPTQKPPSPMSGKGLGRHSPYRTLEPVRPPV PNDYVPSPTRNMAPSQQSPVRTASVNQRNRTYSSGSSGGSHPSRSS SRENSGSGSVGVPIAVPTSPSPVFPVGHVQFYSMNRPASRHTPPTIGG SLPYRRPPSITSQTSLQNMNGGPFYSQNPVSLAPPPSILQVTPQLPLM GFVARVQENISDTPPPPPPVEEPVDFESPSPPPPEDEEEEEAAWEYSD PYAEDPPWAPRSYLEKVAIYDYTKDKEDELSFQEGAIYVIKKNDDGWY EGVMNGVTGLFPGNYVESIMHYSE
Host:	Rabbit
Reactivity:	Human
Quality Control Testing:	Antibody reactive against mammalian transfected lysate.
Storage Buffer:	In 1x PBS, pH 7.4
Storage Instruction:	Store at -20°C or lower. Aliquot to avoid repeated freezing and thawing.
MSDS:	Download
Datasheet:	Download

Application Image

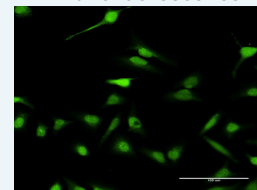
Western Blot (Tissue lysate)



Western Blot (Transfected lysate)

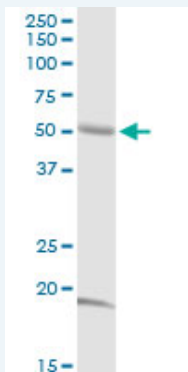


Immunofluorescence



Applications

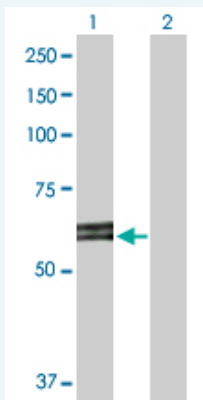
Western Blot (Tissue lysate)



ABI2 MaxPab rabbit polyclonal antibody. Western Blot analysis of ABI2 expression in human kidney.

[Protocol Download](#)

Western Blot (Transfected lysate)

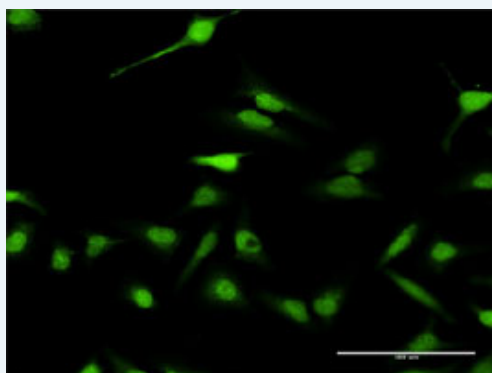


Western Blot analysis of ABI2 expression in transfected 293T cell line (H00010152-T01) by ABI2 MaxPab polyclonal antibody.

Lane 1: ABI2 transfected lysate(52.40 KDa).
Lane 2: Non-transfected lysate.

[Protocol Download](#)

Immunofluorescence



enlarge this image

Immunofluorescence of purified MaxPab antibody to ABI2 on HeLa cell. [antibody concentration 30 ug/ml]

[Protocol Download](#)

Gene Information

Entrez GeneID: [10152](#)

GeneBank [NM_005759.4](#)
Accession#:

Protein [NP_005750.4](#)
Accession#:

Gene Name: ABI2

Gene Alias: ABI-2,ABI2B,AIP-1,AbIBP3,SSH3BP2,argBP1A,argBP1B

Gene [abl interactor 2](#)
Description:

Omim ID: [606442](#)

Gene Ontology: [Hyperlink](#)

Other [abl binding protein 3,abl-interacting protein 1 \(SH3-containing protein\),abl-interactor 2,abl-interactor protein 2b,arg protein tyrosine kinase-binding protein](#)

Gene Pathway

[Regulation of actin cytoskeleton](#)

[服務條款](#) | [隱私權政策](#) | [著作及商標](#) | [網站地圖](#)

©2016 亞諾法生技股份有限公司 Abnova Corporation. 版權所有.