



SZABO SCANDIC

Part of Europa Biosite

Produktinformation



Forschungsprodukte & Biochemikalien



Zellkultur & Verbrauchsmaterial



Diagnostik & molekulare Diagnostik



Laborgeräte & Service

Weitere Information auf den folgenden Seiten!
See the following pages for more information!



Lieferung & Zahlungsart

siehe unsere [Liefer- und Versandbedingungen](#)

Zuschläge

- Mindermengenzuschlag
- Trockeneiszuschlag
- Gefahrgutzuschlag
- Expressversand

SZABO-SCANDIC HandelsgmbH

Quellenstraße 110, A-1100 Wien

T. +43(0)1 489 3961-0

F. +43(0)1 489 3961-7

mail@szabo-scandic.com

www.szabo-scandic.com

[linkedin.com/company/szaboscandic](https://www.linkedin.com/company/szaboscandic) 



PLXNC1 monoclonal antibody (M06), clone 1A12

Catalog # : H00010154-M06

規格 : [100 ug]

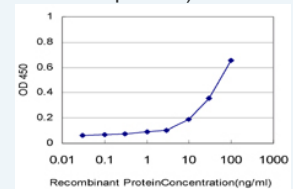
[List All](#)


Specification

Product Description:	Mouse monoclonal antibody raised against a partial recombinant PLXNC1.
Immunogen:	PLXNC1 (NP_005752, 250 a.a. ~ 348 a.a) partial recombinant protein with GST tag. MW of the GST tag alone is 26 KDa.
Sequence:	PYNYTSGAATGWPSMARIQSTEVLFQQQASLDCGHGHPDGRRLSS SLVEALDVWAGVFSAAAGEGQERRSPTTTALCLFRMSEIQARAKRVSW DFK
Host:	Mouse
Reactivity:	Human
Isotype:	IgG2b Kappa
Quality Control Testing:	Antibody Reactive Against Recombinant Protein.
Storage Buffer:	In 1x PBS, pH 7.4
Storage Instruction:	Store at -20°C or lower. Aliquot to avoid repeated freezing and thawing.
MSDS:	 Download
Datasheet:	 Download

Application Image

Sandwich ELISA (Recombinant protein)

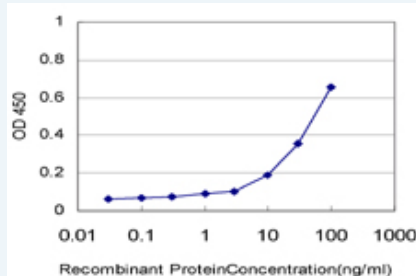


 [enlarge](#)


ELISA

Applications

Sandwich ELISA (Recombinant protein)



Detection limit for recombinant GST tagged PLXNC1 is approximately 1ng/ml as a capture antibody.

 [Protocol Download](#)

ELISA

Gene Information

Entrez GeneID: [10154](#)

GeneBank [NM_005761](#)

Accession#:

Protein [NP_005752](#)

Accession#:

Gene Name: [PLXNC1](#)

Gene Alias: [CD232,PLXN-C1,VESPR](#)

Gene [plexin C1](#)

Description:

Omim ID: [604259](#)

Gene Ontology: [Hyperlink](#)

Other [plexin \(semaphorin receptor\),receptor for virally-encoded semaphorin](#)

Designations:

Gene Pathway

[Axon guidance](#)

Related Disease

[Genetic Predisposition to Disease Parkinson Disease Parkinson disease](#)

[服務條款](#) | [隱私權政策](#) | [著作及商標](#) | [網站地圖](#)

©2016 亞諾法生技股份有限公司 Abnova Corporation. 版權所有.