



SZABO SCANDIC

Part of Europa Biosite

Produktinformation



Forschungsprodukte & Biochemikalien



Zellkultur & Verbrauchsmaterial



Diagnostik & molekulare Diagnostik



Laborgeräte & Service

Weitere Information auf den folgenden Seiten!
See the following pages for more information!



Lieferung & Zahlungsart

siehe unsere [Liefer- und Versandbedingungen](#)

Zuschläge

- Mindermengenzuschlag
- Trockeneiszuschlag
- Gefahrgutzuschlag
- Expressversand

SZABO-SCANDIC HandelsgmbH

Quellenstraße 110, A-1100 Wien

T. +43(0)1 489 3961-0

F. +43(0)1 489 3961-7

mail@szabo-scandic.com

www.szabo-scandic.com

[linkedin.com/company/szaboscandic](https://www.linkedin.com/company/szaboscandic) 

TRIM28 monoclonal antibody (M02), clone 1D11

Catalog # : H00010155-M02

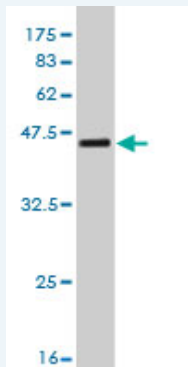
規格 : [100 ug]

[List All](#)

Specification

Product Description:	Mouse monoclonal antibody raised against a partial recombinant TRIM28.
Immunogen:	TRIM28 (AAH04978, 379 a.a. ~ 524 a.a) partial recombinant protein with GST tag. MW of the GST tag alone is 26 KDa.
Sequence:	IVDPVEPHGEMKFQWDLNAWTKSAEAFGKVAERPSTNSTGPAPMAPP RAPGPLSKQGSQPMQEVQEGYGFSGDDPYSSAEPHVSQVSRSR GEGEVSLMRKVPRVSLERLDLTLTADSQPPVFKVFPSTTEDYNLIV R
Host:	Mouse
Reactivity:	Human, Mouse, Rat
Isotype:	IgG2a Kappa

Quality Control Testing: Antibody Reactive Against Recombinant Protein.



Western Blot detection against Immunogen (41.69 KDa) .

Storage Buffer: In 1x PBS, pH 7.4

Storage Instruction: Store at -20°C or lower. Aliquot to avoid repeated freezing and thawing.

MSDS: [Download](#)

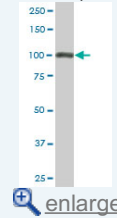
Datasheet: [Download](#)

Applications

Western Blot (Cell lysate)

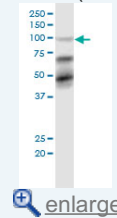
Application Image

Western Blot (Cell lysate)



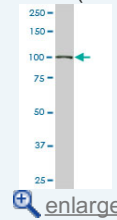
[enlarge](#)

Western Blot (Cell lysate)



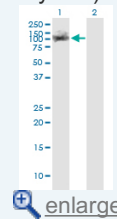
[enlarge](#)

Western Blot (Cell lysate)



[enlarge](#)

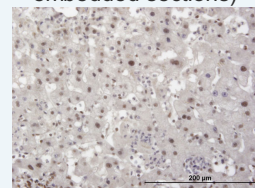
Western Blot (Transfected lysate)



[enlarge](#)

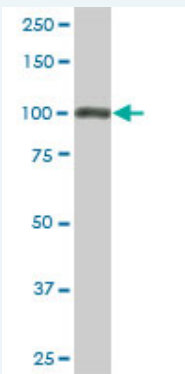
Western Blot (Recombinant protein)

Immunohistochemistry
(Formalin/PFA-fixed paraffin-embedded sections)



[enlarge](#)

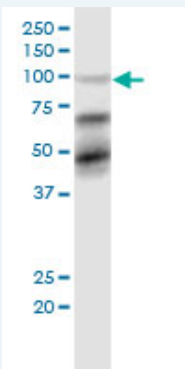
ELISA



TRIM28 monoclonal antibody (M02), clone 1D11. Western Blot analysis of TRIM28 expression in PC-12 (Cat # L012V1).

 [Protocol Download](#)

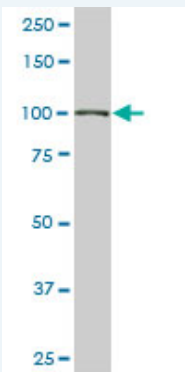
Western Blot (Cell lysate)



TRIM28 monoclonal antibody (M02), clone 1D11. Western Blot analysis of TRIM28 expression in MCF-7.

 [Protocol Download](#)

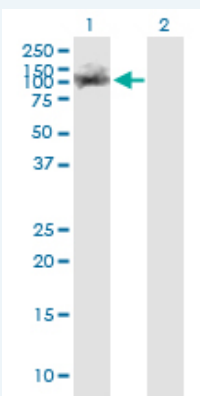
Western Blot (Cell lysate)



TRIM28 monoclonal antibody (M02), clone 1D11. Western Blot analysis of TRIM28 expression in NIH/3T3 (Cat # L018V1).

 [Protocol Download](#)

Western Blot (Transfected lysate)



Western Blot analysis of TRIM28 expression in transfected 293T cell line by TRIM28 monoclonal antibody (M02), clone 1D11.

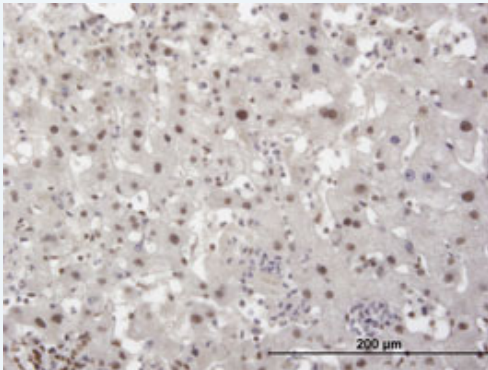
Lane 1: TRIM28 transfected lysate (Predicted MW: 88.5 KDa).
Lane 2: Non-transfected lysate.

 [Protocol Download](#)

Western Blot (Recombinant protein)

 [Protocol Download](#)

Immunohistochemistry (Formalin/PFA-fixed paraffin-embedded sections)



 [enlarge this image](#)

Immunoperoxidase of monoclonal antibody to TRIM28 on formalin-fixed paraffin-embedded human liver. [antibody concentration 3 ug/ml]

 [Protocol Download](#)

ELISA

Gene Information

Entrez GeneID: [10155](#)

GeneBank [BC004978](#)
Accession#:

Protein [AAH04978](#)
Accession#:

Gene Name: TRIM28

Gene Alias: FLJ29029,KAP1,RNF96,TF1B,TIF1B

Gene Description: tripartite motif-containing 28

Omim ID: [601742](#)

Gene Ontology: [Hyperlink](#)

Gene Summary: The protein encoded by this gene mediates transcriptional control by interaction with the Kruppel-associated box repression domain found in many transcription factors. The protein localizes to the nucleus and is thought to associate with specific chromatin regions. The protein is a member of the tripartite motif family. This tripartite motif includes three zinc-binding domains, a RING, a B-box type 1 and a B-box type 2, and a coiled-coil region. [provided by RefSeq]

Other Designations: KRAB-associated protein 1,nuclear corepressor KAP-1,transcriptional intermediary factor 1-beta,tripartite motif-containing 28 protein