



SZABO SCANDIC

Part of Europa Biosite

Produktinformation



Forschungsprodukte & Biochemikalien



Zellkultur & Verbrauchsmaterial



Diagnostik & molekulare Diagnostik



Laborgeräte & Service

Weitere Information auf den folgenden Seiten!
See the following pages for more information!



Lieferung & Zahlungsart

siehe unsere [Liefer- und Versandbedingungen](#)

Zuschläge

- Mindermengenzuschlag
- Trockeneiszuschlag
- Gefahrgutzuschlag
- Expressversand

SZABO-SCANDIC HandelsgmbH

Quellenstraße 110, A-1100 Wien

T. +43(0)1 489 3961-0

F. +43(0)1 489 3961-7

mail@szabo-scandic.com

www.szabo-scandic.com

[linkedin.com/company/szaboscandic](https://www.linkedin.com/company/szaboscandic) 

WASF2 polyclonal antibody (A01)

Catalog # : H00010163-A01

規格 : [50 uL]

List All

Specification

Product Description: Mouse polyclonal antibody raised against a partial recombinant WASF2.

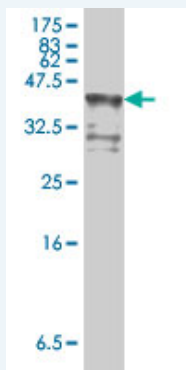
Immunogen: WASF2 (NP_008921, 73 a.a. ~ 172 a.a) partial recombinant protein with GST tag.

Sequence: DRLQVKVTQLDPKKEEVSLQGINTRKAFRSSTIQDQKLFDRNSLPVPVLE
TYNTCDT PPPLNNLTPYRDDGKEALKFYTDPSYFFDLWKEKMLQDTKDI
M

Host: Mouse

Reactivity: Human

Quality Control Testing: Antibody Reactive Against Recombinant Protein.



Western Blot detection against Immunogen (37.11 kDa) .

Storage Buffer: 50 % glycerol

Storage Instruction: Store at -20°C or lower. Aliquot to avoid repeated freezing and thawing.

MSDS: [Download](#)

Datasheet: [Download](#)

Applications

Western Blot (Recombinant protein)

[Protocol Download](#)

ELISA

Gene Information

Entrez GeneID: [10163](#)

GeneBank Accession#: [NM_006990](#)

Application Image

Western Blot (Recombinant protein)

ELISA

Protein [NP_008921](#)

Accession#:

Gene Name: WASF2

Gene Alias: SCAR2,WAVE2,dJ393P12.2

Gene Description: WAS protein family, member 2

Omim ID: [605875](#)

Gene Ontology: [Hyperlink](#)

Gene Summary: This gene encodes a member of the Wiskott-Aldrich syndrome protein family. The gene product is a protein that forms a multiprotein complex that links receptor kinases and actin. Binding to actin occurs through a C-terminal verprolin homology domain in all family members. The multiprotein complex serves to transduce signals that involve changes in cell shape, motility or function. The published map location (PMID:10381382) has been changed based on recent genomic sequence comparisons, which indicate that the expressed gene is located on chromosome 1, and a pseudogene may be located on chromosome X. [provided by RefSeq]

Other Designations: IMD2,OTTHUMP0000003471,WASP family Verprolin-homologous protein 2,suppressor of cyclic-AMP receptor (WASP-family)

Gene Pathway

[Adherens junction](#) [Fc gamma R-mediated phagocytosis](#) [Regulation of actin cytoskeleton](#)

[服務條款](#) | [隱私權政策](#) | [著作及商標](#) | [網站地圖](#)

©2016 亞諾法生技股份有限公司 Abnova Corporation. 版權所有.