



# SZABO SCANDIC

Part of Europa Biosite

## Produktinformation



Forschungsprodukte & Biochemikalien



Zellkultur & Verbrauchsmaterial



Diagnostik & molekulare Diagnostik



Laborgeräte & Service

Weitere Information auf den folgenden Seiten!  
See the following pages for more information!



### Lieferung & Zahlungsart

siehe unsere [Liefer- und Versandbedingungen](#)

### Zuschläge

- Mindermengenzuschlag
- Trockeneiszuschlag
- Gefahrgutzuschlag
- Expressversand

### SZABO-SCANDIC HandelsgmbH

Quellenstraße 110, A-1100 Wien

T. +43(0)1 489 3961-0

F. +43(0)1 489 3961-7

[mail@szabo-scandic.com](mailto:mail@szabo-scandic.com)

[www.szabo-scandic.com](http://www.szabo-scandic.com)

[linkedin.com/company/szaboscandic](https://www.linkedin.com/company/szaboscandic) 



## WASF2 monoclonal antibody (M01), clone 1F7

Catalog # : H00010163-M01

規格 : [ 100 ug ]

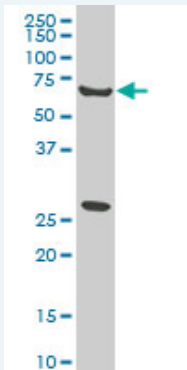
[List All](#)

### Specification

<b>Product Description:</b>	Mouse monoclonal antibody raised against a partial recombinant WASF2.
<b>Immunogen:</b>	WASF2 (NP_008921, 73 a.a. ~ 172 a.a) partial recombinant protein with GST tag. MW of the GST tag alone is 26 KDa.
<b>Sequence:</b>	DRLQVKVTQLDPKEEEVSLQGINTRKAFRSSTIQDQKLFDRNSLPVPVLE TYNTCDTPPPLNNLTPYRDDGKEALKFYTDPSYFFDLWKEKMLQDTKDI M
<b>Host:</b>	Mouse
<b>Reactivity:</b>	Human
<b>Isotype:</b>	IgG2b Kappa
<b>Quality Control Testing:</b>	Antibody Reactive Against Recombinant Protein.
<b>Storage Buffer:</b>	In 1x PBS, pH 7.4
<b>Storage Instruction:</b>	Store at -20°C or lower. Aliquot to avoid repeated freezing and thawing.
<b>MSDS:</b>	 <a href="#">Download</a>
<b>Datasheet:</b>	 <a href="#">Download</a>

### Applications

#### Western Blot (Cell lysate)



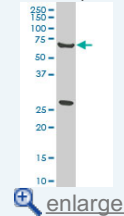
WASF2 monoclonal antibody (M01), clone 1F7. Western Blot analysis of WASF2 expression in HeLa ( Cat # L013V1 ).

 [Protocol Download](#)

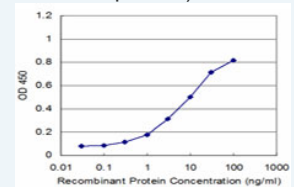
#### Sandwich ELISA (Recombinant protein)


### Application Image

#### Western Blot (Cell lysate)

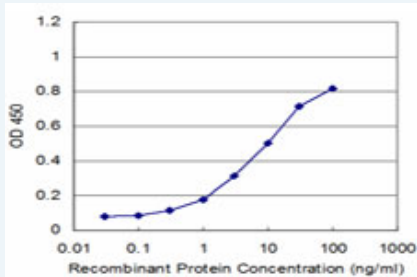


#### Sandwich ELISA (Recombinant protein)



 [enlarge](#)

ELISA



Detection limit for recombinant GST tagged WASF2 is approximately 0.3ng/ml as a capture antibody.

 [Protocol Download](#)

## ELISA

### Gene Information

**Entrez GeneID:** [10163](#)

**GeneBank** [NM\\_006990](#)

**Accession#:**

**Protein** [NP\\_008921](#)

**Accession#:**

**Gene Name:** WASF2

**Gene Alias:** SCAR2,WAVE2,dJ393P12.2

**Gene Description:** WAS protein family, member 2

**Omim ID:** [605875](#)

**Gene Ontology:** [Hyperlink](#)

**Gene Summary:** This gene encodes a member of the Wiskott-Aldrich syndrome protein family. The gene product is a protein that forms a multiprotein complex that links receptor kinases and actin. Binding to actin occurs through a C-terminal verprolin homology domain in all family members. The multiprotein complex serves to transduce signals that involve changes in cell shape, motility or function. The published map location (PMID:10381382) has been changed based on recent genomic sequence comparisons, which indicate that the expressed gene is located on chromosome 1, and a pseudogene may be located on chromosome X. [provided by RefSeq]

**Other Designations:** IMD2,OTTHUMP00000003471,WASP family Verprolin-homologous protein 2,suppressor of cyclic-AMP receptor (WASP-family)

### Gene Pathway

[Adherens junction](#) [Fc gamma R-mediated phagocytosis](#) [Regulation of actin cytoskeleton](#)