



# SZABO SCANDIC

Part of Europa Biosite

## Produktinformation



Forschungsprodukte & Biochemikalien



Zellkultur & Verbrauchsmaterial



Diagnostik & molekulare Diagnostik



Laborgeräte & Service

Weitere Information auf den folgenden Seiten!  
See the following pages for more information!



### Lieferung & Zahlungsart

siehe unsere [Liefer- und Versandbedingungen](#)

### Zuschläge

- Mindermengenzuschlag
- Trockeneiszuschlag
- Gefahrgutzuschlag
- Expressversand

### SZABO-SCANDIC HandelsgmbH

Quellenstraße 110, A-1100 Wien

T. +43(0)1 489 3961-0

F. +43(0)1 489 3961-7

[mail@szabo-scandic.com](mailto:mail@szabo-scandic.com)

[www.szabo-scandic.com](http://www.szabo-scandic.com)

[linkedin.com/company/szaboscandic](https://www.linkedin.com/company/szaboscandic) 

## WASF2 monoclonal antibody (M02), clone 8E7

Catalog # : H00010163-M02

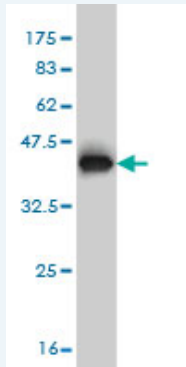
規格 : [ 100 ug ]

[List All](#)

### Specification

<b>Product Description:</b>	Mouse monoclonal antibody raised against a partial recombinant WASF2.
<b>Immunogen:</b>	WASF2 (NP_008921, 73 a.a. ~ 172 a.a) partial recombinant protein with GST tag. MW of the GST tag alone is 26 KDa.
<b>Sequence:</b>	DRLQVKVTQLDPKKEEVSLQGINTRKAFRSSTIQDQKLFDRNSLPVPVLE TYNTCDTTPPLNLTTPYRDDGKEALKFYTDPSYFFDLWKEKMLQDTKDI M
<b>Host:</b>	Mouse
<b>Reactivity:</b>	Human
<b>Isotype:</b>	IgG2b Kappa

**Quality Control Testing:** Antibody Reactive Against Recombinant Protein.



Western Blot detection against Immunogen (36.74 KDa) .

**Storage Buffer:** In 1x PBS, pH 7.4

**Storage Instruction:** Store at -20°C or lower. Aliquot to avoid repeated freezing and thawing.

**MSDS:** [Download](#)

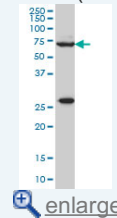
**Datasheet:** [Download](#)

### Applications

Western Blot (Cell lysate)

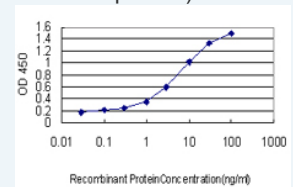
### Application Image

Western Blot (Cell lysate)

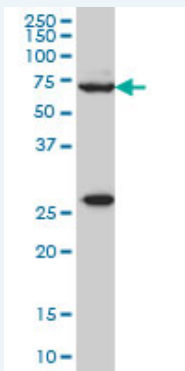


Western Blot (Recombinant protein)

Sandwich ELISA (Recombinant protein)



ELISA



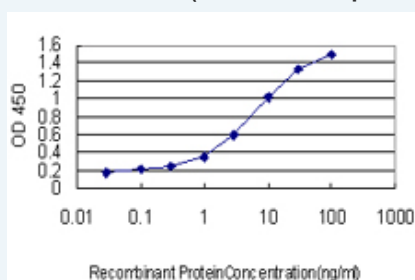
WASF2 monoclonal antibody (M02), clone 8E7 Western Blot analysis of WASF2 expression in HeLa ( Cat # L013V1 ).

[Protocol Download](#)

#### Western Blot (Recombinant protein)

[Protocol Download](#)

#### Sandwich ELISA (Recombinant protein)



Detection limit for recombinant GST tagged WASF2 is approximately 0.1ng/ml as a capture antibody.

[Protocol Download](#)

#### ELISA

#### Gene Information

Entrez GeneID: [10163](#)

GeneBank [NM\\_006990](#)

Accession#:

Protein [NP\\_008921](#)

Accession#:

Gene Name: WASF2

Gene Alias: SCAR2,WAVE2,dJ393P12.2

Gene Description: WAS protein family, member 2

Description:

Omim ID: [605875](#)

Gene Ontology: [Hyperlink](#)

**Gene Summary:** This gene encodes a member of the Wiskott-Aldrich syndrome protein family. The gene product is a protein that forms a multiprotein complex that links receptor kinases and actin. Binding to actin occurs through a C-terminal verprolin homology domain in all family members. The multiprotein complex serves to transduce signals that involve changes in cell shape, motility or function. The published map location (PMID:10381382) has been changed based on recent genomic sequence comparisons, which indicate that the expressed gene is located on chromosome 1, and a pseudogene may be located on

chromosome X. [provided by RefSeq]

---

**Other** IMD2,OTTHUMP0000003471,WASP family Verprolin-homologous  
**Designations:** protein 2,suppressor of cyclic-AMP receptor (WASP-family)

---

**Gene Pathway**

[Adherens junction](#) [Fc gamma R-mediated phagocytosis](#) [Regulation of actin cytoskeleton](#)

---

[服務條款](#) | [隱私權政策](#) | [著作及商標](#) | [網站地圖](#)

©2016 亞諾法生技股份有限公司 Abnova Corporation. 版權所有.