



# SZABO SCANDIC

Part of Europa Biosite

## Produktinformation



Forschungsprodukte & Biochemikalien



Zellkultur & Verbrauchsmaterial



Diagnostik & molekulare Diagnostik



Laborgeräte & Service

Weitere Information auf den folgenden Seiten!  
See the following pages for more information!



### Lieferung & Zahlungsart

siehe unsere [Liefer- und Versandbedingungen](#)

### Zuschläge

- Mindermengenzuschlag
- Trockeneiszuschlag
- Gefahrgutzuschlag
- Expressversand

### SZABO-SCANDIC HandelsgmbH

Quellenstraße 110, A-1100 Wien

T. +43(0)1 489 3961-0

F. +43(0)1 489 3961-7

[mail@szabo-scandic.com](mailto:mail@szabo-scandic.com)

[www.szabo-scandic.com](http://www.szabo-scandic.com)

[linkedin.com/company/szaboscandic](https://www.linkedin.com/company/szaboscandic) 

**SLC25A13 purified MaxPab mouse polyclonal antibody (B01P)** MaxPab®

Catalog # : H00010165-B01P

規格 : [ 50 ug ]

[List All](#)

**Specification**

**Product Description:** Mouse polyclonal antibody raised against a full-length human SLC25A13 protein.

**Immunogen:** SLC25A13 (NP\_055066.1, 1 a.a. ~ 675 a.a) full-length human protein.

**Sequence:**  
 MAAAKVALTKRADPAELRTIFLKYASIEKNGEFFMSPNDFVTRYLNIFGES  
 QPNPKTVELLSGVVDQTKDGLISFQEFVAFESVLCAPDALFMVAFQLFD  
 KAGKGEVTFEDVKQVFGQTTIHQHIPFNWDSEFVQLHFGKERKRHLTYA  
 EFTQFLLEIQLEHAKQAFVQRDNARTGRVTAIDFRDIMVTIRPHVLTPEVE  
 ECLVAAAGGTTSHQVSFSYFNGFNSSLNMMELIRKIYSTLAGTRKDVEVT  
 KEEFVLAQKFGQVTPMEVDILFQLADLYEPRGRMTLADIERIAPLEEGT  
 LPFNLAEAQRQKASGDSARPVLLQVAESAYRFGLSVAVGATAVYPI  
 DLVKTRMQNQIRSTGSFVGELMYKNSFDCFKKVLRYEGFFGLYRGLLPQ  
 LLGVAPEKAIKLTVNDFVRDKFMHKDGSVPLAAEILAGGCAGGSQVIFTN  
 PLEIVKIRLQVAGEITTGPRVSALSVVRDLGFFGIYKGAKACFLRDIPFSAI  
 YFPCYAHVKASFANEDGQVSPGSLLLAGAIAGMPAASLVTPADVIKTRLQ  
 VAARAGQTTYSGVIDCFRKILREEGPKALWKGAGARVFRSSPQFGVTLT  
 TYELLQRWFYIDFGGVKPMGSEVPKSRINLPAPNPDHVGGYKLAVATF  
 AGIENKFGLYLPLFKPSVSTSKAIGGGP

**Host:** Mouse

**Reactivity:** Human

**Quality Control Testing:** Antibody reactive against mammalian transfected lysate.

**Storage Buffer:** In 1x PBS, pH 7.4

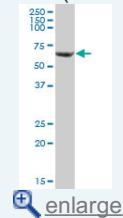
**Storage Instruction:** Store at -20°C or lower. Aliquot to avoid repeated freezing and thawing.

**MSDS:**  [Download](#)

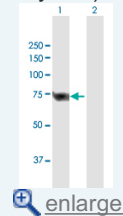
**Datasheet:**  [Download](#)

**Application Image**

Western Blot (Tissue lysate)

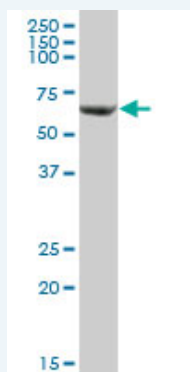


Western Blot (Transfected lysate)



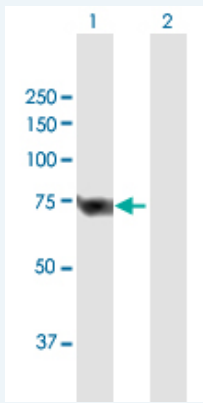
**Applications**

Western Blot (Tissue lysate)



SLC25A13 MaxPab polyclonal antibody. Western Blot analysis of SLC25A13 expression in human liver.

### Western Blot (Transfected lysate)



Western Blot analysis of SLC25A13 expression in transfected 293T cell line ([H00010165-T01](#)) by SLC25A13 MaxPab polyclonal antibody.

Lane1:SLC25A13 transfected lysate(74.25 KDa).

Lane2:Non-transfected lysate.

### Gene Information

Entrez GeneID: [10165](#)

GeneBank Accession#: [NM\\_014251.1](#)

Protein Accession#: [NP\\_055066.1](#)

Gene Name: SLC25A13

Gene Alias: ARALAR2,CITRIN,CTLN2

Gene Description: solute carrier family 25, member 13 (citrin)

Omim ID: [603471](#), [603859](#), [605814](#)

Gene Ontology: [Hyperlink](#)

**Gene Summary:** This gene is a member of the mitochondrial carrier family. The encoded protein contains four EF-hand Ca(2+) binding motifs in the N-terminal domain, and localizes to mitochondria. The protein catalyzes the exchange of aspartate for glutamate and a proton across the inner mitochondrial membrane, and is stimulated by calcium on the external side of the inner mitochondrial membrane. Mutations in this gene result in citrullinemia, type II. Multiple transcript variants encoding different isoforms have been found for this gene. [provided by RefSeq]

Other Designations: mitochondrial aspartate glutamate carrier 2

### Related Disease

[Asperger Syndrome](#) [Autistic Disorder](#) [Cholestasis](#) [Cholestasis, Intrahepatic](#) [Citrullinemia](#) [Disease Progression](#) [Genetic Predisposition to Disease](#) [Hepatitis](#) [Social Perception](#) [Tobacco Use Disorder](#)

