



SZABO SCANDIC

Part of Europa Biosite

Produktinformation



Forschungsprodukte & Biochemikalien



Zellkultur & Verbrauchsmaterial



Diagnostik & molekulare Diagnostik



Laborgeräte & Service

Weitere Information auf den folgenden Seiten!
See the following pages for more information!



Lieferung & Zahlungsart

siehe unsere [Liefer- und Versandbedingungen](#)

Zuschläge

- Mindermengenzuschlag
- Trockeneiszuschlag
- Gefahrgutzuschlag
- Expressversand

SZABO-SCANDIC HandelsgmbH

Quellenstraße 110, A-1100 Wien

T. +43(0)1 489 3961-0

F. +43(0)1 489 3961-7

mail@szabo-scandic.com

www.szabo-scandic.com

[linkedin.com/company/szaboscandic](https://www.linkedin.com/company/szaboscandic) 



SLC25A13 purified MaxPab rabbit polyclonal antibody (D01P) MaxPab®

Catalog # : H00010165-D01P

規格 : [100 ug]

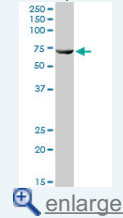
[List All](#)

Specification

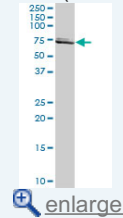
Product Description:	Rabbit polyclonal antibody raised against a full-length human SLC25A13 protein.
Immunogen:	SLC25A13 (NP_055066.1, 1 a.a. ~ 675 a.a) full-length human protein.
Sequence:	MAAAKVALTKRADPAELRTIFLKYASIEKNGEFFMSPNDFVTRYLNIFGES QPNPKTVELLSGVVDQTKDGLISFQEFVAFESVLCAPDALFMVAFQLFD KAGKGEVTFEDVKQVFGQTTIHQHIPFNWDSEFVQLHFGKERKRHLTYA EFTQFLLEIQLEHAKQAFVQRDNARTGRVTAIDFRDIMVTIRPHVLTPEVE ECLVAAAGGTTSHQVSFSYFNNGFNLLNMMELIRKIYSTLAGTRKDVEVT KEEFVLAQKFGQVTPMEVDILFQLADLYEPRGRMTLADIERIAPLEEGT LPFNLAEAQRQKASGDSARPVLLQVAESAYRFLGSGVAGAVGATAVYPI DLVKTRMQNQIRSTGSFVGELMYKNSFDCFKKVLRYEGFFGLYRGLLPQ LLGVAPEKAIKLTVNDVFRDKFMHKDGSVPLAAEILAGGCAGGSQVIFTN PLEIVKIRLQVAGEITTGPRVSALSVRDLGFFGIYKGAKACFLRDIPFSAI YFPCYAHVKASFANEDGQVSPGSLLLAGAIAGMPAASLVTPADVIKTRLQ VAARAGQTTYSGVIDCFRKILREEGPKALWKGAGARVFRSSPQFGVTLT TYELLQRWFYIDFGGVKPMGSEPVKSRINLPAPNPDHVGGYKLAVATF AGIENKFGLYLPLFKPSVSTSKAIGGGP
Host:	Rabbit
Reactivity:	Human, Mouse
Quality Control Testing:	Antibody reactive against mammalian transfected lysate.
Storage Buffer:	In 1x PBS, pH 7.4
Storage Instruction:	Store at -20°C or lower. Aliquot to avoid repeated freezing and thawing.
MSDS:	 Download
Datasheet:	 Download

Application Image

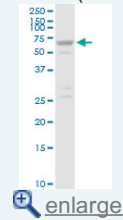
Western Blot (Tissue lysate)



Western Blot (Tissue lysate)



Western Blot (Cell lysate)

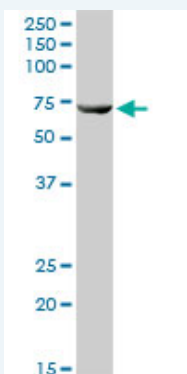


Western Blot (Transfected lysate)



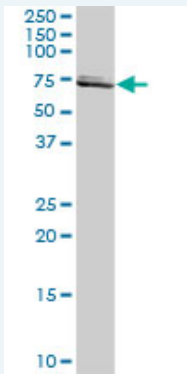
Applications

Western Blot (Tissue lysate)



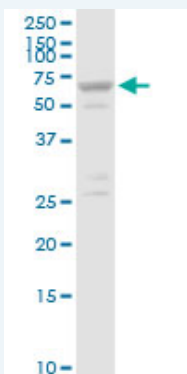
SLC25A13 MaxPab rabbit polyclonal antibody. Western Blot analysis of SLC25A13 expression in human liver.

Western Blot (Tissue lysate)



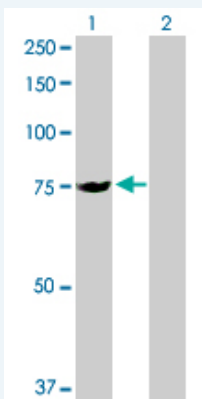
SLC25A13 MaxPab rabbit polyclonal antibody. Western Blot analysis of SLC25A13 expression in mouse liver.

Western Blot (Cell lysate)



SLC25A13 MaxPab rabbit polyclonal antibody. Western Blot analysis of SLC25A13 expression in HepG2.

Western Blot (Transfected lysate)



Western Blot analysis of SLC25A13 expression in transfected 293T cell line (H00010165-T02) by SLC25A13 MaxPab polyclonal antibody.

Lane 1: SLC25A13 transfected lysate(74.20 KDa).

Lane 2: Non-transfected lysate.

Gene Information

Entrez GeneID: [10165](#)

GeneBank [NM_014251.1](#)

Accession#:

Protein [NP_055066.1](#)

Accession#:**Gene Name:** SLC25A13**Gene Alias:** ARALAR2,CITRIN,CTLN2**Gene Description:** solute carrier family 25, member 13 (citrin)**Omim ID:** [603471](#), [603859](#), [605814](#)**Gene Ontology:** [Hyperlink](#)

Gene Summary: This gene is a member of the mitochondrial carrier family. The encoded protein contains four EF-hand Ca(2+) binding motifs in the N-terminal domain, and localizes to mitochondria. The protein catalyzes the exchange of aspartate for glutamate and a proton across the inner mitochondrial membrane, and is stimulated by calcium on the external side of the inner mitochondrial membrane. Mutations in this gene result in citrullinemia, type II. Multiple transcript variants encoding different isoforms have been found for this gene. [provided by RefSeq]

Other Designations: mitochondrial aspartate glutamate carrier 2**Related Disease**

[Asperger Syndrome](#) [Autistic Disorder](#) [Cholestasis](#) [Cholestasis, Intrahepatic](#) [Citrullinemia](#) [Disease Progression](#) [Genetic Predisposition to Disease](#) [Hepatitis](#) [Social Perception](#) [Tobacco Use Disorder](#)

[服務條款](#) | [隱私權政策](#) | [著作及商標](#) | [網站地圖](#)

©2016 亞諾法生技股份有限公司 Abnova Corporation. 版權所有.