



# SZABO SCANDIC

Part of Europa Biosite

## Produktinformation



Forschungsprodukte & Biochemikalien



Zellkultur & Verbrauchsmaterial



Diagnostik & molekulare Diagnostik



Laborgeräte & Service

Weitere Information auf den folgenden Seiten!  
See the following pages for more information!



### Lieferung & Zahlungsart

siehe unsere [Liefer- und Versandbedingungen](#)

### Zuschläge

- Mindermengenzuschlag
- Trockeneiszuschlag
- Gefahrgutzuschlag
- Expressversand

### SZABO-SCANDIC HandelsgmbH

Quellenstraße 110, A-1100 Wien

T. +43(0)1 489 3961-0

F. +43(0)1 489 3961-7

[mail@szabo-scandic.com](mailto:mail@szabo-scandic.com)

[www.szabo-scandic.com](http://www.szabo-scandic.com)

[linkedin.com/company/szaboscandic](https://www.linkedin.com/company/szaboscandic) 

## SLC25A13 monoclonal antibody (M01), clone 4F4

Catalog # : H00010165-M01

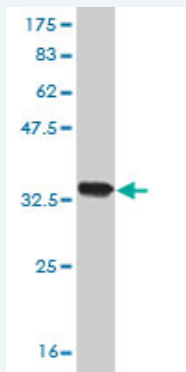
規格 : [ 100 ug ]

[List All](#)

### Specification

<b>Product Description:</b>	Mouse monoclonal antibody raised against a partial recombinant SLC25A13.
<b>Immunogen:</b>	SLC25A13 (NP_055066, 2 a.a. ~ 80 a.a) partial recombinant protein with GST tag. MW of the GST tag alone is 26 KDa.
<b>Sequence:</b>	AAAKVALTKRADPAELRTIFLKYASIEKNGEFFMSPNDFVTRYLNIFGESQ PNPKTVELLSGVWDQTKDGLISFQEFVA
<b>Host:</b>	Mouse
<b>Reactivity:</b>	Human
<b>Isotype:</b>	IgG2a Kappa

**Quality Control Testing:** Antibody Reactive Against Recombinant Protein.



Western Blot detection against Immunogen (34.43 KDa) .

**Storage Buffer:** In 1x PBS, pH 7.4

**Storage Instruction:** Store at -20°C or lower. Aliquot to avoid repeated freezing and thawing.

**MSDS:** [Download](#)

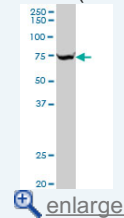
**Datasheet:** [Download](#)

### Applications

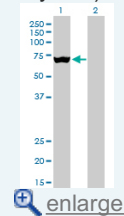
**Western Blot (Cell lysate)**

### Application Image

**Western Blot (Cell lysate)**

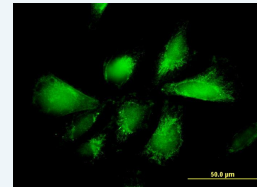


**Western Blot (Transfected lysate)**

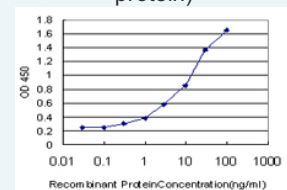


**Western Blot (Recombinant protein)**

**Immunofluorescence**

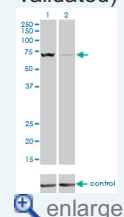


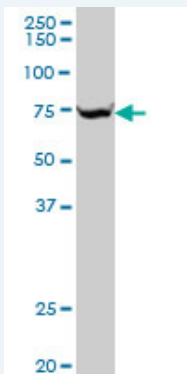
**Sandwich ELISA (Recombinant protein)**




**ELISA**

**RNAi Knockdown (Antibody validated)**

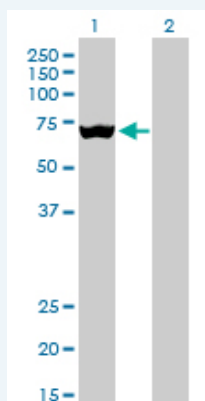




SLC25A13 monoclonal antibody (M01), clone 4F4 Western Blot analysis of SLC25A13 expression in HepG2 ( Cat # L019V1 ).

 [Protocol Download](#)

#### Western Blot (Transfected lysate)



Western Blot analysis of SLC25A13 expression in transfected 293T cell line by SLC25A13 monoclonal antibody (M01), clone 4F4.

Lane 1: SLC25A13 transfected lysate(74.2 KDa).

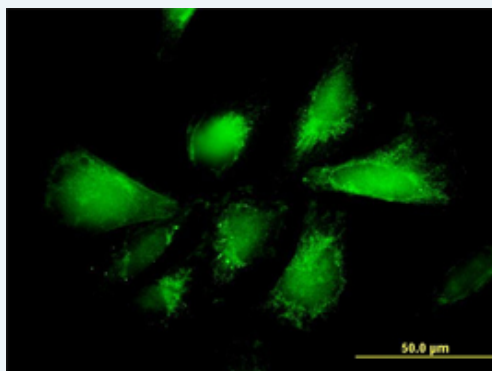
Lane 2: Non-transfected lysate.


 [Protocol Download](#)

#### Western Blot (Recombinant protein)

 [Protocol Download](#)

#### Immunofluorescence

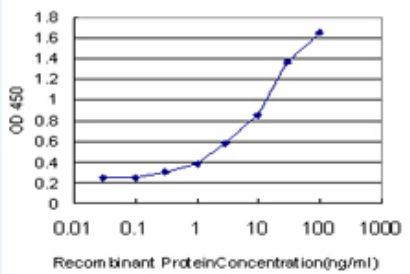


 [enlarge this image](#)

Immunofluorescence of monoclonal antibody to SLC25A13 on HepG2 cell. [antibody concentration 10 ug/ml]

 [Protocol Download](#)

#### Sandwich ELISA (Recombinant protein)

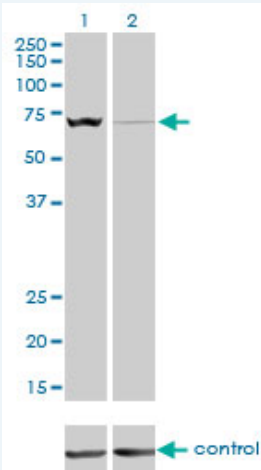


Detection limit for recombinant GST tagged SLC25A13 is approximately 0.3ng/ml as a capture antibody.

[Protocol Download](#)

## ELISA

### RNAi Knockdown (Antibody validated)



Western blot analysis of SLC25A13 over-expressed 293 cell line, cotransfected with SLC25A13 Validated Chimera RNAi ( Cat # H00010165-R01V ) (Lane 2) or non-transfected control (Lane 1). Blot probed with SLC25A13 monoclonal antibody (M01), clone 4F4 (Cat # H00010165-M01 ). GAPDH ( 36.1 kDa ) used as specificity and loading control.

[Protocol Download](#)

## Gene Information

**Entrez GeneID:** [10165](#)

**GeneBank** [NM\\_014251](#)

**Accession#:**

**Protein** [NP\\_055066](#)

**Accession#:**

**Gene Name:** SLC25A13

**Gene Alias:** ARALAR2,CITRIN,CTLN2

**Gene Description:** solute carrier family 25, member 13 (citrin)

**Omim ID:** [603471](#), [603859](#), [605814](#)

**Gene Ontology:** [Hyperlink](#)

**Gene Summary:** This gene is a member of the mitochondrial carrier family. The encoded protein contains four EF-hand Ca(2+) binding motifs in the N-terminal domain, and localizes to mitochondria. The protein catalyzes the exchange of aspartate for glutamate and a proton across the inner mitochondrial membrane, and is stimulated by calcium on the external side of the inner mitochondrial membrane. Mutations in this gene result in citrullinemia, type II. Multiple transcript variants encoding different

isoforms have been found for this gene. [provided by RefSeq

**Other** mitochondrial aspartate glutamate carrier 2  
**Designations:**

**Related Disease**

Asperger Syndrome Autistic Disorder Cholestasis Cholestasis, Intrahepatic Citrullinemia  
Disease Progression Genetic Predisposition to Disease Hepatitis Social Perception  
Tobacco Use Disorder

[服務條款](#) | [隱私權政策](#) | [著作及商標](#) | [網站地圖](#)

©2016 亞諾法生技股份有限公司 Abnova Corporation. 版權所有.