



# SZABO SCANDIC

Part of Europa Biosite

## Produktinformation



Forschungsprodukte & Biochemikalien



Zellkultur & Verbrauchsmaterial



Diagnostik & molekulare Diagnostik



Laborgeräte & Service

Weitere Information auf den folgenden Seiten!  
See the following pages for more information!



### Lieferung & Zahlungsart

siehe unsere [Liefer- und Versandbedingungen](#)

### Zuschläge

- Mindermengenzuschlag
- Trockeneiszuschlag
- Gefahrgutzuschlag
- Expressversand

### SZABO-SCANDIC HandelsgmbH

Quellenstraße 110, A-1100 Wien

T. +43(0)1 489 3961-0

F. +43(0)1 489 3961-7

[mail@szabo-scandic.com](mailto:mail@szabo-scandic.com)

[www.szabo-scandic.com](http://www.szabo-scandic.com)

[linkedin.com/company/szaboscandic](https://www.linkedin.com/company/szaboscandic) 



**PSME3 purified MaxPab mouse polyclonal antibody (B01P)** MaxPab®

Catalog # : H00010197-B01P

規格 : [ 50 ug ]

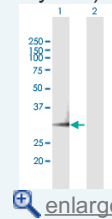
[List All](#)


**Specification**

<b>Product Description:</b>	Mouse polyclonal antibody raised against a full-length human PSME3 protein.
<b>Immunogen:</b>	PSME3 (AAH01423.1, 1 a.a. ~ 254 a.a) full-length human protein.
<b>Sequence:</b>	MASLLKVDQEVKLVDSFRERITSEAEDLVANFFPKLLELDSFLKEPILNI HDLTQIHSDVNLVPDPILLTNSHDGLDGPTYKKRRLDECEAFQGTKVF VMPNGMLKSNQQLVDIIEKVKPEIRLLIEKCNVTKMWWQLLIPRIEDGNNFG VSIQEETVAELRTVSEEAASYLDQISRYITRAKLVSKIAPHYVEDYRRTV TEIDEKEYISLRLIISLRNQYVTLHDMILKNIEKIKRPRSSNAETLY
<b>Host:</b>	Mouse
<b>Reactivity:</b>	Human
<b>Quality Control Testing:</b>	Antibody reactive against mammalian transfected lysate.
<b>Storage Buffer:</b>	In 1x PBS, pH 7.4
<b>Storage Instruction:</b>	Store at -20°C or lower. Aliquot to avoid repeated freezing and thawing.
<b>MSDS:</b>	 <a href="#">Download</a>
<b>Datasheet:</b>	 <a href="#">Download</a>

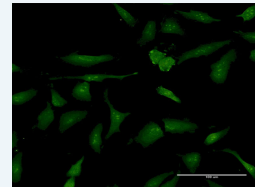
**Application Image**


Western Blot (Transfected lysate)



 [enlarge](#)

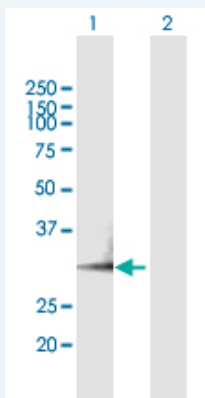
Immunofluorescence



 [enlarge](#)

**Applications**

**Western Blot (Transfected lysate)**



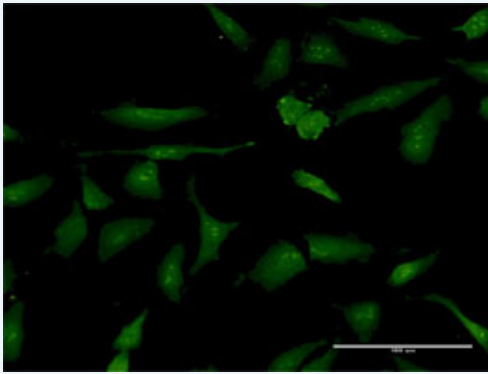
Western Blot analysis of PSME3 expression in transfected 293T cell line ([H00010197-T01](#)) by PSME3 MaxPab polyclonal antibody.

Lane 1: PSME3 transfected lysate(28.05 KDa).

Lane 2: Non-transfected lysate.

 [Protocol Download](#)

**Immunofluorescence**



[enlarge this image](#)

Immunofluorescence of purified MaxPab antibody to PSME3 on HeLa cell. [antibody concentration 30 ug/ml]

 [Protocol Download](#)

## Gene Information

**Entrez GeneID:** [10197](#)

**GeneBank  
Accession#:** [BC001423.1](#)

**Protein  
Accession#:** [AAH01423.1](#)

**Gene Name:** PSME3

**Gene Alias:** Ki,PA28-gamma,PA28G,REG-GAMMA

**Gene  
Description:** proteasome (prosome, macropain) activator subunit 3 (PA28 gamma; Ki)

**Omim ID:** [605129](#)

**Gene Ontology:** [Hyperlink](#)

**Gene Summary:** The 26S proteasome is a multicatalytic proteinase complex with a highly ordered structure composed of 2 complexes, a 20S core and a 19S regulator. The 20S core is composed of 4 rings of 28 non-identical subunits; 2 rings are composed of 7 alpha subunits and 2 rings are composed of 7 beta subunits. The 19S regulator is composed of a base, which contains 6 ATPase subunits and 2 non-ATPase subunits, and a lid, which contains up to 10 non-ATPase subunits. Proteasomes are distributed throughout eukaryotic cells at a high concentration and cleave peptides in an ATP/ubiquitin-dependent process in a non-lysosomal pathway. An essential function of a modified proteasome, the immunoproteasome, is the processing of class I MHC peptides. The immunoproteasome contains an alternate regulator, referred to as the 11S regulator or PA28, that replaces the 19S regulator. Three subunits (alpha, beta and gamma) of the 11S regulator have been identified. This gene encodes the gamma subunit of the 11S regulator. Six gamma subunits combine to form a homohexameric ring. Two transcript variants encoding different isoforms have been identified. [provided by RefSeq]

**Other  
Designations:** 11S regulator complex gamma subunit,Ki antigen,Ki nuclear autoantigen,activator of multicatalytic protease subunit 3,proteasome activator 28-gamma,proteasome activator subunit 3

## Gene Pathway

[Antigen processing and presentation Proteasome](#)

