



# SZABO SCANDIC

Part of Europa Biosite

## Produktinformation



Forschungsprodukte & Biochemikalien



Zellkultur & Verbrauchsmaterial



Diagnostik & molekulare Diagnostik



Laborgeräte & Service

Weitere Information auf den folgenden Seiten!  
See the following pages for more information!



### Lieferung & Zahlungsart

siehe unsere [Liefer- und Versandbedingungen](#)

### Zuschläge

- Mindermengenzuschlag
- Trockeneiszuschlag
- Gefahrgutzuschlag
- Expressversand

### SZABO-SCANDIC HandelsgmbH

Quellenstraße 110, A-1100 Wien

T. +43(0)1 489 3961-0

F. +43(0)1 489 3961-7

[mail@szabo-scandic.com](mailto:mail@szabo-scandic.com)

[www.szabo-scandic.com](http://www.szabo-scandic.com)

[linkedin.com/company/szaboscandic](https://www.linkedin.com/company/szaboscandic) 



# MPHOSPH6 MaxPab mouse polyclonal antibody (B01) MaxPab®

Catalog # : H00010200-B01

規格 : [ 50 uL ]

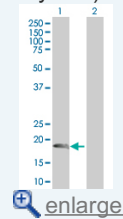
[List All](#)

## Specification

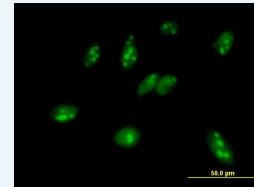
<b>Product Description:</b>	Mouse polyclonal antibody raised against a full-length human MPHOSPH6 protein.
<b>Immunogen:</b>	MPHOSPH6 (NP_005783, 1 a.a. ~ 160 a.a) full-length human protein.
<b>Sequence:</b>	MAAERKTKLSKNLLRMKFMQRGLDSETKKQLEEEKIIIEEHWYLDLPE LKEKESFIIIEEQSFLLEDLLYGRMSFRGFNPEVEKLMQMNAKHKAEEV EDETVELDVSDEEMARRYETLVGTIGKKFARKRDHANYEEDENGDITPIK AKKMFLKPQD
<b>Host:</b>	Mouse
<b>Reactivity:</b>	Human
<b>Quality Control Testing:</b>	Antibody reactive against mammalian transfected lysate.
<b>Storage Buffer:</b>	No additive
<b>Storage Instruction:</b>	Store at -20°C or lower. Aliquot to avoid repeated freezing and thawing.
<b>Note:</b>	For IHC and IF applications, antibody purification with Protein A will be needed prior to use.
<b>MSDS:</b>	 <a href="#">Download</a>
<b>Datasheet:</b>	 <a href="#">Download</a>

## Application Image

Western Blot (Transfected lysate)

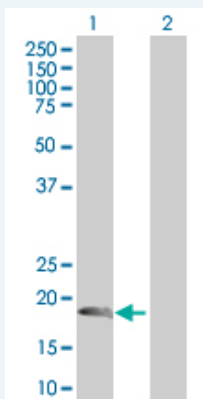


Immunofluorescence



## Applications


### Western Blot (Transfected lysate)



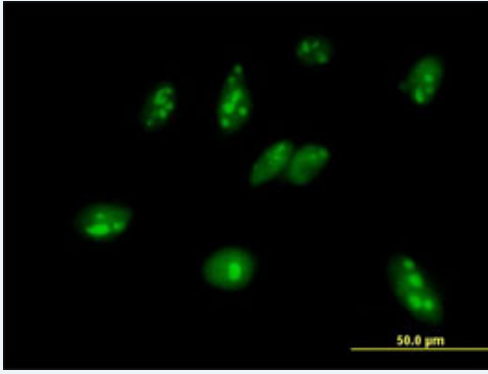
Western Blot analysis of MPHOSPH6 expression in transfected 293T cell line (H00010200-T01) by MPHOSPH6 MaxPab polyclonal antibody.

Lane 1: MPHOSPH6 transfected lysate(17.6 KDa).

Lane 2: Non-transfected lysate.


 [Protocol Download](#)

## Immunofluorescence



[enlarge this image](#)

Immunofluorescence of purified MaxPab antibody to MPHOSPH6 on HeLa cell. [antibody concentration 10 ug/ml]

 [Protocol Download](#)

---

## Gene Information

**Entrez GeneID:** [10200](#)

**GeneBank  
Accession#:** [NM\\_005792](#)

**Protein  
Accession#:** [NP\\_005783](#)

**Gene Name:** MPHOSPH6

**Gene Alias:** MPP,MPP-6,MPP6

**Gene  
Description:** M-phase phosphoprotein 6

**Omim ID:** [605500](#)

**Gene Ontology:** [Hyperlink](#)

**Other  
Designations:** -

---

## Gene Pathway

[RNA degradation](#)

---

## Related Disease

[Disease Progression](#) [Disease Susceptibility](#) [HIV Infections](#) [Tobacco Use Disorder](#)

---

[服務條款](#) | [隱私權政策](#) | [著作及商標](#) | [網站地圖](#)

©2016 亞諾法生技股份有限公司 Abnova Corporation. 版權所有.