



SZABO SCANDIC

Part of Europa Biosite

Produktinformation



Forschungsprodukte & Biochemikalien



Zellkultur & Verbrauchsmaterial



Diagnostik & molekulare Diagnostik



Laborgeräte & Service

Weitere Information auf den folgenden Seiten!
See the following pages for more information!



Lieferung & Zahlungsart

siehe unsere [Liefer- und Versandbedingungen](#)

Zuschläge

- Mindermengenzuschlag
- Trockeneiszuschlag
- Gefahrgutzuschlag
- Expressversand

SZABO-SCANDIC HandelsgmbH

Quellenstraße 110, A-1100 Wien

T. +43(0)1 489 3961-0

F. +43(0)1 489 3961-7

mail@szabo-scandic.com

www.szabo-scandic.com

[linkedin.com/company/szaboscandic](https://www.linkedin.com/company/szaboscandic) 



MPHOSPH6 purified MaxPab mouse polyclonal antibody (B01P) MaxPab®

Catalog # : H00010200-B01P

規格 : [50 ug]

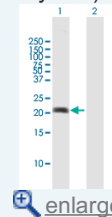
[List All](#)


Specification

Product Description:	Mouse polyclonal antibody raised against a full-length human MPHOSPH6 protein.
Immunogen:	MPHOSPH6 (AAH31017.1, 1 a.a. ~ 160 a.a) full-length human protein.
Sequence:	MAAERKTKLSKNLLRMKFMQRGLDSETKKQLEEEKKIIEEHWYLDLPE LKEKESFIIIEEQSFLLEDLLYGRMSFRGFNPEVEKLMQMNAKHKAEEV EDETVELDVSDEEMARRYETLVGTIGKKFARKRDHANYEEDENGDITPIK AKKMFLKPQD
Host:	Mouse
Reactivity:	Human
Quality Control Testing:	Antibody reactive against mammalian transfected lysate.
Storage Buffer:	In 1x PBS, pH 7.4
Storage Instruction:	Store at -20°C or lower. Aliquot to avoid repeated freezing and thawing.
MSDS:	 Download
Datasheet:	 Download

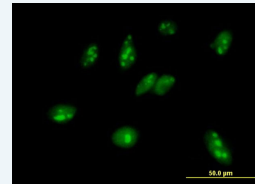
Application Image

Western Blot (Transfected lysate)



 [enlarge](#)

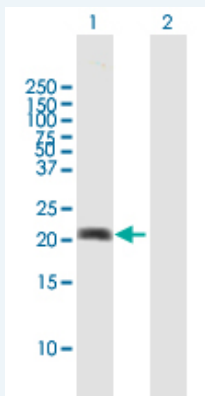
Immunofluorescence



 [enlarge](#)

Applications

Western Blot (Transfected lysate)

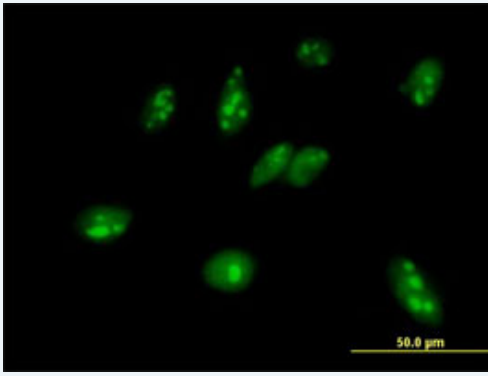


Western Blot analysis of MPHOSPH6 expression in transfected 293T cell line ([H00010200-T01](#)) by MPHOSPH6 MaxPab polyclonal antibody.

Lane 1: MPHOSPH6 transfected lysate(17.6 KDa).
Lane 2: Non-transfected lysate.

 [Protocol Download](#)

Immunofluorescence



[enlarge this image](#)

Immunofluorescence of purified MaxPab antibody to MPHOSPH6 on HeLa cell. [antibody concentration 10 ug/ml]

 [Protocol Download](#)

Gene Information

Entrez GeneID: [10200](#)

**GeneBank
Accession#:** [NM_005792](#)

**Protein
Accession#:** [AAH31017.1](#)

Gene Name: MPHOSPH6

Gene Alias: MPP,MPP-6,MPP6

**Gene
Description:** M-phase phosphoprotein 6

Omim ID: [605500](#)

Gene Ontology: [Hyperlink](#)

**Other
Designations:** -

Gene Pathway

[RNA degradation](#)

Related Disease

[Disease Progression](#) [Disease Susceptibility](#) [HIV Infections](#) [Tobacco Use Disorder](#)

[服務條款](#) | [隱私權政策](#) | [著作及商標](#) | [網站地圖](#)

©2016 亞諾法生技股份有限公司 Abnova Corporation. 版權所有.