



SZABO SCANDIC

Part of Europa Biosite

Produktinformation



Forschungsprodukte & Biochemikalien



Zellkultur & Verbrauchsmaterial



Diagnostik & molekulare Diagnostik



Laborgeräte & Service

Weitere Information auf den folgenden Seiten!
See the following pages for more information!



Lieferung & Zahlungsart

siehe unsere [Liefer- und Versandbedingungen](#)

Zuschläge

- Mindermengenzuschlag
- Trockeneiszuschlag
- Gefahrgutzuschlag
- Expressversand

SZABO-SCANDIC HandelsgmbH

Quellenstraße 110, A-1100 Wien

T. +43(0)1 489 3961-0

F. +43(0)1 489 3961-7

mail@szabo-scandic.com

www.szabo-scandic.com

[linkedin.com/company/szaboscandic](https://www.linkedin.com/company/szaboscandic) 

MPHOSPH6 monoclonal antibody (M01), clone 1D8-2A8

Catalog # : H00010200-M01

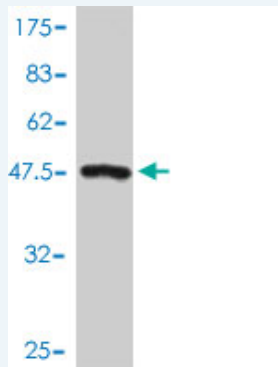
規格 : [100 ug]

[List All](#)

Specification

Product Description:	Mouse monoclonal antibody raised against a full length recombinant MPHOSPH6.
Immunogen:	MPHOSPH6 (AAH05242, 1 a.a. ~ 160 a.a) full-length recombinant protein with GST tag. MW of the GST tag alone is 26 KDa.
Sequence:	MAAERKTKLSKNLLRMKFMQRGLDSETKKQLEEEKKIIEEHWYLDLPE LKEKESFIIIEEQSFLLCEDLLYGRMSFRGFNPEVEKMLQMNAKHKAEEV EDEVELDVSDDEEMARRYETLVGTIGKKFARKRDHANYEEDENGDITPIK AKKMFLKPQD
Host:	Mouse
Reactivity:	Human
Isotype:	IgG1 kappa

Quality Control Testing: Antibody Reactive Against Recombinant Protein.



Western Blot detection against Immunogen (43.34 KDa) .

Storage Buffer: In 1x PBS, pH 7.4

Storage Instruction: Store at -20°C or lower. Aliquot to avoid repeated freezing and thawing.

MSDS: [Download](#)

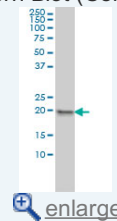
Datasheet: [Download](#)

Applications

Western Blot (Cell lysate)

Application Image

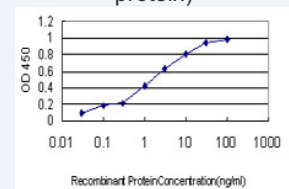
Western Blot (Cell lysate)



[enlarge](#)

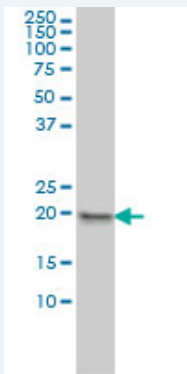
Western Blot (Recombinant protein)

Sandwich ELISA (Recombinant protein)



[enlarge](#)

ELISA



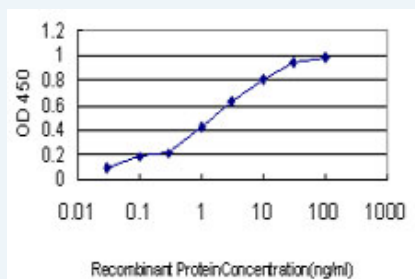
MPHOSPH6 monoclonal antibody (M01), clone 1D8-2A8 Western Blot analysis of MPHOSPH6 expression in HeLa (Cat # L013V1).

[Protocol Download](#)

Western Blot (Recombinant protein)

[Protocol Download](#)

Sandwich ELISA (Recombinant protein)



Detection limit for recombinant GST tagged MPHOSPH6 is approximately 0.1ng/ml as a capture antibody.

[Protocol Download](#)

ELISA

Gene Information

Entrez GeneID: [10200](#)

GeneBank [BC005242](#)

Accession#:

Protein [AAH05242](#)

Accession#:

Gene Name: MPHOSPH6

Gene Alias: MPP, MPP-6, MPP6

Gene Description: M-phase phosphoprotein 6

Omim ID: [605500](#)

Gene Ontology: [Hyperlink](#)

Other Designations: -

Gene Pathway

[RNA degradation](#)

Related Disease

[服務條款](#) | [隱私權政策](#) | [著作及商標](#) | [網站地圖](#)

©2016 亞諾法生技股份有限公司 Abnova Corporation. 版權所有.