



# SZABO SCANDIC

Part of Europa Biosite

## Produktinformation



Forschungsprodukte & Biochemikalien



Zellkultur & Verbrauchsmaterial



Diagnostik & molekulare Diagnostik



Laborgeräte & Service

Weitere Information auf den folgenden Seiten!  
See the following pages for more information!



### Lieferung & Zahlungsart

siehe unsere [Liefer- und Versandbedingungen](#)

### Zuschläge

- Mindermengenzuschlag
- Trockeneiszuschlag
- Gefahrgutzuschlag
- Expressversand

### SZABO-SCANDIC HandelsgmbH

Quellenstraße 110, A-1100 Wien

T. +43(0)1 489 3961-0

F. +43(0)1 489 3961-7

[mail@szabo-scandic.com](mailto:mail@szabo-scandic.com)

[www.szabo-scandic.com](http://www.szabo-scandic.com)

[linkedin.com/company/szaboscandic](https://www.linkedin.com/company/szaboscandic)

## MPHOSPH6 monoclonal antibody (M12), clone 3G8-2F5

Catalog # : H00010200-M12

規格 : [ 100 ug ]

[List All](#)

### Specification

**Product Description:** Mouse monoclonal antibody raised against a full-length recombinant MPHOSPH6.

**Immunogen:** MPHOSPH6 (AAH05242, 1 a.a. ~ 160 a.a) full-length recombinant protein with GST tag. MW of the GST tag alone is 26 KDa.

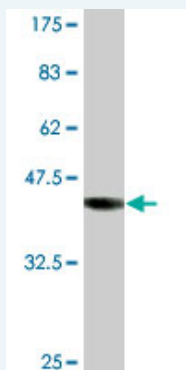
**Sequence:** MAAERKTKLSKNLLRMKFMQRGLDSETKKQLEEEEEKKIIEEHWYLDLPE  
LKEKESFIIIEEQSFLLCEDLLYGRMSFRGFNPEVEKMLQMNAKHKAEVV  
EDETVELDVSDEEMARRYETLVGTIGKKFARKRDHANYEEDENGDITPIK  
AKKMFLKPQD

**Host:** Mouse

**Reactivity:** Human

**Isotype:** IgG1 Kappa

**Quality Control Testing:** Antibody Reactive Against Recombinant Protein.



Western Blot detection against Immunogen (43.34 KDa) .

**Storage Buffer:** In 1x PBS, pH 7.4

**Storage Instruction:** Store at -20°C or lower. Aliquot to avoid repeated freezing and thawing.

**MSDS:** [Download](#)

**Datasheet:** [Download](#)

### Applications

**Western Blot (Recombinant protein)**

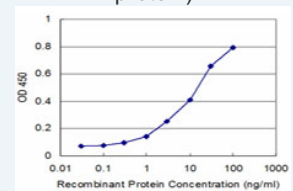
[Protocol Download](#)

**Sandwich ELISA (Recombinant protein)**

### Application Image

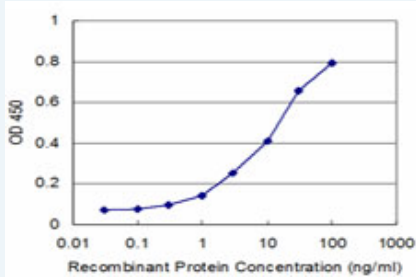
Western Blot (Recombinant protein)

Sandwich ELISA (Recombinant protein)



[enlarge](#)

ELISA



Detection limit for recombinant GST tagged MPHOSPH6 is approximately 1ng/ml as a capture antibody.

 [Protocol Download](#)

## ELISA

### Gene Information

Entrez GeneID: [10200](#)

GeneBank [BC005242](#)

Accession#:

Protein [AAH05242](#)

Accession#:

Gene Name: MPHOSPH6

Gene Alias: MPP, MPP-6, MPP6

Gene Description: M-phase phosphoprotein 6

Omim ID: [605500](#)

Gene Ontology: [Hyperlink](#)

Other Designations: -

### Gene Pathway

[RNA degradation](#)

### Related Disease

[Disease Progression](#) [Disease Susceptibility](#) [HIV Infections](#) [Tobacco Use Disorder](#)