



SZABO SCANDIC

Part of Europa Biosite

Produktinformation



Forschungsprodukte & Biochemikalien



Zellkultur & Verbrauchsmaterial



Diagnostik & molekulare Diagnostik



Laborgeräte & Service

Weitere Information auf den folgenden Seiten!
See the following pages for more information!



Lieferung & Zahlungsart

siehe unsere [Liefer- und Versandbedingungen](#)

Zuschläge

- Mindermengenzuschlag
- Trockeneiszuschlag
- Gefahrgutzuschlag
- Expressversand

SZABO-SCANDIC HandelsgmbH

Quellenstraße 110, A-1100 Wien

T. +43(0)1 489 3961-0

F. +43(0)1 489 3961-7

mail@szabo-scandic.com

www.szabo-scandic.com

[linkedin.com/company/szaboscandic](https://www.linkedin.com/company/szaboscandic) 

NME6 monoclonal antibody (M07), clone 2A10

Catalog # : H00010201-M07

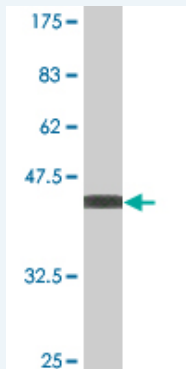
規格 : [100 ug]

[List All](#)

Specification

Product Description:	Mouse monoclonal antibody raised against a full-length recombinant NME6.
Immunogen:	NME6 (AAH01808, 1 a.a. ~ 194 a.a) full-length recombinant protein with GST tag. MW of the GST tag alone is 26 KDa.
Sequence:	MTQNLGSEMASILRSPQALQLTLALIKPDAVAHPLILEAVHQQILSNKFLIV RMRELLWRKEDCQRFYREHEGRFFYQRLVEFMASGPIRAYILAHKDAIQ LWRTLMPTRVFRARHVAPDSIRGSFGLTDTTRNTTHGSDSVVSASREIA AFFPDFSEQRWYEEEEPQLRCGPVCYSPEGGVHYVAGTGGLGPA
Host:	Mouse
Reactivity:	Human
Isotype:	IgG2a Kappa

Quality Control Testing: Antibody Reactive Against Recombinant Protein.



Western Blot detection against Immunogen (47.08 KDa) .

Storage Buffer: In 1x PBS, pH 7.4

Storage Instruction: Store at -20°C or lower. Aliquot to avoid repeated freezing and thawing.

MSDS: [Download](#)

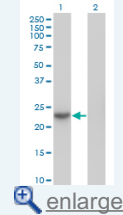
Datasheet: [Download](#)

Applications

Western Blot (Transfected lysate)

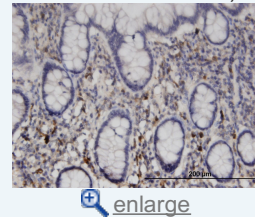
Application Image

Western Blot (Transfected lysate)

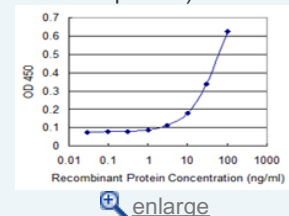


Western Blot (Recombinant protein)

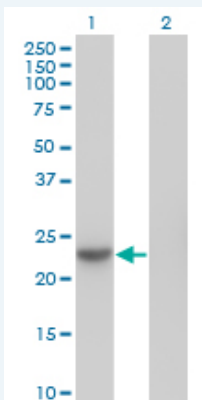
Immunohistochemistry (Formalin/PFA-fixed paraffin-embedded sections)



Sandwich ELISA (Recombinant protein)



ELISA



Western Blot analysis of NME6 expression in transfected 293T cell line by NME6 monoclonal antibody (M07), clone 2A10.

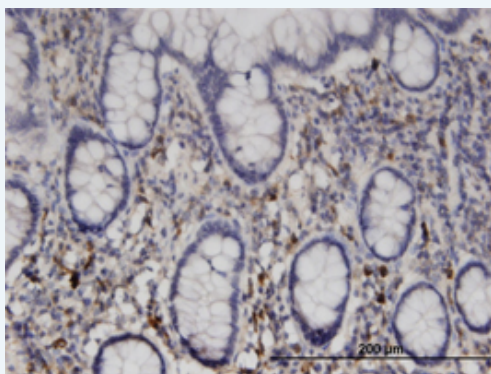
Lane 1: NME6 transfected lysate(22 KDa).
Lane 2: Non-transfected lysate.

[Protocol Download](#)

Western Blot (Recombinant protein)

[Protocol Download](#)

Immunohistochemistry (Formalin/PFA-fixed paraffin-embedded sections)

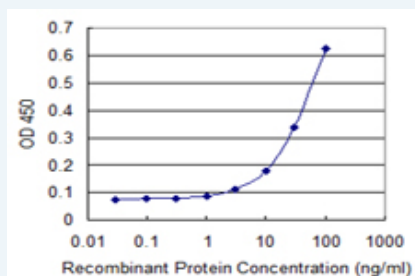


[enlarge this image](#)

Immunoperoxidase of monoclonal antibody to NME6 on formalin-fixed paraffin-embedded human small Intestine. [antibody concentration 3 ug/ml]

[Protocol Download](#)

Sandwich ELISA (Recombinant protein)



Detection limit for recombinant GST tagged NME6 is 1 ng/ml as a capture antibody.

[Protocol Download](#)

ELISA

Gene Information

Entrez GeneID: [10201](#)

GeneBank [BC001808](#)

Accession#:

Protein [AAH01808](#)

Accession#:

Gene Name: NME6

Gene Alias: IPIA-ALPHA,NM23-H6

Gene Description: non-metastatic cells 6, protein expressed in (nucleoside-diphosphate kinase)

Omim ID: [608294](#)

Gene Ontology: [Hyperlink](#)

Gene Summary: The nucleoside diphosphate (NDP) kinases (EC 2.7.4.6) are ubiquitous enzymes that catalyze transfer of gamma-phosphates, via a phosphohistidine intermediate, between nucleoside and dioxynucleoside tri- and diphosphates. The enzymes are products of the NM23 gene family (see MIM 156490).[supplied by OMIM]

Other Designations: inhibitor of p53-induced apoptosis-alpha,nucleoside diphosphate kinase type 6

Gene Pathway

[Metabolic pathways](#) [Purine metabolism](#) [Pyrimidine metabolism](#)

[服務條款](#) | [隱私權政策](#) | [著作及商標](#) | [網站地圖](#)

©2016 亞諾法生技股份有限公司 Abnova Corporation. 版權所有.