



# SZABO SCANDIC

Part of Europa Biosite

## Produktinformation



Forschungsprodukte & Biochemikalien



Zellkultur & Verbrauchsmaterial



Diagnostik & molekulare Diagnostik



Laborgeräte & Service

Weitere Information auf den folgenden Seiten!  
See the following pages for more information!



### Lieferung & Zahlungsart

siehe unsere [Liefer- und Versandbedingungen](#)

### Zuschläge

- Mindermengenzuschlag
- Trockeneiszuschlag
- Gefahrgutzuschlag
- Expressversand

### SZABO-SCANDIC HandelsgmbH

Quellenstraße 110, A-1100 Wien

T. +43(0)1 489 3961-0

F. +43(0)1 489 3961-7

[mail@szabo-scandic.com](mailto:mail@szabo-scandic.com)

[www.szabo-scandic.com](http://www.szabo-scandic.com)

[linkedin.com/company/szaboscandic](https://www.linkedin.com/company/szaboscandic) 

## CALCRL polyclonal antibody (A01)

Catalog # : H00010203-A01

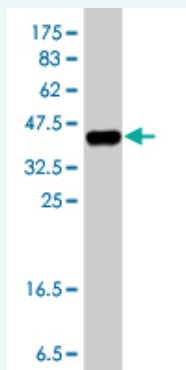
規格 : [ 50 uL ]

List All

### Specification

<b>Product Description:</b>	Mouse polyclonal antibody raised against a partial recombinant CALCRL.
<b>Immunogen:</b>	CALCRL (NP_005786, 23 a.a. ~ 132 a.a) partial recombinant protein with GST tag.
<b>Sequence:</b>	ELEESPEDSIQLGVTRNKIMTAQYECYQKIMQDPIQQAEGVYCNRTWDG WLCWNDVAAGTESMQLCPDYFQDFDPSEKVTKICDQDGNWFRHPASN RTWTNYTQCNVNTH
<b>Host:</b>	Mouse
<b>Reactivity:</b>	Human

**Quality Control Testing:** Antibody Reactive Against Recombinant Protein.



Western Blot detection against Immunogen (38.21 kDa) .

**Storage Buffer:** 50 % glycerol

**Storage Instruction:** Store at -20°C or lower. Aliquot to avoid repeated freezing and thawing.

**MSDS:** [Download](#)

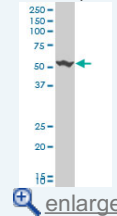
**Datasheet:** [Download](#)

### Applications

Western Blot (Cell lysate)

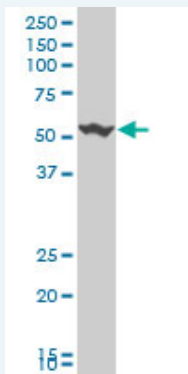
### Application Image

Western Blot (Cell lysate)



Western Blot (Recombinant protein)

ELISA



CALCRL polyclonal antibody (A01), Lot # UHK2060109QCS1 Western Blot analysis of CALCRL expression in MCF-7 ( Cat # L046V1 ).

 [Protocol Download](#)

---

#### Western Blot (Recombinant protein)

 [Protocol Download](#)

---

#### ELISA

---

#### Gene Information

**Entrez GeneID:** [10203](#)

**GeneBank Accession#:** [NM\\_005795](#)

**Protein Accession#:** [NP\\_005786](#)

**Gene Name:** CALCRL

**Gene Alias:** CGRPR,CRLR

**Gene Description:** calcitonin receptor-like

**Omim ID:** [114190](#)

**Gene Ontology:** [Hyperlink](#)

**Other Designations:** -

---

#### Gene Pathway

[Neuroactive ligand-receptor interaction](#) [Vascular smooth muscle contraction](#)

---

#### Related Disease

[Arthritis, Rheumatoid](#) [Asperger Syndrome](#) [Autistic Disorder](#)  
[Genetic Predisposition to Disease](#) [Glaucoma, Angle-Closure](#)  
[Hyperparathyroidism, Secondary](#) [Hypertension](#) [Social Perception](#) [Tobacco Use Disorder](#)