



SZABO SCANDIC

Part of Europa Biosite

Produktinformation



Forschungsprodukte & Biochemikalien



Zellkultur & Verbrauchsmaterial



Diagnostik & molekulare Diagnostik



Laborgeräte & Service

Weitere Information auf den folgenden Seiten!
See the following pages for more information!



Lieferung & Zahlungsart

siehe unsere [Liefer- und Versandbedingungen](#)

Zuschläge

- Mindermengenzuschlag
- Trockeneiszuschlag
- Gefahrgutzuschlag
- Expressversand

SZABO-SCANDIC HandelsgmbH

Quellenstraße 110, A-1100 Wien

T. +43(0)1 489 3961-0

F. +43(0)1 489 3961-7

mail@szabo-scandic.com

www.szabo-scandic.com

[linkedin.com/company/szaboscandic](https://www.linkedin.com/company/szaboscandic) 

CALCRL 293T Cell Transient Overexpression Lysate(Denatured)

Catalog # : H00010203-T02

規格 : [100 uL]

[List All](#)

Specification

Transfected Cell Line: 293T

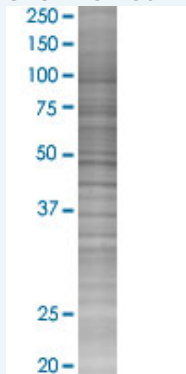
Plasmid: pCMV-CALCRL full-length

Host: Human

Theoretical MW (kDa): 53

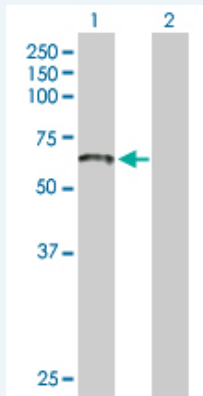
Quality Control Testing: Transient overexpression cell lysate was tested with Anti-CALCRL antibody (H00010203-B01) by Western Blots.

SDS-PAGE Gel



CALCRL transfected lysate.

Western Blot



Lane 1: CALCRL transfected lysate (53.00 KDa)

Lane 2: Non-transfected lysate.

Storage Buffer: 1X Sample Buffer (50 mM Tris-HCl, 2% SDS, 10% glycerol, 300 mM 2-mercaptoethanol, 0.01% Bromophenol blue)

Storage Instruction: Store at -80°C. Aliquot to avoid repeated freezing and thawing.

MSDS:  [Download](#)

Applications

Application Image

Western Blot

Western Blot

Gene Information

Entrez GeneID: [10203](#)

GeneBank Accession#: [NM_005795](#)

Protein Accession#: [NP_005786.1](#)

Gene Name: [CALCRL](#)

Gene Alias: [CGRPR,CRLR](#)

Gene Description: [calcitonin receptor-like](#)

Omim ID: [114190](#)

Gene Ontology: [Hyperlink](#)

Other Designations: -

Gene Pathway

[Neuroactive ligand-receptor interaction](#) [Vascular smooth muscle contraction](#)

Related Disease

[Arthritis, Rheumatoid](#) [Asperger Syndrome](#) [Autistic Disorder](#)
[Genetic Predisposition to Disease](#) [Glaucoma, Angle-Closure](#)
[Hyperparathyroidism](#) [Secondary Hypertension](#) [Social Perception](#) [Tobacco Use Disorder](#)