



# SZABO SCANDIC

Part of Europa Biosite

## Produktinformation



Forschungsprodukte & Biochemikalien



Zellkultur & Verbrauchsmaterial



Diagnostik & molekulare Diagnostik



Laborgeräte & Service

Weitere Information auf den folgenden Seiten!  
See the following pages for more information!



### Lieferung & Zahlungsart

siehe unsere [Liefer- und Versandbedingungen](#)

### Zuschläge

- Mindermengenzuschlag
- Trockeneiszuschlag
- Gefahrgutzuschlag
- Expressversand

### SZABO-SCANDIC HandelsgmbH

Quellenstraße 110, A-1100 Wien

T. +43(0)1 489 3961-0

F. +43(0)1 489 3961-7

[mail@szabo-scandic.com](mailto:mail@szabo-scandic.com)

[www.szabo-scandic.com](http://www.szabo-scandic.com)

[linkedin.com/company/szaboscandic](https://www.linkedin.com/company/szaboscandic) 

## TOPORS monoclonal antibody (M15), clone 6D2

Catalog # : H00010210-M15

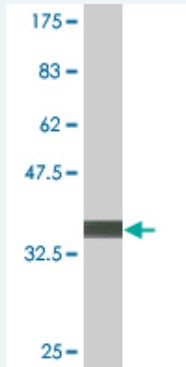
規格 : [ 100 ug ]

[List All](#)

### Specification

<b>Product Description:</b>	Mouse monoclonal antibody raised against a partial recombinant TOPORS.
<b>Immunogen:</b>	TOPORS (NP_005793, 98 a.a. ~ 205 a.a) partial recombinant protein with GST tag. MW of the GST tag alone is 26 KDa.
<b>Sequence:</b>	SPDSKCPICLDRFDNVSYLDRCLHKFCFRCVQEWSKNKAECPLCKQPF DSIFHSVRAEDDFKEYVLRPSYNGSFVTPDRRFYRRTLTRERNASVYS PSGPVNRRTT
<b>Host:</b>	Mouse
<b>Reactivity:</b>	Human
<b>Isotype:</b>	IgG2a Kappa

**Quality Control Testing:** Antibody Reactive Against Recombinant Protein.



Western Blot detection against Immunogen (37.62 KDa) .

**Storage Buffer:** In 1x PBS, pH 7.4

**Storage Instruction:** Store at -20°C or lower. Aliquot to avoid repeated freezing and thawing.

**MSDS:** [Download](#)

**Datasheet:** [Download](#)

### Applications

**Western Blot (Recombinant protein)**

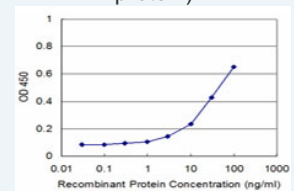
[Protocol Download](#)

**Sandwich ELISA (Recombinant protein)**

### Application Image

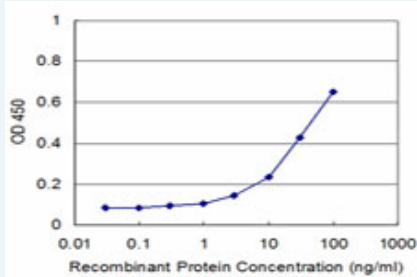
Western Blot (Recombinant protein)

Sandwich ELISA (Recombinant protein)



[enlarge](#)

ELISA



Detection limit for recombinant GST tagged TOPORS is approximately 3ng/ml as a capture antibody.

 [Protocol Download](#)

## ELISA

### Gene Information

Entrez GeneID: [10210](#)

GeneBank [NM\\_005802](#)

Accession#:

Protein [NP\\_005793](#)

Accession#:

Gene Name: TOPORS

Gene Alias: LUN,P53BP3,RP31,TP53BPL

Gene Description: topoisomerase I binding, arginine/serine-rich

Omim ID: [609507](#), [609923](#)

Gene Ontology: [Hyperlink](#)

Other Designations: OTTHUMP00000021182,OTTHUMP00000021184,OTTHUMP000000045 227,retinitis pigmentosa 31 (autosomal dominant),topoisomerase I binding protein,tumor protein p53-binding protein

### Related Disease

[Retinitis Pigmentosa](#) [Tobacco Use Disorder](#)

[服務條款](#) | [隱私權政策](#) | [著作及商標](#) | [網站地圖](#)

©2016 亞諾法生技股份有限公司 Abnova Corporation. 版權所有.