



# SZABO SCANDIC

Part of Europa Biosite

## Produktinformation



Forschungsprodukte & Biochemikalien



Zellkultur & Verbrauchsmaterial



Diagnostik & molekulare Diagnostik



Laborgeräte & Service

Weitere Information auf den folgenden Seiten!  
See the following pages for more information!



### Lieferung & Zahlungsart

siehe unsere [Liefer- und Versandbedingungen](#)

### Zuschläge

- Mindermengenzuschlag
- Trockeneiszuschlag
- Gefahrgutzuschlag
- Expressversand

### SZABO-SCANDIC HandelsgmbH

Quellenstraße 110, A-1100 Wien

T. +43(0)1 489 3961-0

F. +43(0)1 489 3961-7

[mail@szabo-scandic.com](mailto:mail@szabo-scandic.com)

[www.szabo-scandic.com](http://www.szabo-scandic.com)

[linkedin.com/company/szaboscandic](https://www.linkedin.com/company/szaboscandic) 

## PSMD14 MaxPab mouse polyclonal antibody (B02) MaxPab®

Catalog # : H00010213-B02

規格 : [ 50 uL ]

[List All](#)

### Specification

**Product Description:** Mouse polyclonal antibody raised against a full-length human PSMD14 protein.

**Immunogen:** PSMD14 (NP\_005796.1, 1 a.a. ~ 310 a.a) full-length human protein.

**Sequence:**  
 MDRLRLGGGMPGLGQGPPTDAPAVDTAEQVYISSLALLKMLKHGRAG  
 VPMEVMGLMLGEFVDDYTVRVIDVFAMPQSGTGVSVEAVDPVFQAKML  
 DMLKQTRPEMVGWYHSHPGFGCWLSGVDINTQQSFEALSERAVAV  
 VVDPIQSVKGVVIDAFRLINANMMVLGHEPRQTTSNLGHNLKPSIQALIH  
 GLNRHYYSITINYRKNELEQKMLLNHKKSWMEGLTLQDYSEHCKHNESV  
 VKEMLELAKNYNKAVEEEDKMTPEQLAIKNVKGQDKRHL EEHV DVLMT  
 SNIVQCLAAMLDTVVK

**Host:** Mouse

**Reactivity:** Human

**Quality Control Testing:** Antibody reactive against mammalian transfected lysate.

**Storage Buffer:** No additive

**Storage Instruction:** Store at -20°C or lower. Aliquot to avoid repeated freezing and thawing.

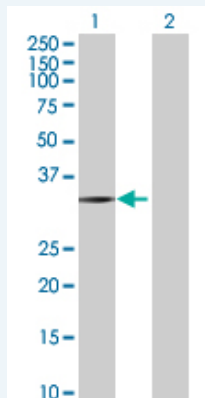
**Note:** For IHC and IF applications, antibody purification with Protein A will be needed prior to use.

**MSDS:**  [Download](#)

**Datasheet:**  [Download](#)

### Applications

#### Western Blot (Transfected lysate)

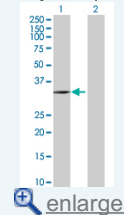


Western Blot analysis of PSMD14 expression in transfected 293T cell line (H00010213-T02) by PSMD14 MaxPab polyclonal antibody.

Lane 1: PSMD14 transfected lysate(34.1 KDa).  
 Lane 2: Non-transfected lysate.

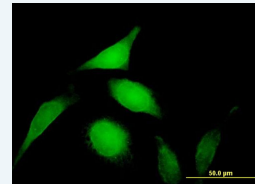
### Application Image

#### Western Blot (Transfected lysate)



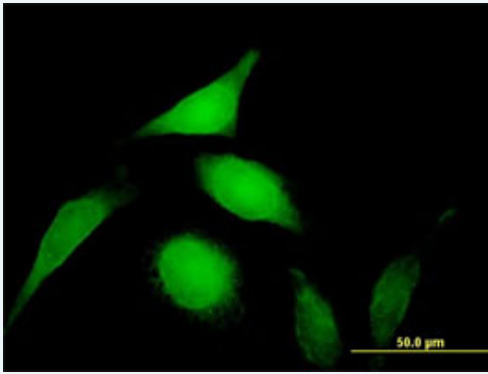
 [enlarge](#)


#### Immunofluorescence



 [enlarge](#)

## Immunofluorescence



 enlarge this image

Immunofluorescence of purified MaxPab antibody to PSMD14 on HeLa cell. [antibody concentration 10 ug/ml]

## Gene Information

**Entrez GeneID:** [10213](#)

**GeneBank Accession#:** [NM\\_005805.2](#)

**Protein Accession#:** [NP\\_005796.1](#)

**Gene Name:** PSMD14

**Gene Alias:** PAD1,POH1,rpn11

**Gene Description:** proteasome (prosome, macropain) 26S subunit, non-ATPase, 14

**Omim ID:** [607173](#)

**Gene Ontology:** [Hyperlink](#)

**Gene Summary:** PSMD14 is a component of the 26S proteasome, a multiprotein complex that degrades proteins targeted for destruction by the ubiquitin pathway (Spataro et al., 1997 [PubMed 9374539]).[supplied by OMIM]

**Other Designations:** 26S proteasome-associated pad1 homolog

## Gene Pathway

[Proteasome](#)