



# SZABO SCANDIC

Part of Europa Biosite

## Produktinformation



Forschungsprodukte & Biochemikalien



Zellkultur & Verbrauchsmaterial



Diagnostik & molekulare Diagnostik



Laborgeräte & Service

Weitere Information auf den folgenden Seiten!  
See the following pages for more information!



### Lieferung & Zahlungsart

siehe unsere [Liefer- und Versandbedingungen](#)

### Zuschläge

- Mindermengenzuschlag
- Trockeneiszuschlag
- Gefahrgutzuschlag
- Expressversand

### SZABO-SCANDIC HandelsgmbH

Quellenstraße 110, A-1100 Wien

T. +43(0)1 489 3961-0

F. +43(0)1 489 3961-7

[mail@szabo-scandic.com](mailto:mail@szabo-scandic.com)

[www.szabo-scandic.com](http://www.szabo-scandic.com)

[linkedin.com/company/szaboscandic](https://www.linkedin.com/company/szaboscandic) 

## PSMD14 monoclonal antibody (M01), clone 4A10-E8

Catalog # : H00010213-M01

規格 : [ 100 ug ]

[List All](#)

### Specification

<b>Product Description:</b>	Mouse monoclonal antibody raised against a full length recombinant PSMD14.
<b>Immunogen:</b>	PSMD14 (AAH09524.1, 1 a.a. ~ 95 a.a) full-length recombinant protein with GST tag. MW of the GST tag alone is 26 KDa.
<b>Sequence:</b>	MLLNLHKKSWMEGLTLQDYSEHCKHNESVVKEMLELAKNYNKAVEEEDK MTPEQLAIKNVKGQDPKRHLEEHVDVLTMTSNIVQCLAAMLDTVVFK
<b>Host:</b>	Mouse
<b>Reactivity:</b>	Human
<b>Isotype:</b>	IgG1 Kappa
<b>Quality Control Testing:</b>	Antibody Reactive Against Recombinant Protein.
<b>Storage Buffer:</b>	In 1x PBS, pH 7.4

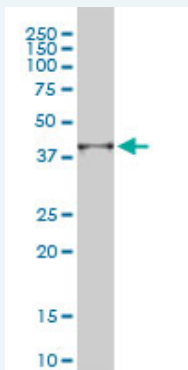
**Storage Instruction:** Store at -20°C or lower. Aliquot to avoid repeated freezing and thawing.

**MSDS:** [Download](#)

**Datasheet:** [Download](#)

### Applications

#### Western Blot (Cell lysate)



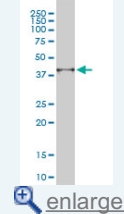
PSMD14 monoclonal antibody (M01), clone 4A10-E8 Western Blot analysis of PSMD14 expression in A-431 ( Cat # L015V1 ).

[Protocol Download](#)

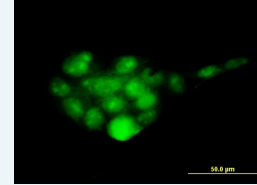
#### Immunofluorescence

### Application Image

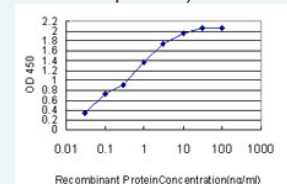
#### Western Blot (Cell lysate)



#### Immunofluorescence

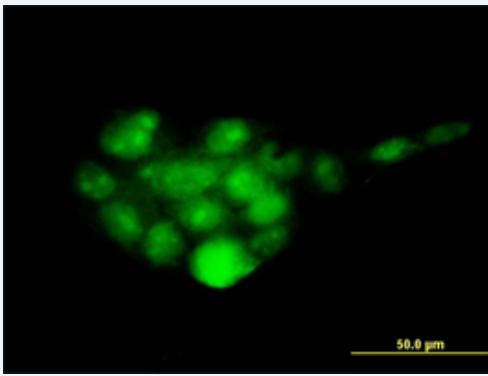


#### Sandwich ELISA (Recombinant protein)



[enlarge](#)

ELISA

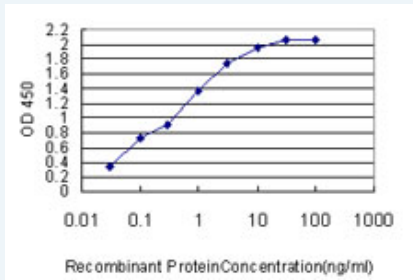


[enlarge this image](#)

Immunofluorescence of monoclonal antibody to PSMD14 on A-431 cell. [antibody concentration 25 ug/ml]

[Protocol Download](#)

### Sandwich ELISA (Recombinant protein)



Detection limit for recombinant GST tagged PSMD14 is approximately 0.03ng/ml as a capture antibody.

[Protocol Download](#)

### ELISA

#### Gene Information

Entrez GeneID: [10213](#)

GeneBank Accession#: [BC009524](#)

Protein Accession#: [AAH09524.1](#)

Gene Name: PSMD14

Gene Alias: PAD1,POH1,rpn11

Gene Description: proteasome (prosome, macropain) 26S subunit, non-ATPase, 14

Omim ID: [607173](#)

Gene Ontology: [Hyperlink](#)

Gene Summary: PSMD14 is a component of the 26S proteasome, a multiprotein complex that degrades proteins targeted for destruction by the ubiquitin pathway (Spataro et al., 1997 [PubMed 9374539]).[supplied by OMIM]

Other Designations: 26S proteasome-associated pad1 homolog

#### Gene Pathway

[Proteasome](#)

