



# SZABO SCANDIC

Part of Europa Biosite

## Produktinformation



Forschungsprodukte & Biochemikalien



Zellkultur & Verbrauchsmaterial



Diagnostik & molekulare Diagnostik



Laborgeräte & Service

Weitere Information auf den folgenden Seiten!  
See the following pages for more information!



### Lieferung & Zahlungsart

siehe unsere [Liefer- und Versandbedingungen](#)

### Zuschläge

- Mindermengenzuschlag
- Trockeneiszuschlag
- Gefahrgutzuschlag
- Expressversand

### SZABO-SCANDIC HandelsgmbH

Quellenstraße 110, A-1100 Wien

T. +43(0)1 489 3961-0

F. +43(0)1 489 3961-7

[mail@szabo-scandic.com](mailto:mail@szabo-scandic.com)

[www.szabo-scandic.com](http://www.szabo-scandic.com)

[linkedin.com/company/szaboscandic](https://www.linkedin.com/company/szaboscandic) 

## KLRG1 polyclonal antibody (A01)

Catalog # : H00010219-A01

規格 : [ 50 uL ]

List All

### Specification

**Product Description:** Mouse polyclonal antibody raised against a partial recombinant KLRG1.

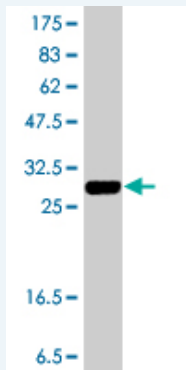
**Immunogen:** KLRG1 (NP\_005801, 57 a.a. ~ 119 a.a) partial recombinant protein with GST tag.

**Sequence:** QWILCQGSNYSTCASCPCPDRWMKYGNHCYYFSVEEKDWNSLEFC  
LARDSHLLVITDNQEM

**Host:** Mouse

**Reactivity:** Human

**Quality Control Testing:** Antibody Reactive Against Recombinant Protein.



Western Blot detection against Immunogen (33.04 KDa) .

**Storage Buffer:** 50 % glycerol

**Storage Instruction:** Store at -20°C or lower. Aliquot to avoid repeated freezing and thawing.

**MSDS:** [Download](#)

**Datasheet:** [Download](#)

### Publication Reference

1. [Cell-to-Cell Contact with Hepatitis C Virus-Infected Cells Reduces Functional Capacity of Natural Killer Cells.](#)  
Yoon JC, Lim JB, Park JH, Lee JM. J Virol. 2011 Sep 21. [Epub ahead of print]

### Applications

**Western Blot (Recombinant protein)**

[Protocol Download](#)

**ELISA**

### Gene Information

### Application Image

Western Blot (Recombinant protein)

ELISA

**Entrez GeneID:** [10219](#)

**GeneBank  
Accession#:** [NM\\_005810](#)

**Protein  
Accession#:** [NP\\_005801](#)

**Gene Name:** KLRG1

**Gene Alias:** 2F1,CLEC15A,MAFA,MAFA-2F1,MAFA-L,MAFA-LIKE,MGC13600

**Gene  
Description:** killer cell lectin-like receptor subfamily G, member 1

**Omim ID:** [604874](#)

**Gene Ontology:** [Hyperlink](#)

**Gene Summary:** Natural killer (NK) cells are lymphocytes that can mediate lysis of certain tumor cells and virus-infected cells without previous activation. They can also regulate specific humoral and cell-mediated immunity. The protein encoded by this gene belongs to the killer cell lectin-like receptor (KLR) family, which is a group of transmembrane proteins preferentially expressed in NK cells. Studies in mice suggested that the expression of this gene may be regulated by MHC class I molecules. Alternatively spliced transcript variants have been reported, but their full-length natures have not yet been determined. [provided by RefSeq]

**Other  
Designations:** C-type lectin domain family 15, member A,mast cell function-associated antigen (ITIM-containing)

#### **Related Disease**

[Tobacco Use Disorder](#)

[服務條款](#) | [隱私權政策](#) | [著作及商標](#) | [網站地圖](#)

©2016 亞諾法生技股份有限公司 Abnova Corporation. 版權所有.